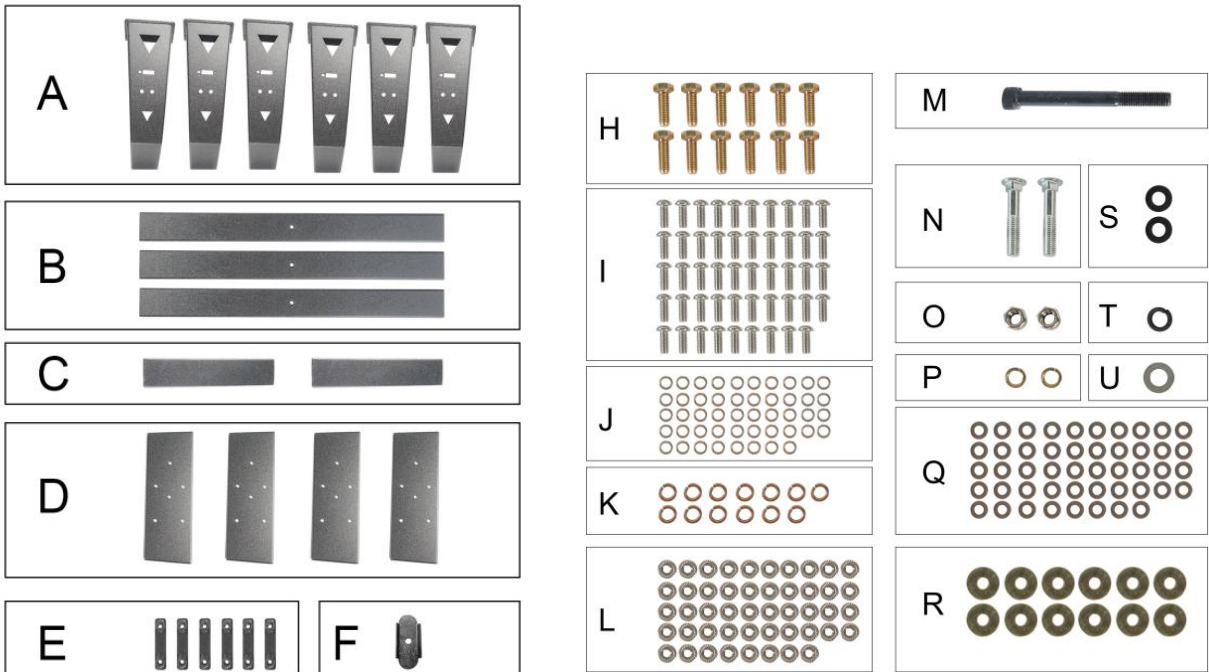


Tacoma Bed Rack

TT6616

(1) Contents:



(2) Tools required:

A. 12mm Wrench;

B. 5mm Hex Socket Wrench;

C. 19mm Socket Wrench;



(3) Installation time: About 1.5 hours, 2-3 persons needed.

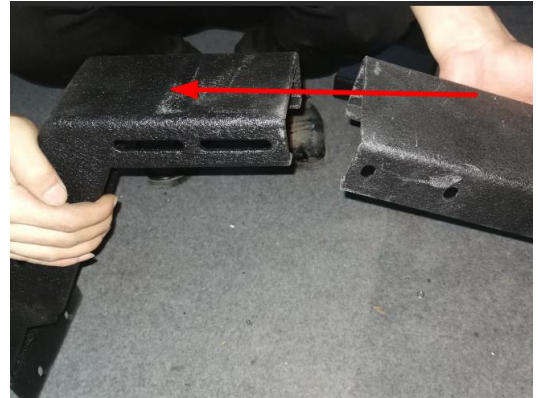
(Installation time is different according to individual person)

(4) Installation instruction:

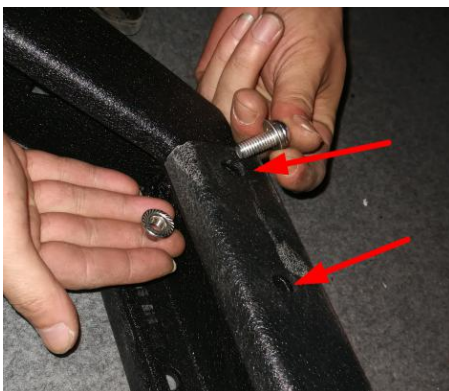
Step 1:

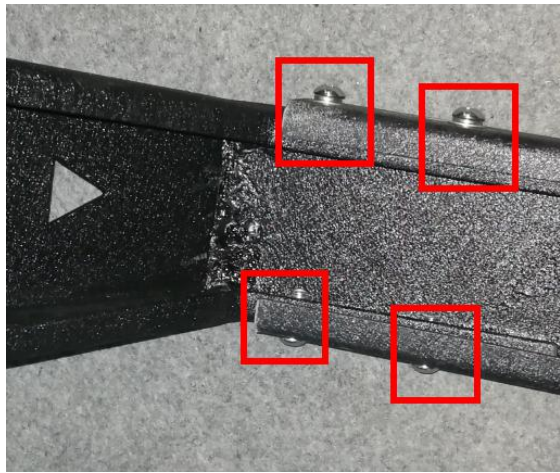
Install the PART "A" & PART "B" with PART "I", PART "J", PART "Q", PART "L". As shown below.

(1) Install the PART "A" & PART "B".



(2) Tighten it with PART "I", PART "J", PART "Q", PART "L".





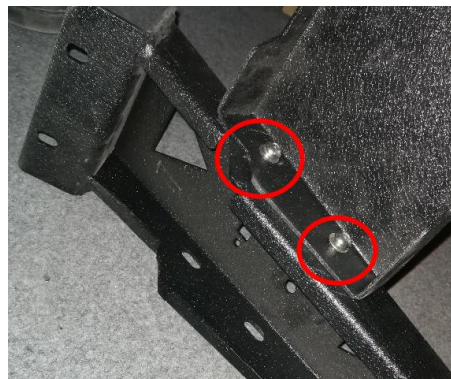
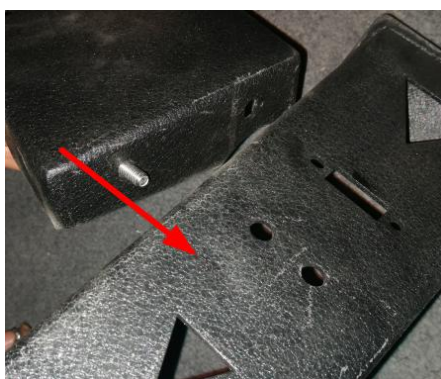
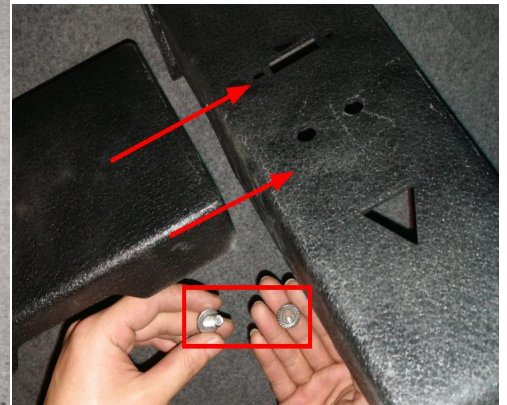
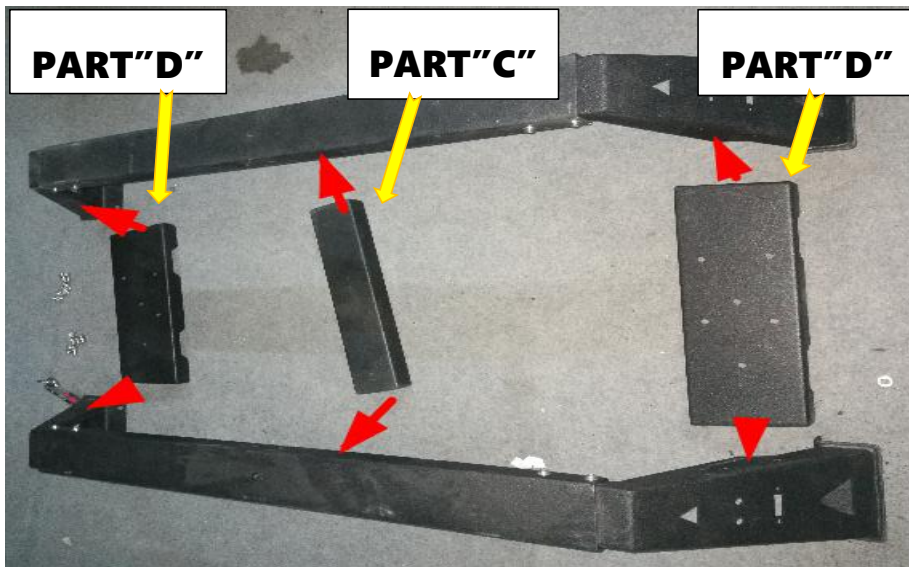
Step 2:

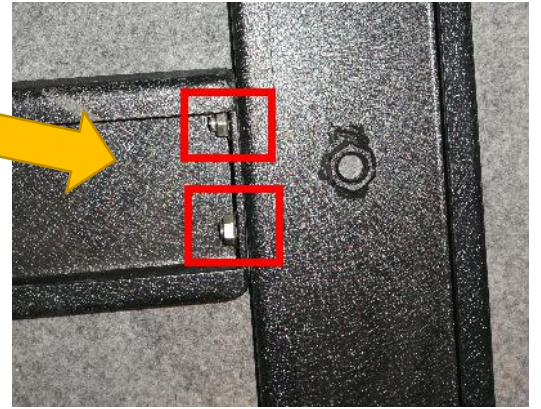
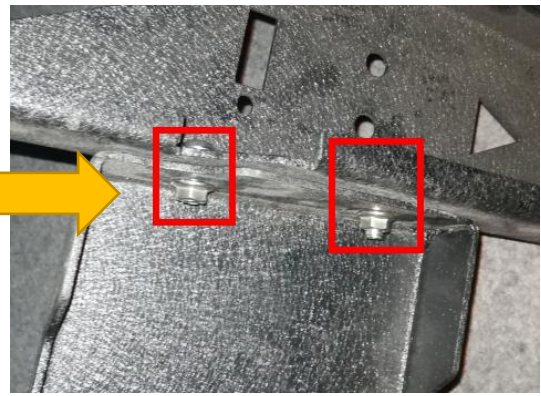
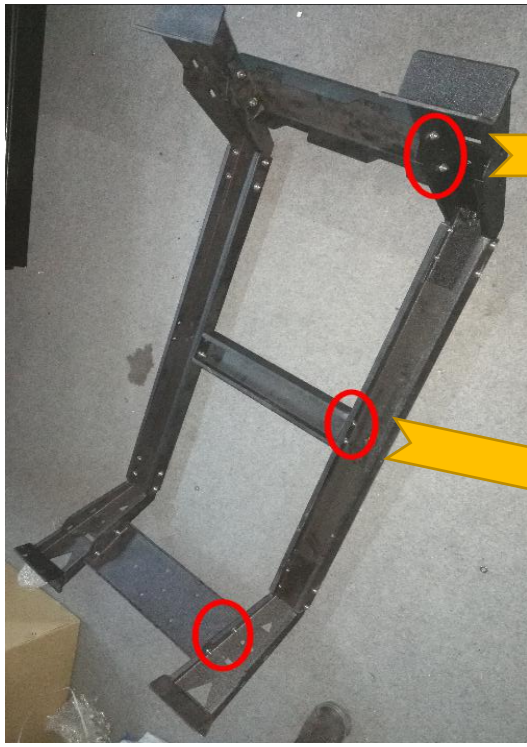
Install the PART "A" & PART "B" again. Then we got 3 of PART "A" & PART "B".



Step 3:

Install the PART "C" & PART "D" on the PART "A" & PART "B" with PART "I", PART "J", PART "Q", PART "L". And tighten it by the wrench.





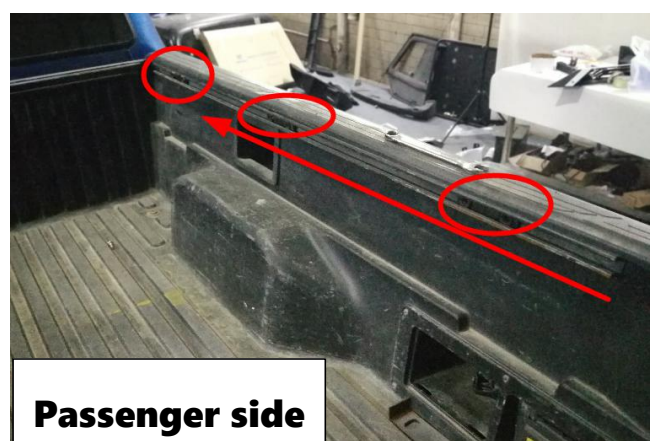
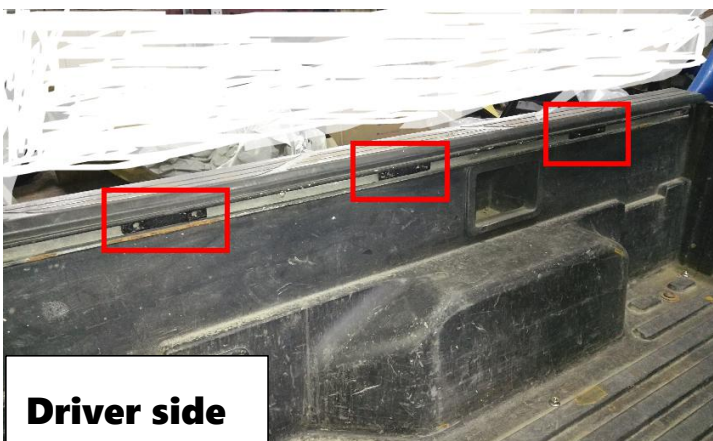
Step 4:

Repeat "Step 3" to install the another PART "C" & PART "D" on the PART "A" & PART "B".As shown below.



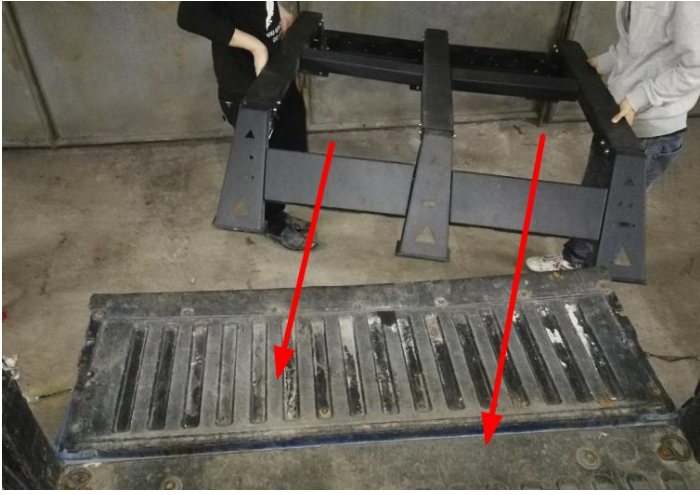
Step 5:

Install the PART "E" on the vehicle. Both side is the same. As shown below.



Step 6:

After "Step 5", then install the Bed Rack on the vehicle.



Attention 1:

**Install the Bed Rack
on the vehicle more
back or more front is
up to you.**



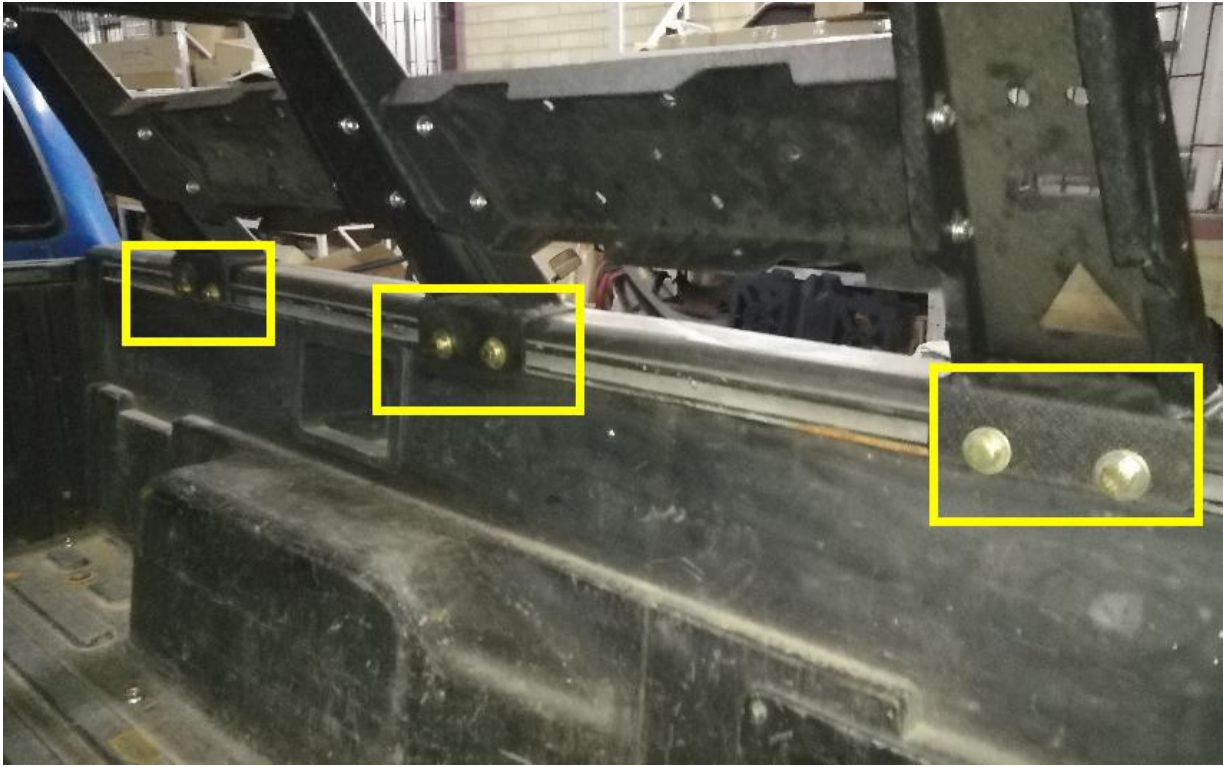
Step 7:

Install the PART "H" with PART "Q" & PART "R" to tighten the Bed Rack.



Step 8:

Install the passenger side in the same method.



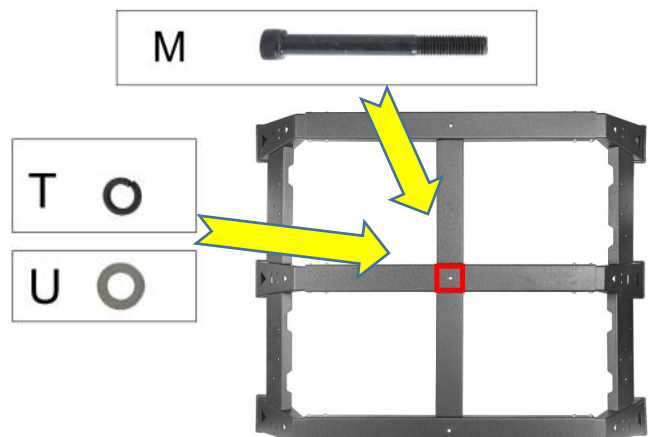
Step 9:

Installation completed.



Attention 2:

**The PART "M", PART "T",
PART "U" are use for install
the spare tire.**





Attention 3:

**The PART "N", PART "O", PART "P" & PART "S" are use for install the JACK.
As shown below. And if no need to install the JACK. Then just forget it or
keep it in somewhere.**

