



---

# BED STIFFENER BRACKET SET

(2005-2021 TACOMA)

---

## INSTALLATION INSTRUCTIONS

### CONTENTS

---

- (1) LH Bed Stiffner
- (1) RH Bed Stiffner
- (2) 7/16-20 x 1" Allen Bolts
- (2) 7/16 Flat Washers
- (6) M8x1.25 x 20mm Allen Bolts
- (6) M8 Flat Washers
- (6) M8 Flange Nuts
- (1) 11/32" Drill Bit

### TOOLS REQUIRED

---

- T-40, T-55 Torx Sockets
- 10mm, 13mm Sockets
- 13mm Wrench
- Ratchet
- 8mm Allen Socket
- Drill

**STEP 1**



Remove (1) T-55 Torx bolt from the floor of the bed.

**STEP 2**

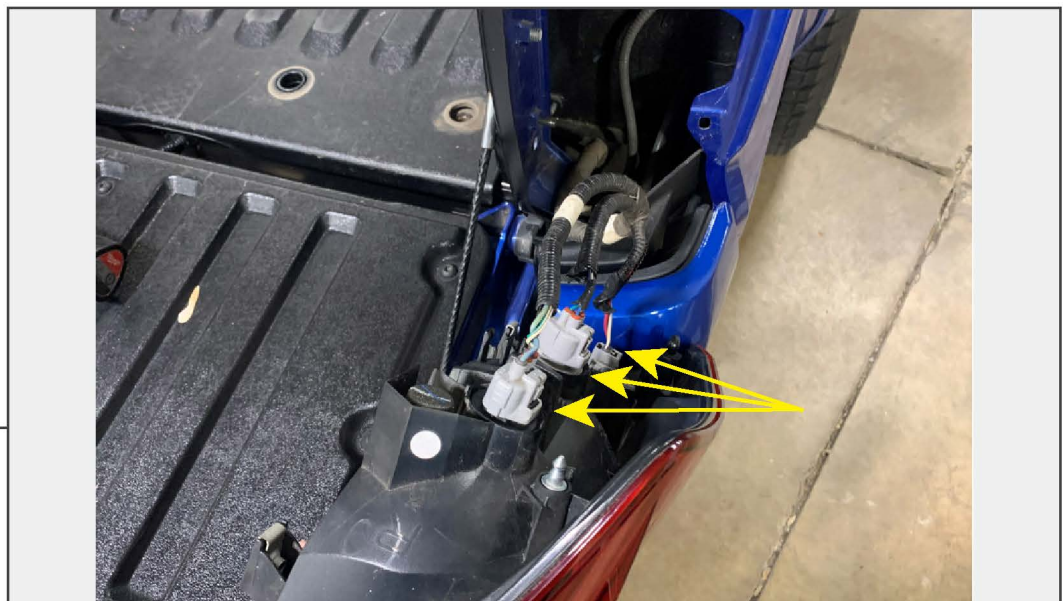


Remove (1) T-40 Torx bolt from the floor of the bed.



**STEP 3**

Remove (2) 10mm bolts from the inside of the tail light.



**STEP 4**

Pull the tail light from the vehicle, and disconnect the (3) electrical harnesses. Set tail light aside. Tuck the wiring harness away from the tail light housing to prevent drilling damage.

**STEP 5**

Align the bed stiffener bracket to the vehicle, ensuring the floor bed mounting bolts align within the stiffener. Using the bracket as a template, mark the (3) bolt holes for drilling using a marker. Drill the holes into the bed using the provided drill bit.

**STEP 6**

Install the (3) M8 x 20mm bolts, flat washers, and flange nuts through the bracket and the bed. Re-assemble the vehicle following steps 1-6 in reverse order.

Repeat steps 1-6 to the opposite side of the vehicle. Installation is now complete.