

REDROCK^{4X4}

Driver's Side Center Console

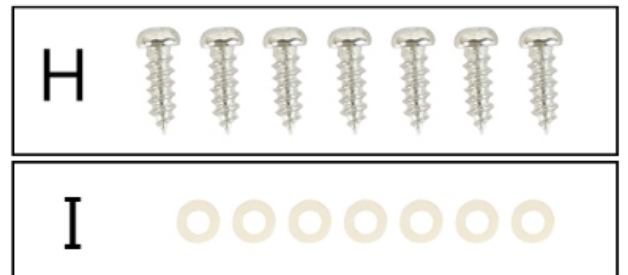
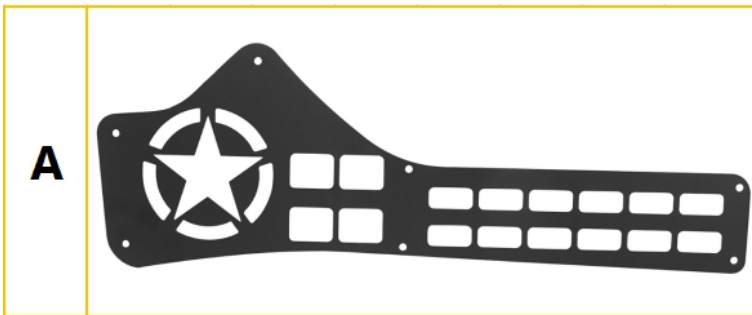
Molle Panel

2016-2021 Tacoma

SKU: TT22612

(1) Contents:

Qty	Part Name	Size(mm)	Qty	Part Name	Size(mm)
1	Molle Panel		H×7	Cross Recessed Round Head Tapping Screw	M5*12
I×7	Nylon Round Spacer	11*6.2*4			



(2) Tools required:

- Phillips Screwdriver;
- Battery Electric Power Drill;



(3) Installation time:

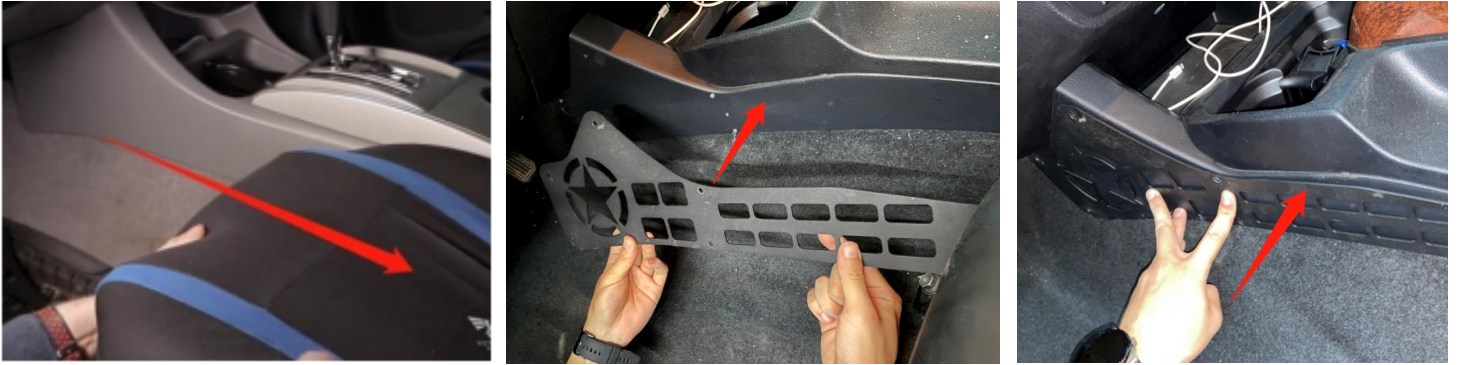
About 30 minutes, 1 person may be needed. Installation time may differ according to your mechanical skill level.

(PLEASE VERIFY ALL PARTS ARE PRESENT AND READ INSTRUCTIONS CAREFULLY BEFORE STARTING INSTALLATION!)

(4) Installation instruction:

Step 1:

Move your seat all the way make as much room as possible before installing the panel. Line up the panel so its flush with the center console. Make the screw holes with a sharpie.



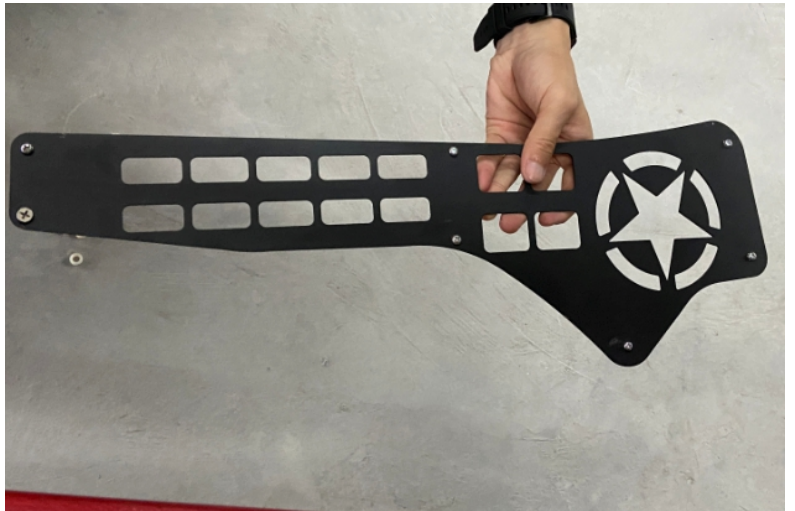
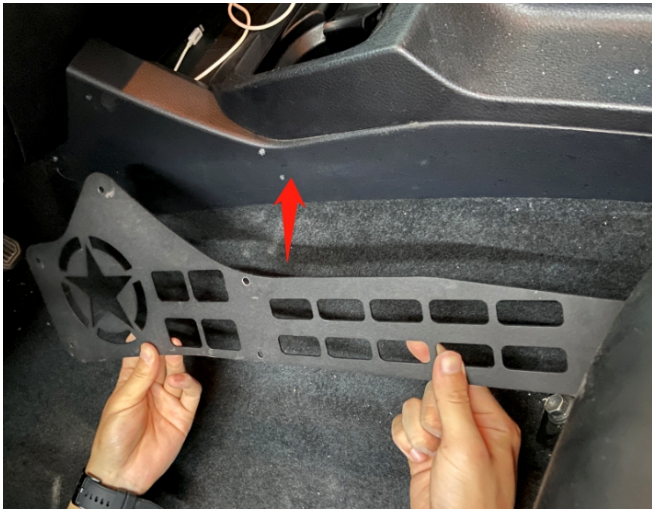
Step 2:

Use a battery electric power drill to puncture 7 holes into the plastic.



Step3:

Install the panel using a Phillips screwdriver. Use one Part "H" and one spacer per hole.



I



You need to stick the Part "I" with glue.



Step 4:

The installation is complete.



Attention:

1.The product parts in this instruction may differ slightly from the actual product contents but generally does not affect the installation of the product.

2.Please feel free to contact your distributor if you have any kind of question about your purchase.