



2” LIFT COILOVER KIT

(2005-2023 TACOMA) 

INSTALLATION INSTRUCTIONS

CONTENTS

- (2) Front Coil-Over Assemblies
- (2) Rear Shocks
- (1) Spanner Wrench
- (1) Allen Key

TOOLS REQUIRED

- 7mm, 10mm, 12mm, 14mm, 17mm, 19mm, 21mm, Sockets/Wrenches
- Pliers
- Pry Bars
- Hammer
- Jack & Jack Stands
- Penetrating Fluid

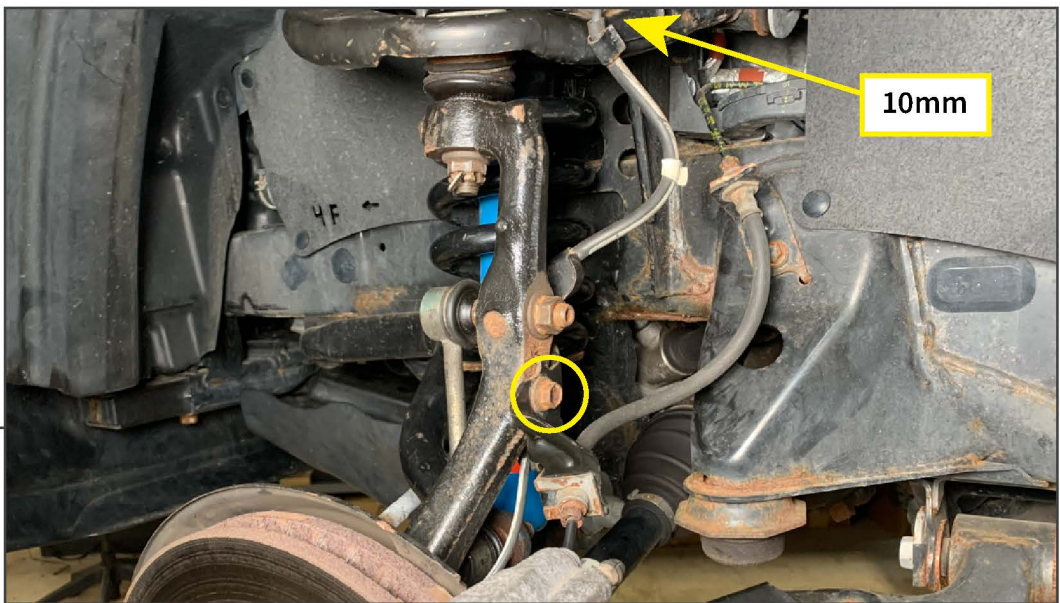
SKU # TT15854



**STEP 1
(FRONT)**

Raise and safely support the vehicle in the air. Remove wheel. Remove the cotter pin from the tie rod end stud using pliers. Remove (1) 19mm nut from the tie rod end.

Note: Once the nut is loose, strike the knuckle with a hammer to dislodge the tie rod end from the knuckle.



STEP 2

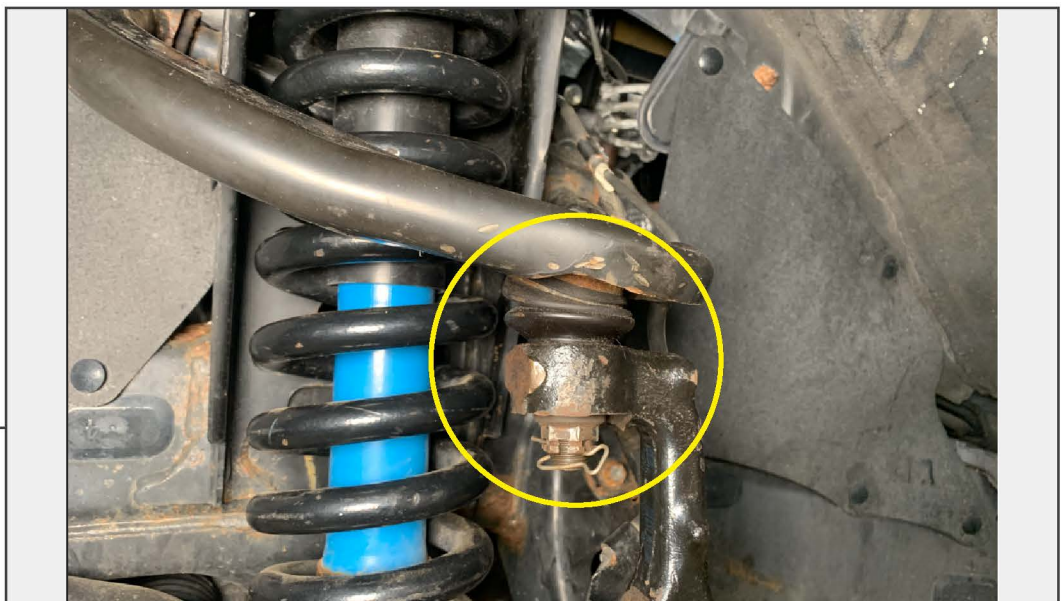
Remove (1) 12mm bolt from the steering knuckle, and (1) 10mm bolt from the upper control arm to release the ABS sensor/brake hose to allow slack during disassembly.



STEP 3

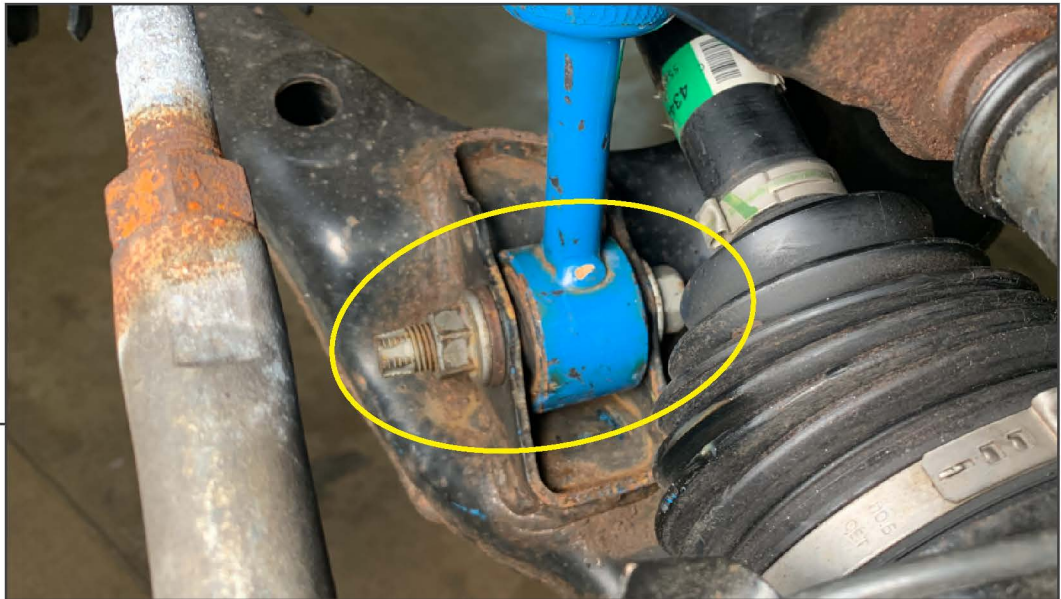
Remove (1) 17mm nut from the top of the sway bar link. **It is suggested to remove the sway bar link on the opposite side at this time to allow the sway bar to move away from the strut assembly.

Note: If joint assembly spins, use a 17mm wrench and 6mm Allen key to remove the nut.



STEP 4

Remove the cotter pin from the upper ball joint using pliers. Loosen (1) 21mm nut on the upper ball joint. Once loose, strike the knuckle with a hammer to dislodge the ball joint from the knuckle. Once dislodged, remove nut from ball joint and allow the control arm to lift away from the steering knuckle.



STEP 5

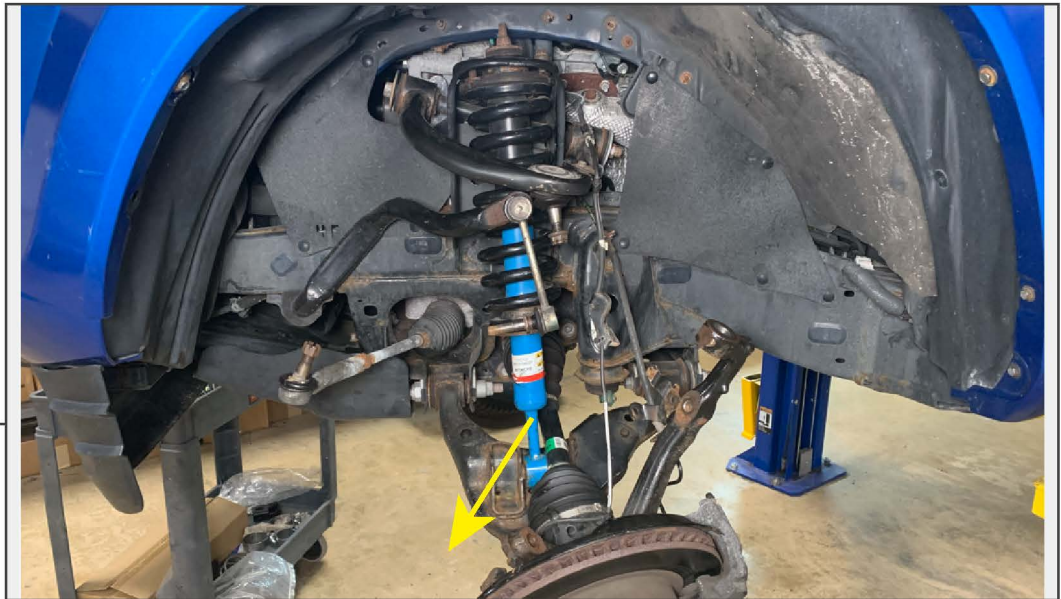
Remove (1) 21mm bolt from the bottom of the strut assembly.



STEP 6

Remove (3) 14mm nuts from the upper strut assembly.

STEP 7



Rotate the sway bar assembly towards the front of the vehicle, then support the bar in place away from the strut assembly. Lower the strut assembly from the vehicle.

STEP 8



Install the coil-over assembly into the vehicle. Use the (3) provided 14mm nuts to secure the upper mount to the vehicle. Install the lower coil-over mount to the control arm using the original hardware.

Note: Using an adjustable wrench, slightly bend the lower strut mounting ears on the control arm outwards to allow the coil-over to fit, if necessary.

STEP 9



Re-assemble the vehicle suspension following steps 1-8 in reverse order using original hardware.

See last page for torque specifications.

**STEP 10
(REAR)**



Remove rear wheel. Remove (1) 14mm nut located on the top of the shock absorber.



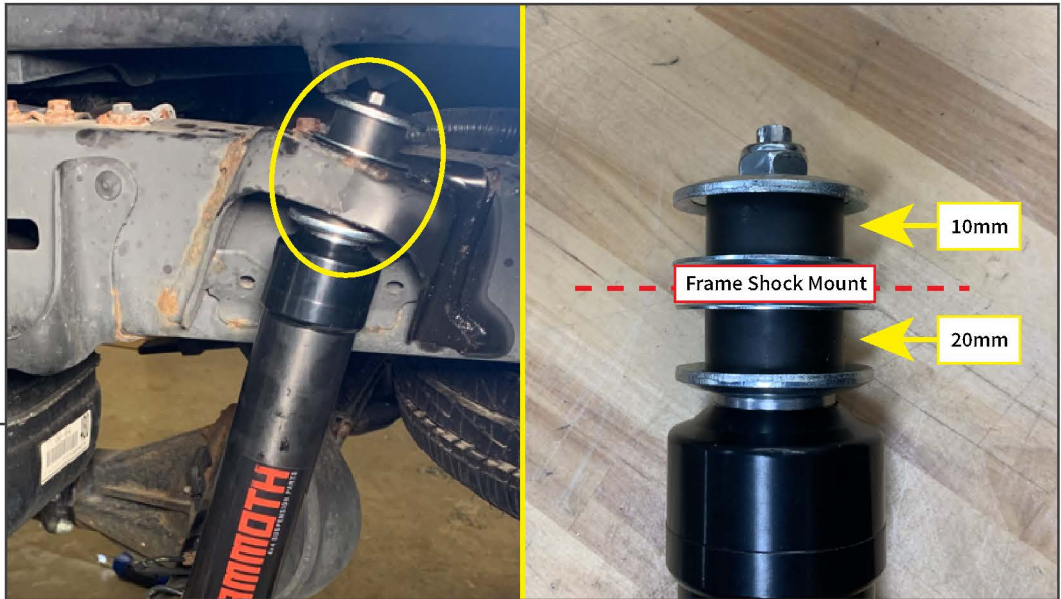
STEP 11

Remove (1) 17mm bolt from the bottom of the shock absorber. Remove the shock absorber from the vehicle.



STEP 12

Inspect the upper shock absorber mount to ensure no hardware is stuck to either side of the frame. Remove any stuck hardware if applicable.



STEP 13

Install the top of the shock absorber to the frame mount using the provided hardware and bushings.

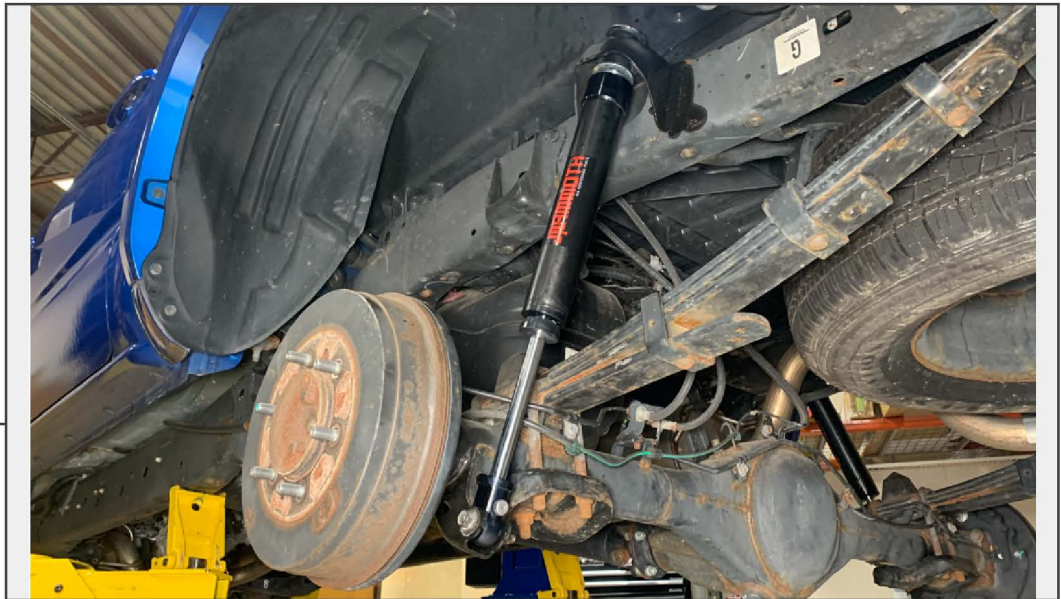
Note: 10mm bushing installs above the frame, 20mm bushing installs under the frame.



STEP 14

Install the bottom of the shock absorber to the axle using the original hardware.

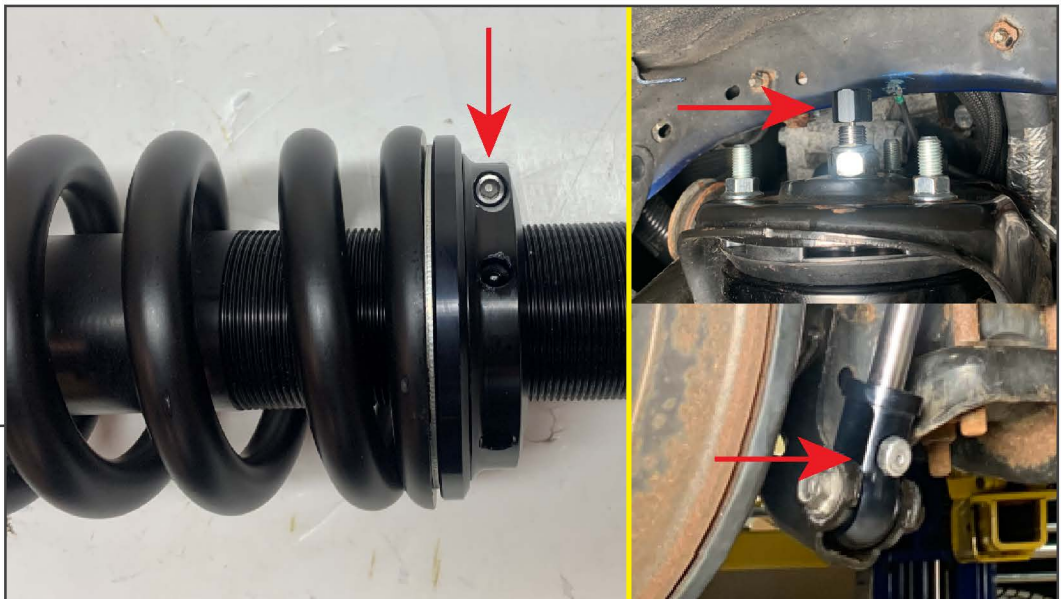
STEP 15



Installation is now complete.

See last page for torque specifications.

**HEIGHT
ADJUSTMENT**



To adjust front ride height, loosen (1) Allen bolt located at the base of the spring mount. Once loose, turn the base with the spanner wrench to raise/lower the mount to change ride height.

Torque Specifications

FRONT

Upper Strut Nuts: 47 ft-lbs.
Lower Strut Bolt: 61 ft-lbs.
Tie Rod End: 41 ft-lbs.
Upper Ball Joint Nut: 81 ft-lbs.
Sway Bar Link Nut: 52 ft-lbs.

REAR

Upper Shock Absorber Nut: 15 ft-lbs.
Lower Shock Absorber Bolt: 43 ft-lbs.

After any suspension work, it is highly recommended to get a front end alignment to prevent premature wear of suspension components and tires.