

20204
07-13 GMC
SIERRA 1500
(ALL TERRAIN)



20204
07-13 GMC
SIERRA 1500
(ALL TERRAIN)

2007-2013 GMC SIERRA 1500 (ALL TERRAIN)
BILLET INSERT

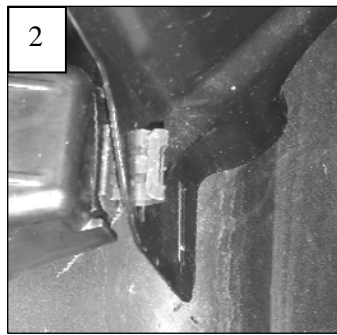
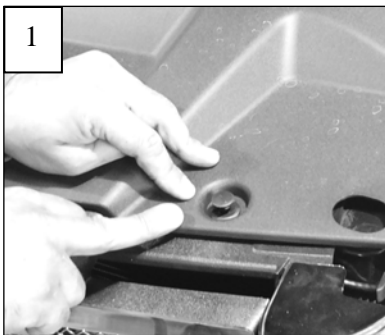
Recommended Tools:

Phillips / Slotted Screwdrivers
10mm Socket & Ratchet
5/16" Wrench
Drill & 3/16" Bit
Die Grinder or Jig-Saw

Parts List / Hardware:

1 Billet Insert
6 #8 x 3/4 Phillips Screws
6 #8 Flat nuts

Read and understand instructions before attempting installation



Step 1

Test fit the grille into the opening. Remove plastic rivets securing the radiator cover; on top of the grille (1). Now remove the four 10mm bolts along the top of the grille. The grille has six metal clips that clip into the core support (2); two behind the GMC logo and four along the bottom. Pull the grille forward; use a slotted screwdriver to release the clips and remove the grille.



Step 2

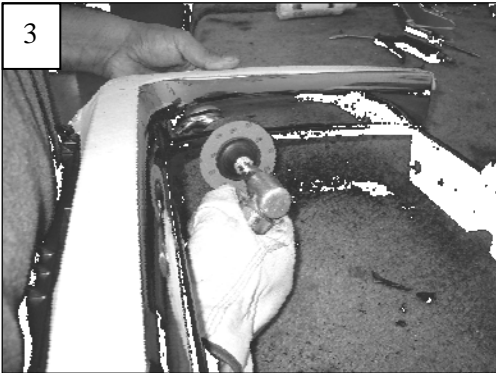
Apply masking tape to the chrome or painted perimeter of the grille. The plastic bar along the top that bolts to the core support must be retained to install the grille. Do not cut this bar from the factory grille. Cut the four vertical bars 1/2" below the upper cross bar. Now cut the center cross bars from the grille; make three cuts on each end. Make your last four cuts along the bottom. The center bars securing the GMC logo will now separate from the grille (3).

Step 3

Use a die grinder or file to smooth any rough edges around the opening. Test fit the grille in place; smooth any remaining rough edges (4).

20204

20204



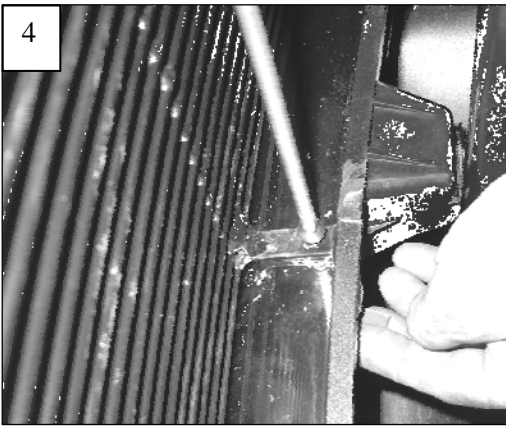
3

Step 4

Center the grille into the opening. Use a marker to locate the mounting hole to the grille. Drill a 3/16" hole at each mark. Use the #8 screws and flat nuts to secure the grille in place (4).

Step 5

Re-install the grille and radiator cover onto the vehicle.



4