



MOLDED MUD GUARDS

(2009-2018 1500, 2500, 3500)

INSTALLATION INSTRUCTIONS

CONTENTS

- (1) LH Front Mud Guard
- (1) RH Front Mud Guard
- (1) LH Rear Mud Guard
- (1) RH Rear Mud Guard
- (8) Phillips Screws
- (8) Flat Washers
- (8) Screw Clips

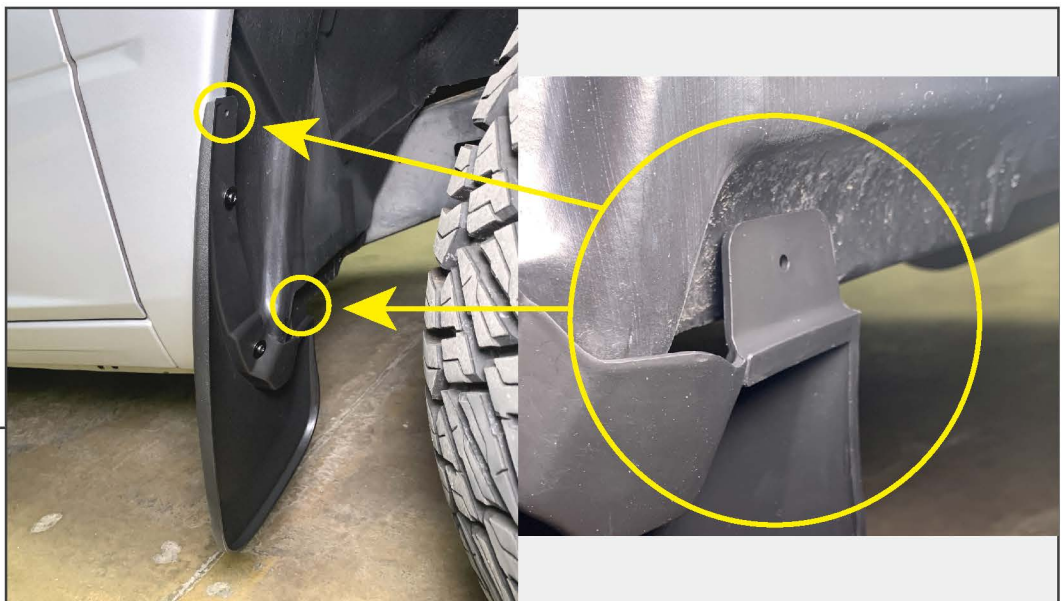
TOOLS REQUIRED

- Phillips Screwdriver
- Drill
- 1/8" Drill Bit
- Panel Removal Tool



**STEP 1
(FRONT)**

Remove (2) 8mm screws from the fender lip.



STEP 2

Secure the mud guard to the vehicle using the (2) original 8mm screws. Using a drill and 1/8" drill bit, use the mud guard as a template to drill through the vehicle fender/fender liner. Secure the mud guard to the fender using (1) Phillips screw, (1) flat washer, and (1) screw clip per hole.

**STEP 3
(REAR)**

Remove (2) 8mm screws from the fender lip. Remove (2) plastic push clips from the bottom of the bed and remove the plastic panel from the vehicle.

**STEP 4**

Secure the the mud guard to the vehicle using the (2) original 8mm screws. Using a drill and 1/8" drill bit, use the mud guard as a template to drill through the vehicle fender/fender liner. Secure the mud guard to the fender using (1) Phillips screw, (1) flat washer, and (1) screw clip per hole.



STEP 5

Repeat steps 1-4 to the opposite side of the vehicle.

Installation is now complete.