



# HD REAR DRIVESHAFT

(1997-2006 WRANGLER TJ)

---

## INSTALLATION INSTRUCTIONS

### CONTENTS

---

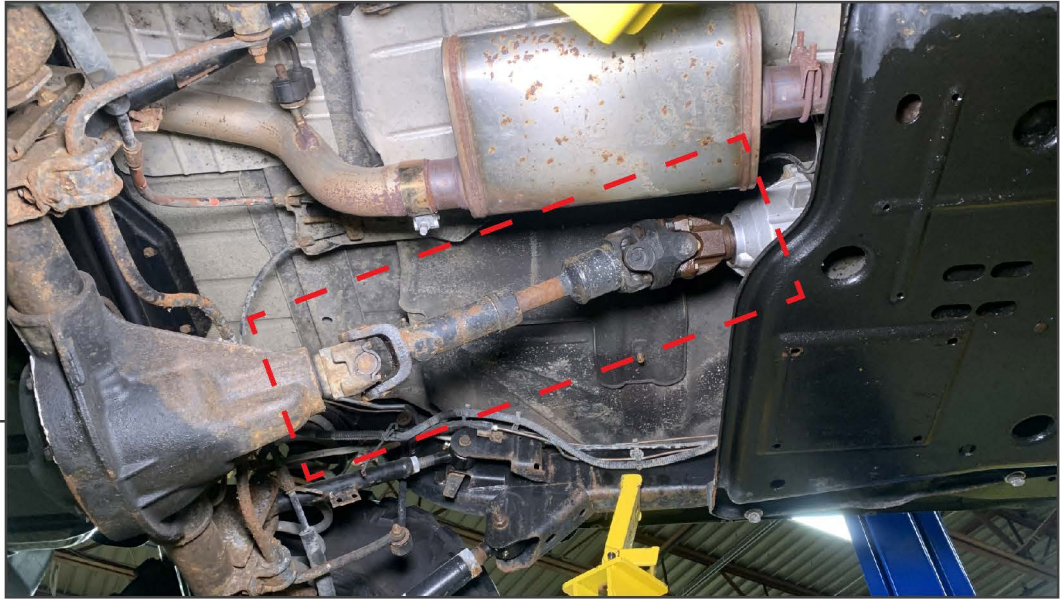
(1) Driveshaft Assembly

### TOOLS REQUIRED

---

6mm Allen Socket  
1/2" Socket  
5/16" Socket  
30mm Socket  
Ratchet  
Floor Jack & Jack Stands

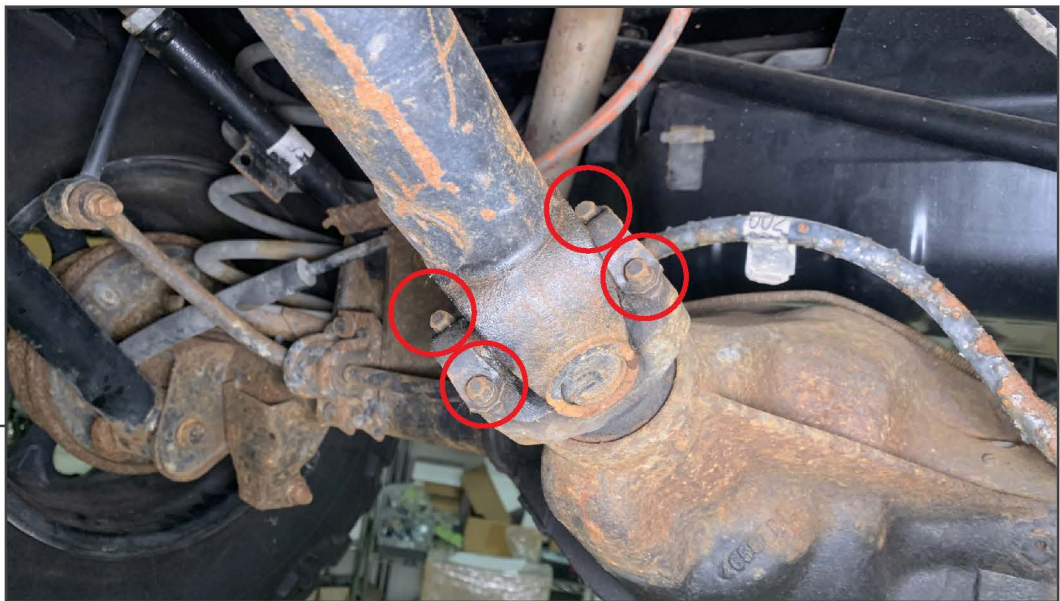
SKU # J191258



**STEP 1**

Pull the vehicle parking brake and chock the wheels into place.

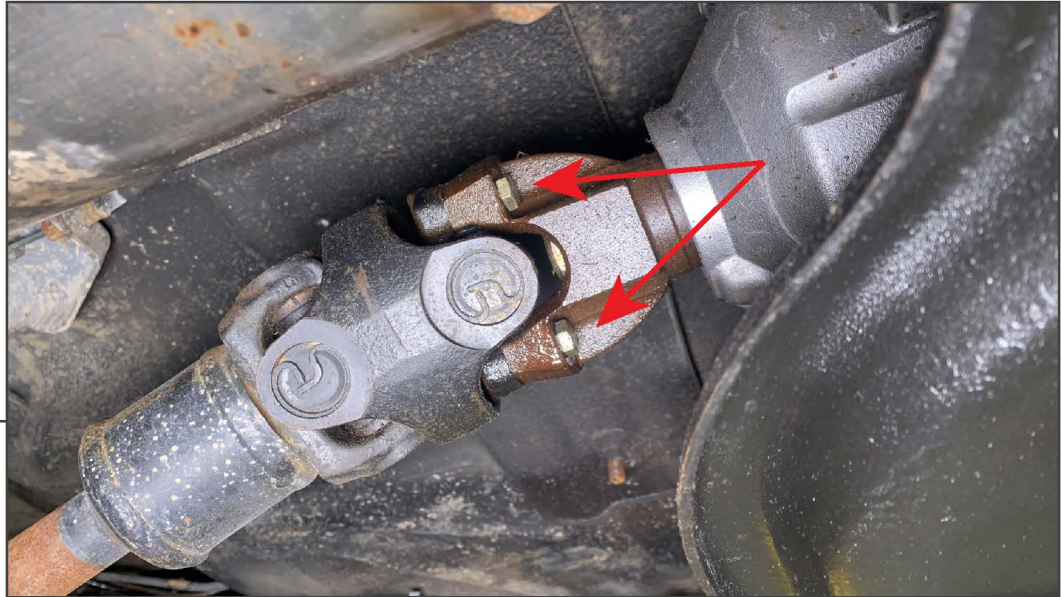
Safely lift and support the vehicle off of the ground using a floor jack and jack stands. Locate the rear driveshaft underneath the vehicle.



**STEP 2**

Remove (4) 5/16" bolts from the U-Joint caps on the pinion. Using a pry bar, pull the driveshaft towards the front of the vehicle to allow the rear of the driveshaft to disconnect from the pinion.

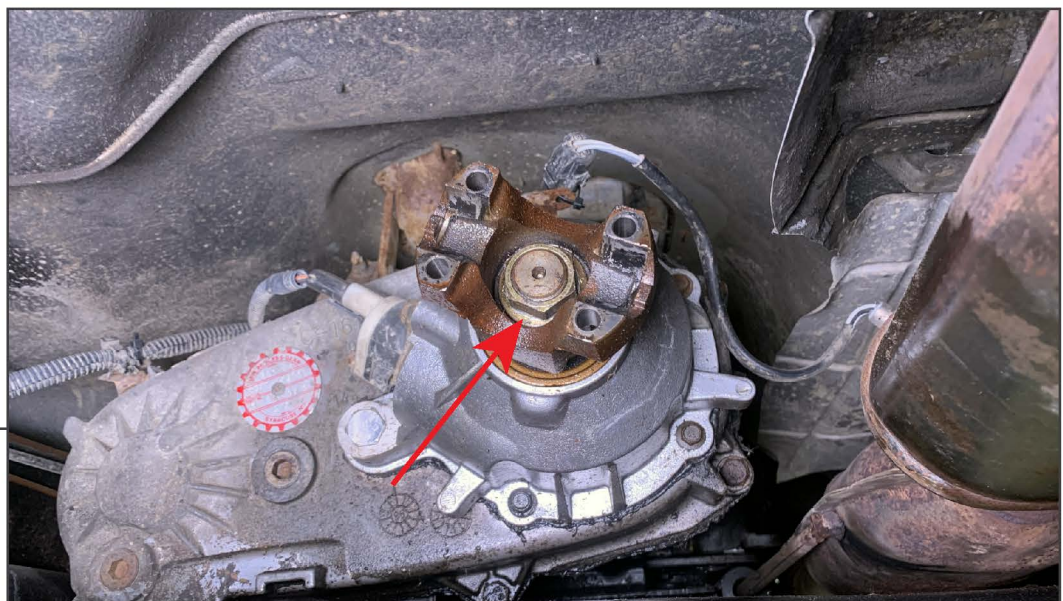
Note: The U-Joint caps and bolts will be reused.



**STEP 3**

If equipped with the OEM driveshaft, pull the driveshaft assembly from the vehicle transfer case. Installation of the new driveshaft requires an additional Slip Yoke Eliminator Kit (see SKU J14911).

If equipped with a previously installed Slip Yoke Eliminator, unbolt the (4) 1/2" bolts from the Slip Yoke Eliminator.



**STEP 4**

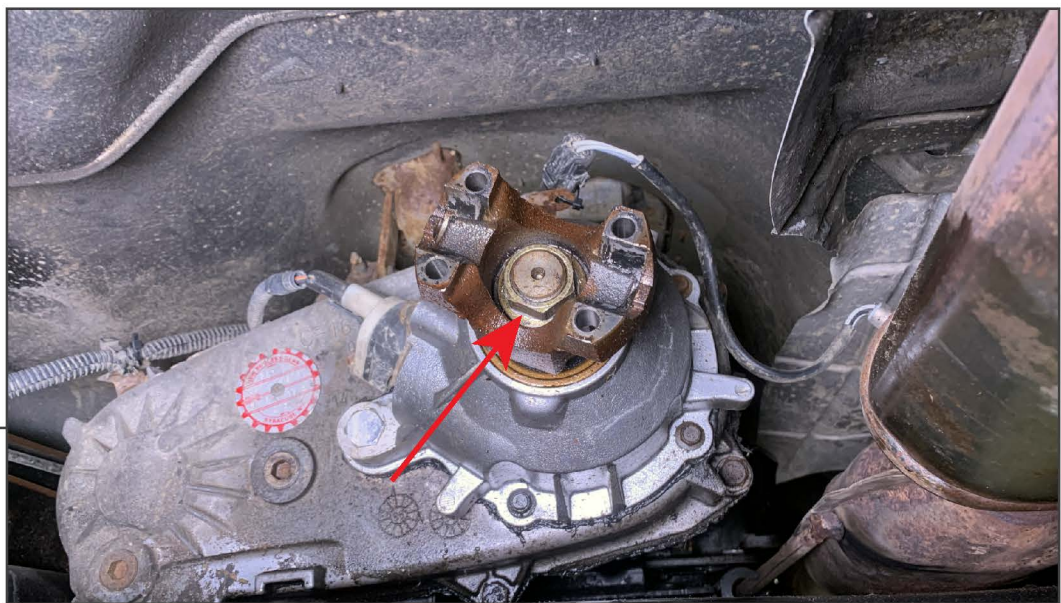
If equipped with a previously installed Slip Yoke Eliminator, unbolt the (1) 30mm nut from the Slip Yoke Eliminator. Remove the original Slip Yoke Eliminator from the transfer case using a pry bar.

Note: Transmission fluid may leak from the transfer case with the Slip Yoke Eliminator removed. Ensure to check fluid level after the new driveshaft installation.



**STEP 5**

Remove the (4) 6mm Allen bolts from the new driveshaft yoke. Remove the pre-installed plastic cap.



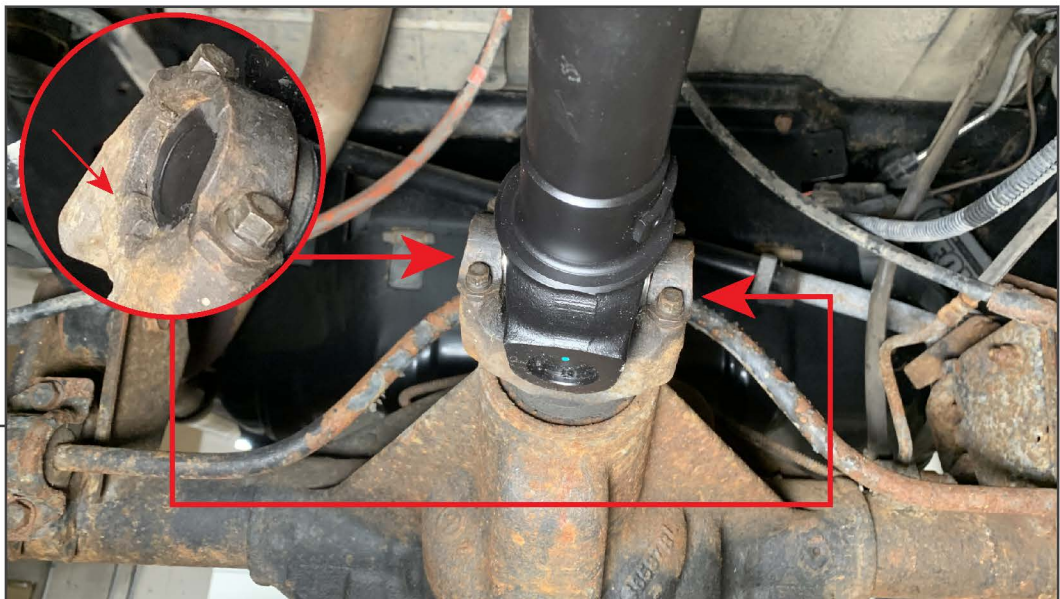
**STEP 6**

Fit the new driveshaft yoke to the vehicle transfer case using the original (1) 30mm nut. Tighten to 140 ft. lbs.



**STEP 7**

Fit the new driveshaft to the transfer case yoke, and secure using the (4) 6mm Allen bolts. Tighten all bolts evenly until secure.



**STEP 8**

Extend/retract the driveshaft as necessary to fit the U-Joint end caps into the rear pinion. Ensure each end cap is properly fitted into the pinion, and are not over-lapping the stopper on each side. Secure the rear of the driveshaft using the original (4) 5/16" bolts and end caps. Tighten all bolts evenly until secure.



---

**STEP 9**

Installation is now complete.