



HD FRONT DRIVESHAFT

(1997-2006 WRANGLER TJ)

INSTALLATION INSTRUCTIONS

CONTENTS

(1) Front Driveshaft Assembly

TOOLS REQUIRED

5/16" Wrench/Socket
1/2" Socket
3/4" Socket
Ratchet
Floor Jack & Jack Stands
Pry Bar
Grease Gun

SKU # J191257

STEP 1



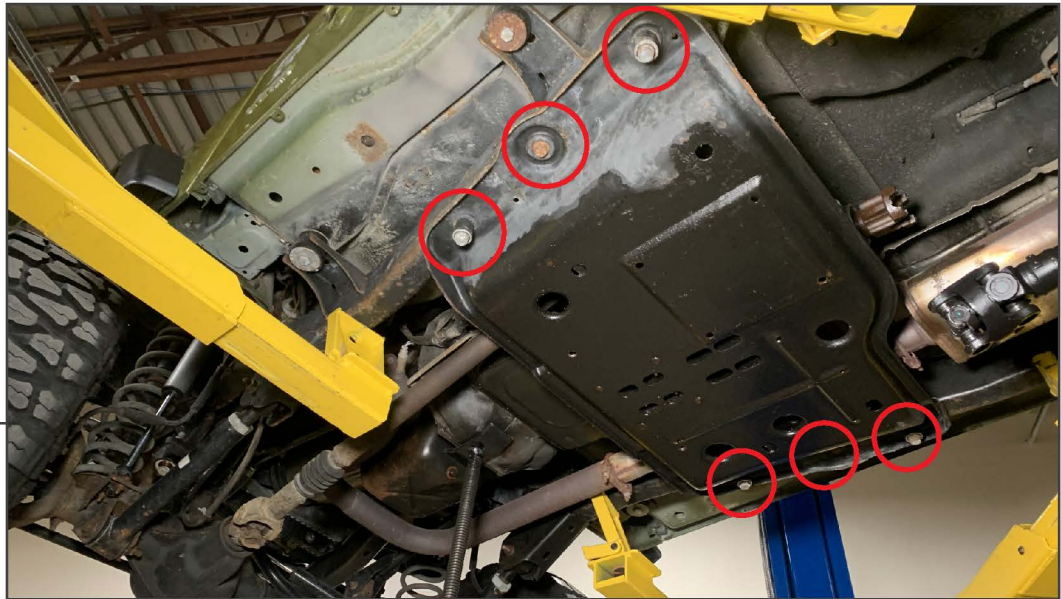
Engage the parking brake and chock the wheels into place.

Safely lift and support the vehicle off of the ground using a floor jack and jack stands. Locate the front driveshaft underneath the vehicle.

STEP 2



Support the vehicle transmission/transfer case using a floor jack. Then, remove the (4) 1/2" nuts securing the transmission mount to the vehicle skid plate.



STEP 3

With assistance, remove the (6) 3/4" bolts securing the skid plate to the vehicle frame. Then, remove the skid plate and set aside.



STEP 4

Remove the (4) 5/16" bolts from the front of the transfer case yoke to disconnect the driveshaft from the transfer case.



STEP 5

Remove the (4) 5/16" bolts and U-Joint caps from the front differential yoke to disconnect the driveshaft from the differential.

Compress the driveshaft and remove the driveshaft from the vehicle. Using a pry bar may be necessary.



STEP 6

Lift the new driveshaft to the vehicle transfer case yoke. Loosely secure the driveshaft to the yoke using the provided (4) M8x1.25 x 40mm Allen bolts, (4) M8 lock washers, and (4) M8 flat washers. Tighten all M8 bolts evenly to 21 ft. lbs.



STEP 7

Extend/retract the driveshaft as necessary to fit the U-Joint end caps into the rear pinion. Ensure each end cap is properly fitted into the pinion, and are not over-lapping the stopper on each side. Secure the front of the driveshaft using the original (4) 5/16" bolts and end caps. Tighten all bolts evenly until secure.



STEP 8

Re-install the vehicle skid plate and transmission mount using the OEM hardware.

Grease the slip joint using a grease gun and synthetic grease.

Installation is now complete.