



HD FRONT DRIVESHAFT

(2007-2018 WRANGLER JK)

INSTALLATION INSTRUCTIONS

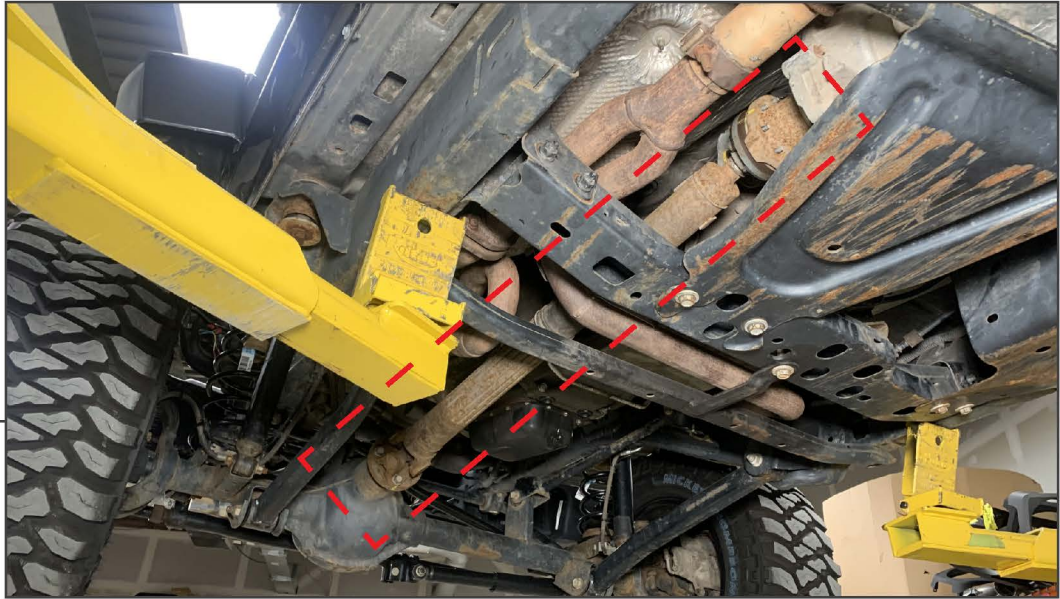
CONTENTS

- (1) Driveshaft Assembly
- (4) M8x1.25 x 40mm Allen Bolts
- (4) M8 Lock Washers
- (4) M8 Flat Washers

TOOLS REQUIRED

- 6mm Allen Key
- 8mm, 15mm, 32mm Sockets
- Ratchet/Breaker Bar
- Socket Extension
- Rubber Hammer
- Pry Bar
- Floor Jack & Jack Stands
- Grease Gun

SKU # J191256



STEP 1

Engage the vehicle parking brake, and chock the wheels into place.

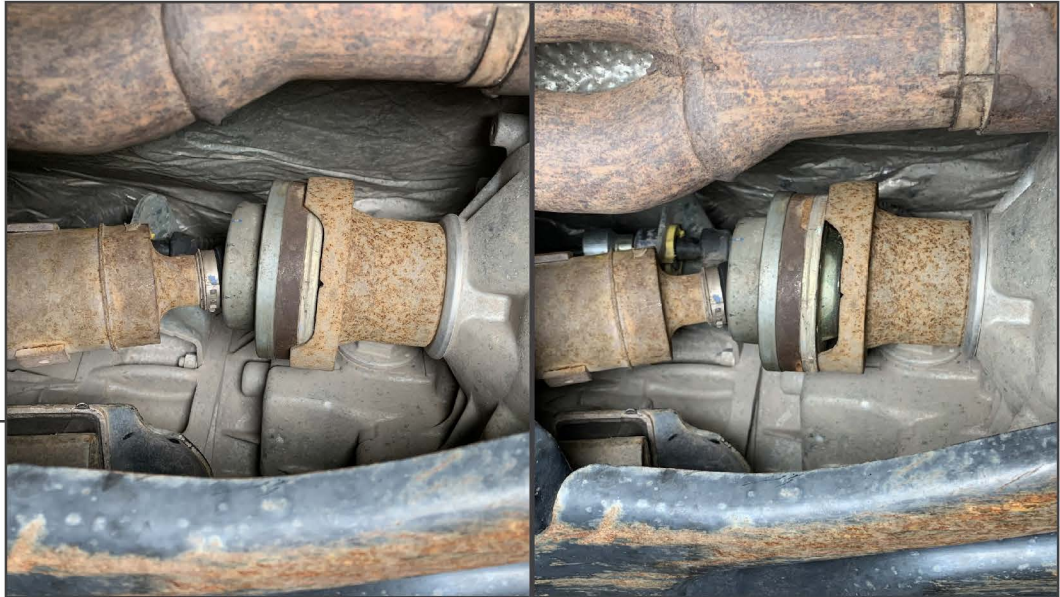
Safely lift and support the vehicle off of the ground using a floor jack and jack stands. Locate the front driveshaft underneath the vehicle.



STEP 2

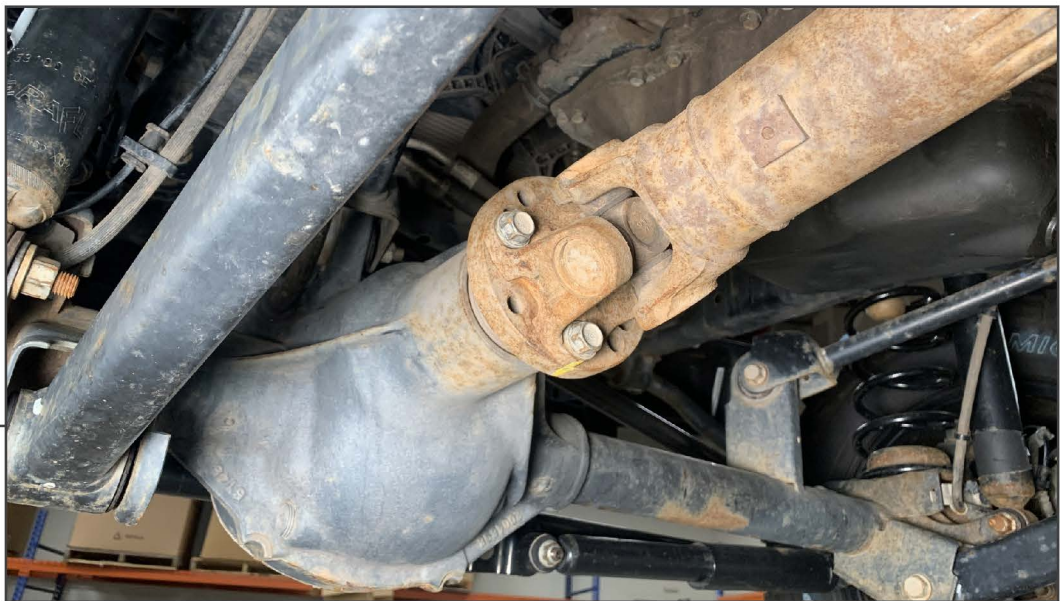
Remove (8) 8mm bolts securing the transfer case side of the driveshaft to the transfer case yoke.

STEP 3



Using a rubber hammer and a pry bar, dislodge the driveshaft from the transfer case yoke. The slip joint on the driveshaft will allow the driveshaft to move.

STEP 4



Remove (4) 15mm bolts to disconnect the driveshaft from the differential pinion. Use a rubber hammer dislodge the driveshaft. Remove the driveshaft from the vehicle.

Note: The (4) 15mm bolts will be reused.



STEP 5

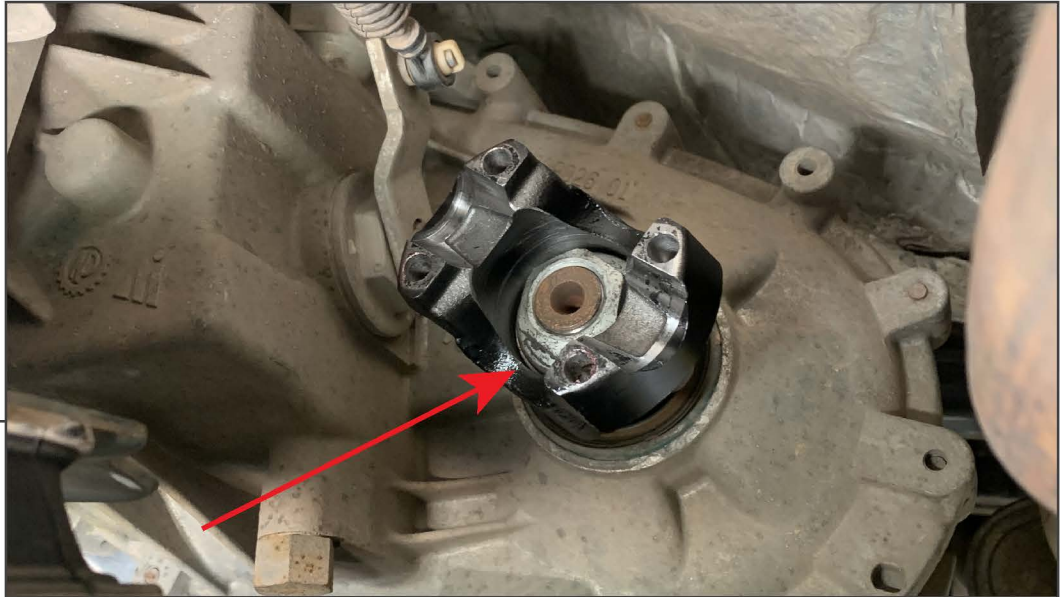
Loosen (1) 32mm nut inside of the transfer case yoke. Then, use a rubber hammer to dislodge the yoke from the transfer case. Once dislodged, remove the original yoke.

Note: The 32mm nut will be reused.



STEP 6

Remove the (4) 6mm Allen bolts from the new driveshaft yoke. Remove the pre-installed plastic cap. Transfer the rubber O-Ring from the original yoke to the new driveshaft yoke.



STEP 7

Secure the new driveshaft yoke to the transfer case using the original 32mm nut. Tighten the nut to 110 ft. lbs.



STEP 8

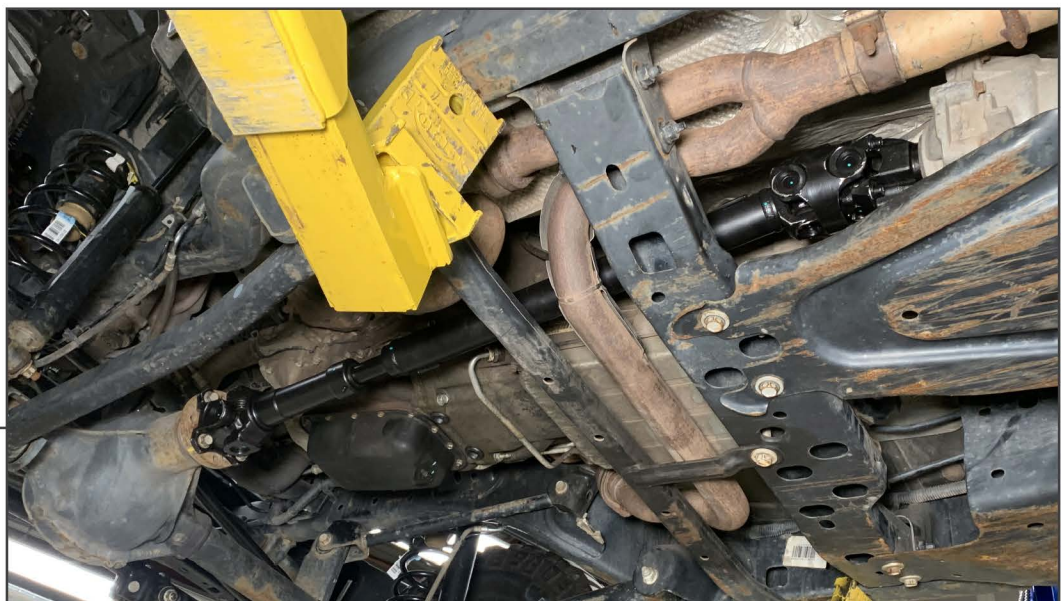
Lift the new driveshaft to the vehicle transfer case yoke. Loosely secure the driveshaft to the yoke using the provided (4) M8x1.25 x 40mm Allen bolts, (4) M8 lock washers, and (4) M8 flat washers. Tighten all M8 bolts evenly to 21 ft. lbs.

STEP 9



Secure the front of the driveshaft to the differential pinion using the original (4) 15mm bolts. Tighten all hardware evenly to 89 ft. lbs.

STEP 10



Grease the driveshaft slip joint using a grease gun and synthetic grease.

Installation is now complete.