



Installation Instructions




FITS: 18+ Jeep Wrangler JL
2020+ Jeep Gladiator JT

Rear Half Door
Part#: J184905

TOOLS NEEDED

Ratchet	T50 Torx Bit	Allen Wrench Set	13mm Wrench	Phillips Screwdriver
---------	--------------	------------------	-------------	----------------------




COMPONENTS & HARDWARE

Hardware #	DESC.	QTY	IMAGE
B11-15-0902	Rear Door (Driver Side)	1	
B11-15-0903	Rear Door (Passenger Side)	1	
B11-15-0914	Inner Mesh Screen	2	
B11-15-0915	Door Foam Strip	2	
B11-15-0178	Door Strap	2	
B15-12-0006	Rubber Gasket	2	




HINGES HARDWARE

Hardware #	DESC.	QTY	IMAGE	Hardware #	DESC.	QTY	IMAGE
B11-15-0860	Door Hinge(Driver Side)	2		E40-12-0026	M8 Flat Washer	12	
B11-15-0861	Door Hinge(Passenger Side)	2		E40-12-0008	M8 Split Washer	8	
E40-13-0034	M8x20mm Allen Head Bolt	8		E40-11-0007	M8 Lock Nut	4	
E40-11-0024	M8 Hex Head Nut	8					

DOOR LATCH HARDWARE

Hardware #	DESC.	QTY	IMAGE	Hardware #	DESC.	QTY	IMAGE
B15-12-0003	Door Latch (Driver Side)	1		E40-12-0042	M6 Flat Washer	4	
B15-12-0004	Door Latch (Passenger Side)	1		E40-12-0007	M6 Split Washer	4	
E40-13-0031	M6x25mm Allen Head Bolt	4					

RUBBER GASKET HARDWARE

Hardware #	DESC.	QTY	IMAGE	Hardware #	DESC.	QTY	IMAGE
E40-13-0029	M6x16mm Allen Head Bolt	2		E40-12-0042	M6 Flat Washer	2	
E40-12-0007	M6 Split Washer	2					

DOOR HINGE INSTALLATION

Rear Door

Driver top hinge

Driver bottom hinge



Step 1.

Rear Door Installation

Locate driver hinge. Line up the holes in the hinge with the holes in the top mounting holes on the tubular door. Place a supplied M8x20mm button bolt through the hole in the hinges and through the hole on the door. Place a supplied M8 flat washer and M8 split washer at the end of the bolt. Start a supplied M8 hex nut at the end of bolt. Repeat step for remaining button head bolt.

Repeat process for other rear door.

Removing of Factory Door



Step 1.

Using a T50 torx socket remove the 2 nuts attached to the bottom of the hinge pins on the rear doors. Set nuts aside for later use.



Step 2.

Inside the door by the kick panel area remove the wiring cover



Step 3.

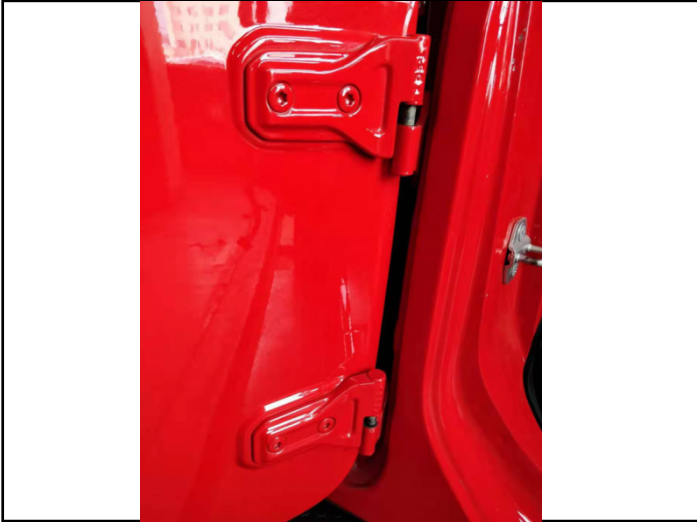
Unclip the wiring harness that is attached to the door



Step 4.

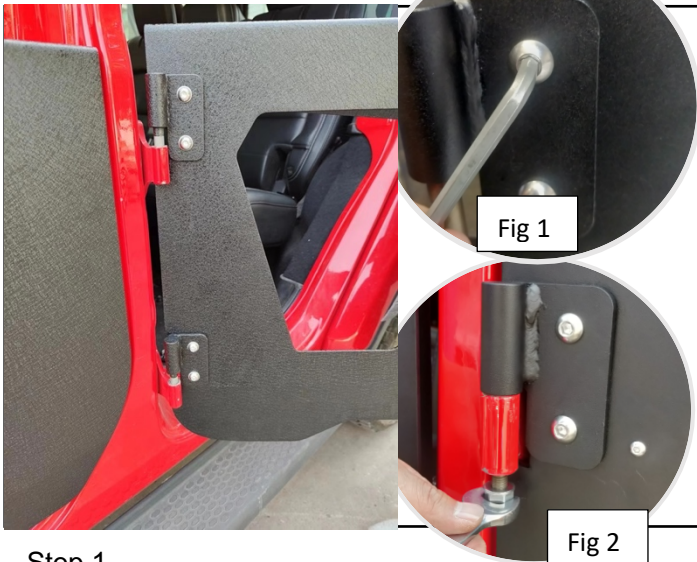
Lift off the door stopper strap.

Removing of Factory Door continued



Step 5.
Lift the door off the hinges and set aside.

Installing Rear Doors

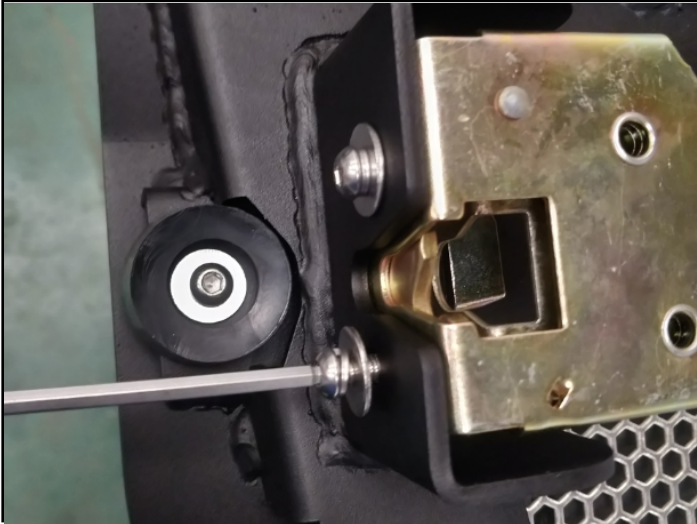


Step 1.
Lower the door onto the factory hinges on the vehicle. Open and close the door ensuring proper operation. Once satisfied with the function proceed to tighten down the hinge bolts using a 13 mm socket on the bolt and a 3/16" Allen head wrench on the bolts (Fig 1).
Using supplied M8 flat washer and M8 lock nut, bolt the door onto the hinges (Fig 2).



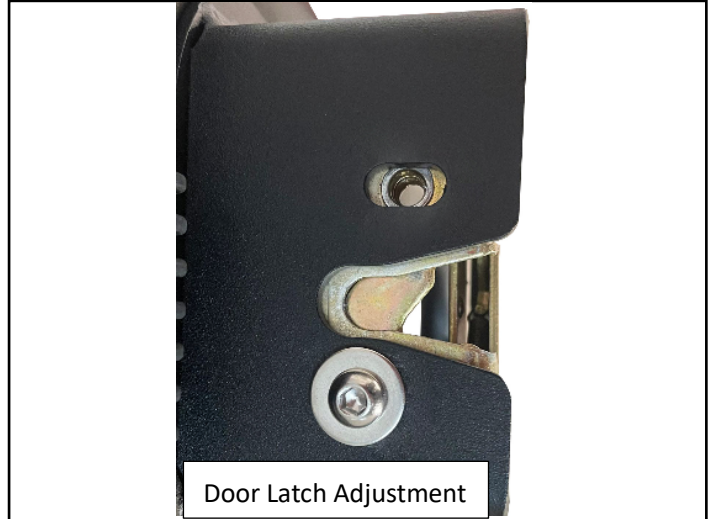
Step 2.
Attach the new door stopper straps provided on the new door.

Installing Door Latch



Step 1.

Place the supplied M6x25mm Allen head bolt, M6 split washer and M6 mounting washer through the hole in the door and the hole in the door latch. Using a 5/32 Allen wrench tighten down slightly.



Step 2.

Grab door latch handle and begin to adjust the door latch forward and backward until find the proper position (this might take a few tries). Close the door to make sure there is no rattling.



Installation Finished