



# TONNEAU COVER

(1997-2006 WRANGLER TJ ; EXCLUDING UNLIMITED)

---

## INSTALLATION INSTRUCTIONS

### CONTENTS

---

- (1) Tonneau Cover
- (1) Merge Panel
- (3) Button Head Screws
- (3) Plastic Nuts
- (6) Rubber Grommets

### TOOLS REQUIRED

---

Phillips Screwdriver

SKU # J179605

## STEP 1



Remove the vehicle soft top from the vehicle. Remove/fold downward the rear seat.

Note: If vehicle is not equip with a soft top, OEM soft top tailgate bar and mounting brackets must be purchased and installed. Prior to installation, place the tonneau cover in the sun to allow the material to become flexible.

## STEP 2



Lay out and identify the tonneau cover components. Identify the layout of the tonneau cover by locating the rear roll bar cutouts.

The merge panel is to be used with a windbreaker (sold separately).

## STEP 3



Under the rear of the tonneau cover, locate the rod flap. Feed the rod flap through the tailgate bar.

## STEP 4



Using the attached Velcro, wrap the roll bar cutouts around the vehicle roll bar on both sides of the vehicle.

Tuck the plastic along the inner edge of the tonneau cover under the vehicle corner lip.





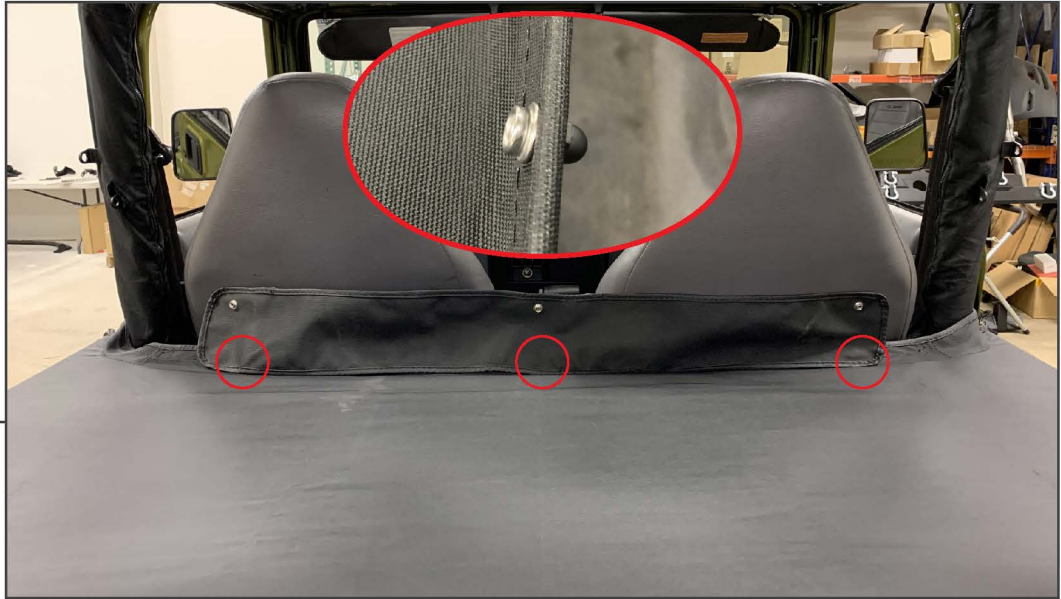
## STEP 5

Tuck the plastic along the inner edge of the tonneau cover under the vehicle side lip on both sides of the vehicle.



## STEP 6

Secure the front straps around the vehicle roll bar on both sides of the vehicle.



## STEP 7

**Merge Panel:** If installing a windbreaker (SKU: J174543), add the merge panel to the front of the tonneau cover using (3) button head screws, (6) rubber grommets, and (3) plastic nuts. Ensure to use the windbreaker as a template to ensure proper placement. Insert the screws through the tonneau cover material using a Phillips head screwdriver.



## STEP 8

Installation is now complete.