



HD SPARE TIRE MOUNT WITH JEEP LOGO

(2007-2018 WRANGLER JK)

INSTALLATION INSTRUCTIONS

CONTENTS

(1) Base Plate	(4) M12 Washers
(1) Stud Plate	(14) M10 Washers
(1) Intermediate Plate	(4) M6 Washers
(2) 3rd Brake Light Brackets	(7) M10x1.50 Lock Nuts
(1) Foam Pad	(2) M6x1.00 Lock Nuts
(4) M12x1.75 40mm Bolts	(3) 19mm Lug Nuts
(7) M10x1.50 20mm Bolts	(1) 4mm Allen Key
(2) M6x1.00 20mm Bolts	

TOOLS REQUIRED

13, 17, 18, 19mm
Wrench/Socket
4mm Allen Key/Socket
Phillips head screwdriver

SKU # J174552

STEP 1



Open the tailgate, using a soft pry tool, pry the plastic trim panel off the tailgate. Unplug the 3rd brake connection. With the 3rd brake light unplugged, remove the harness from the vehicle.

STEP 2

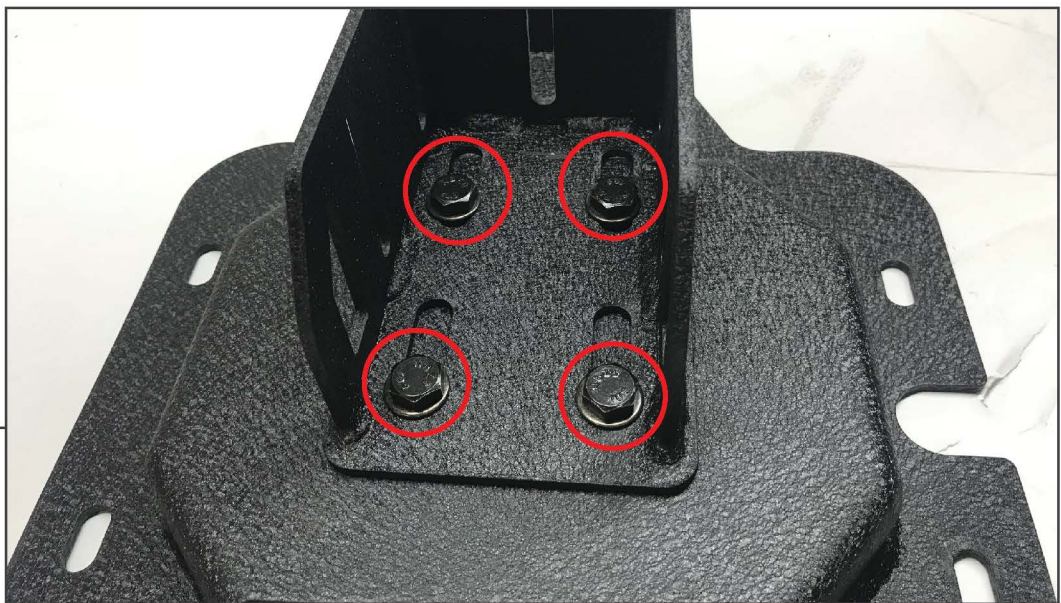


Remove the (8) 13mm bolts holding the carrier tailgate.



STEP 3

Using a soft pry tool, remove the tailgate vent. There are (3) tabs across the top, depress the tabs and pull the vent from the vehicle.



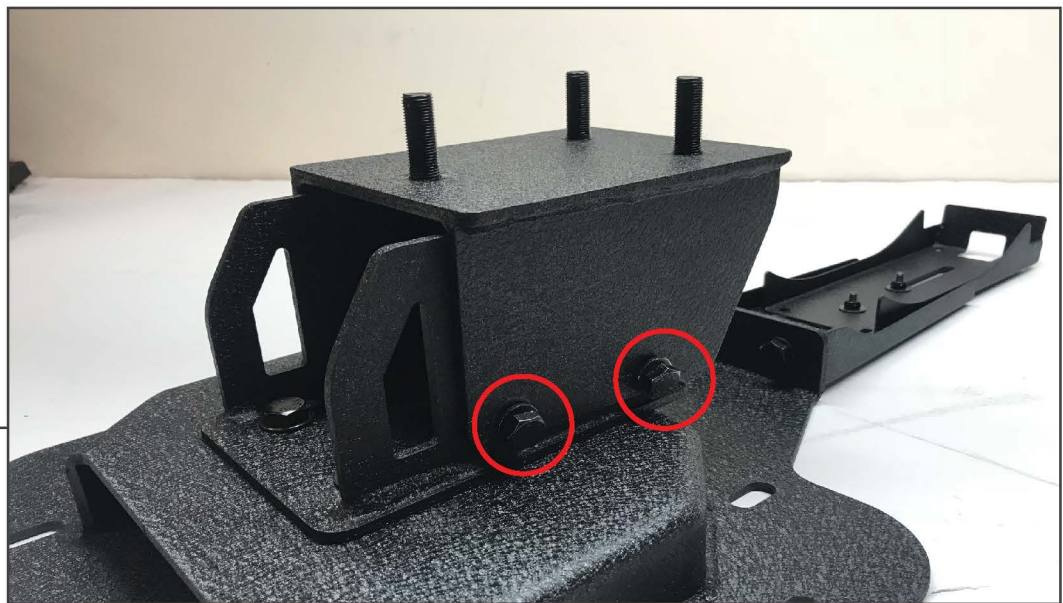
STEP 4

Install the intermediate plate onto the base plate using provided (4) M12x1.75 40mm bolts, and (4) M12 washers. The slots in the intermediate plate will allow you to raise and lower the tire on the mount.



STEP 5

Using (2) M10x1.50 20mm bolts, (4) M10 washers, and (2) M10 lock nuts, install the lower 3rd brake light bracket to the base plate. Once secured, attach the upper 3rd brake light bracket to the lower using (2) M6x1.00 20mm Allen bolts, (4) M6 washers, and (2) M6 lock nuts.



STEP 6

Install the stud plate onto the intermediate plate using (5) M10x1.50 20mm bolts, (10) M10 washers, and (5) M10 lock nuts. Adjust the carrier mount in and out depending on your wheels offset.

STEP 7



Remove the (2) 3rd brake light screws from the original tire mount using a Phillips screwdriver. Once removed, reinstall the light and screws into the new mount.

STEP 8



Thoroughly clean the paint surrounding the vent removed in Step 3. Ensure the painted and surround areas are dry prior to apply the provided foam over the exposed vent hole.

STEP 9



Next, install the carrier mount assembly to the tailgate using the original (8) 13mm bolts. Once the tire mount is secured to the tailgate, plug the 3rd brake light back into the vehicles harness and reinstall the plastic trim panel.

STEP 10



Reinstall spare tire to tire mount using (3) provided 19mm lug nuts and torque to 95ft/lbs.

Installation is now complete.