



SPARE TIRE DELETE

(1997-2006 WRANGLER TJ)

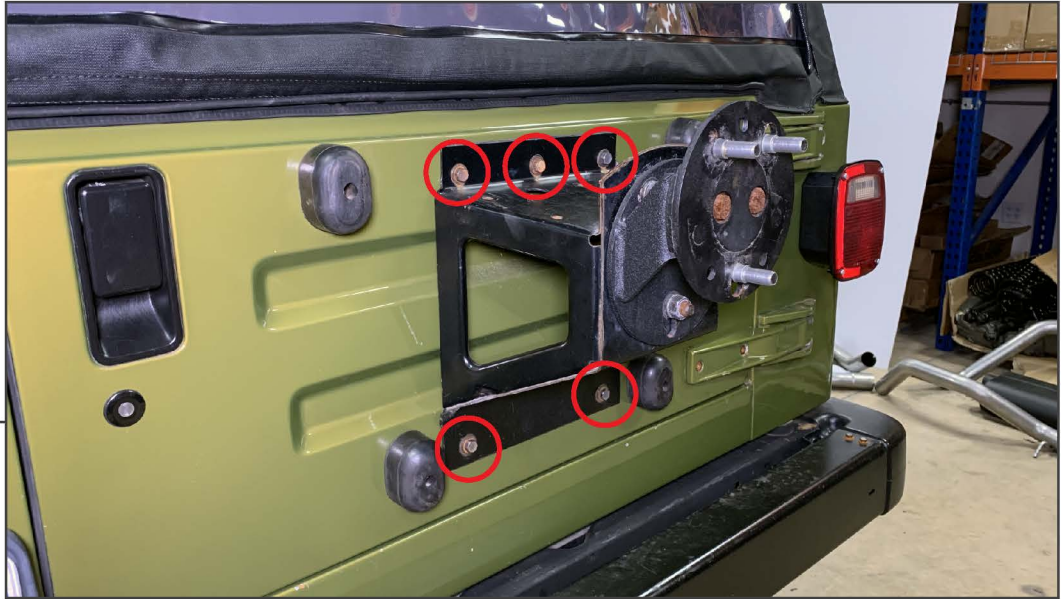
INSTALLATION INSTRUCTIONS

CONTENTS

(1) Spare Tire Delete Panel

TOOLS REQUIRED

1/2" Socket
T-27 Torx Socket
Ratchet
Exterior Detailer
Microfiber Cloth



STEP 1

Remove the spare tire from the vehicle. Locate and remove (5) bolts from the spare tire carrier using a 1/2" socket. Set the spare tire carrier aside.

Note: (5) 1/2" bolts will be reused.



STEP 2

Remove the (4) rubber tire bushings using a T-27 Torx socket.

Note: (2) Torx bolts will be reused.

**STEP 3**

Clean the tailgate of the vehicle using exterior detailer and a microfiber cloth. Install the original (2) T-27 Torx bolts into the original upper spare tire bushing holes, tighten until secure.

**STEP 4**

Align the spare tire delete panel to the vehicle, and secure into place using the (5) original 1/2" bolts. Tighten until secure.

Installation is now complete.