



HD TIRE CARRIER FOR OEM TAIL GATE

(2007-2018 WRANGLER JK)

INSTALLATION INSTRUCTIONS

CONTENTS

(1) Tire Carrier	(2) M12x1.75 x 70mm Bolts
(1) Tailgate Panel	(4) M12x1.75 x 35mm Bolts
(2) Hinge Brackets	(12) M12 Flat Washers
(4) Tire Carrier Bushings	(2) M12 Locking Nuts
(1) Tire Carrier Retainer	(4) M12 Nuts
(1) Heim Joint Latch	(2) M10x1.50 x 45mm Bolts
(2) Tailgate Hinge Spacers	(4) M10 Flat Washers
(4) Nylon Bushing Shims	(2) M10 Locking Nuts
(2) Steel Bushing Shims	(2) M6x1.00 x 25mm Bolts
(3) Lug Nuts	(2) M6 Lock Washers
(2) M14 x 110mm Bolts	(4) M6 Flat Washers
(4) M14 Flat Washers	(2) M6 Nuts
(2) M14 Locking Nuts	

TOOLS REQUIRED

10mm, 13mm, 18mm, 19mm, 21mm,
22mm Sockets
T-50 Torx Socket
Ratchet
Plastic Pry Tool
Rubber Mallet

SKU # J164367



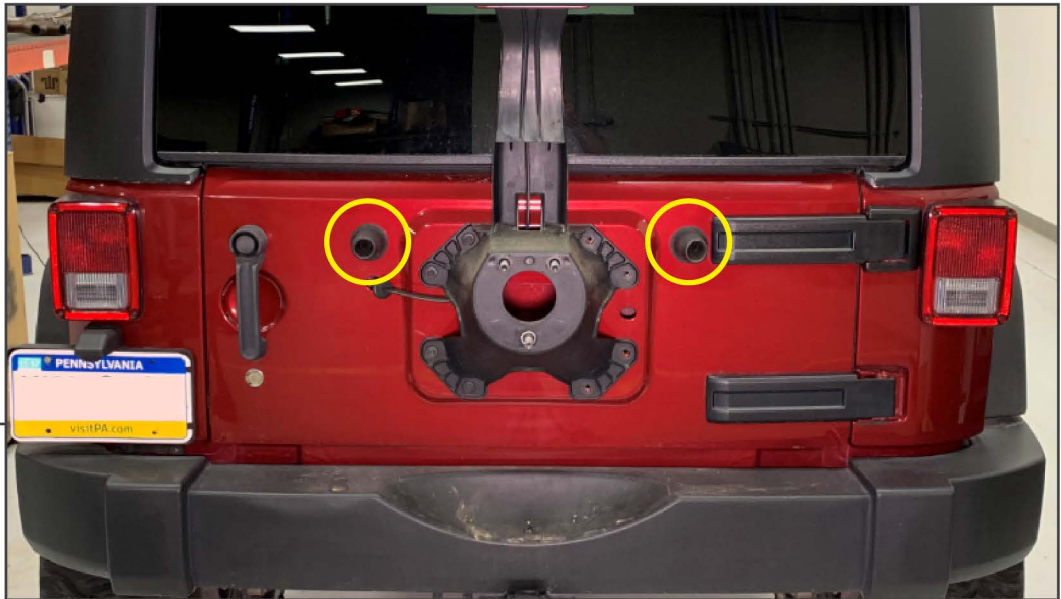
STEP 1

Gently pry along the (2) metal clips to remove the plastic trim cover from the tailgate. Un-plug the third brake light connector from the vehicle.



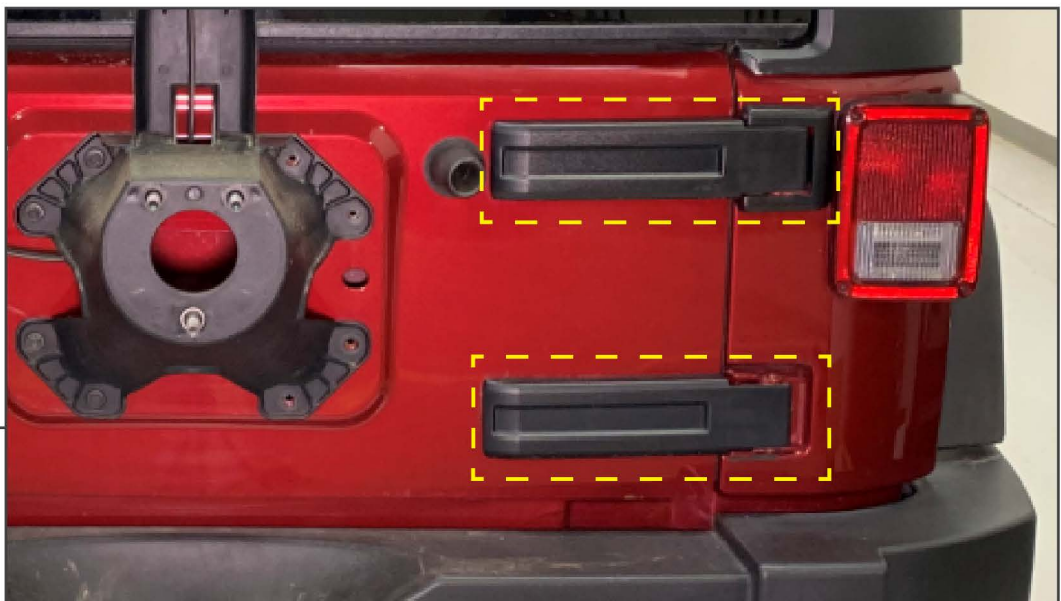
STEP 2

Dislodge the third brake light wiring harness grommet in the tailgate. Remove (8) 13mm bolts from the spare tire carrier. Remove the tire carrier and set aside.



STEP 3

Remove the (2) rubber spare tire bumpers from the tailgate by firmly pulling away while twisting outward.



STEP 4

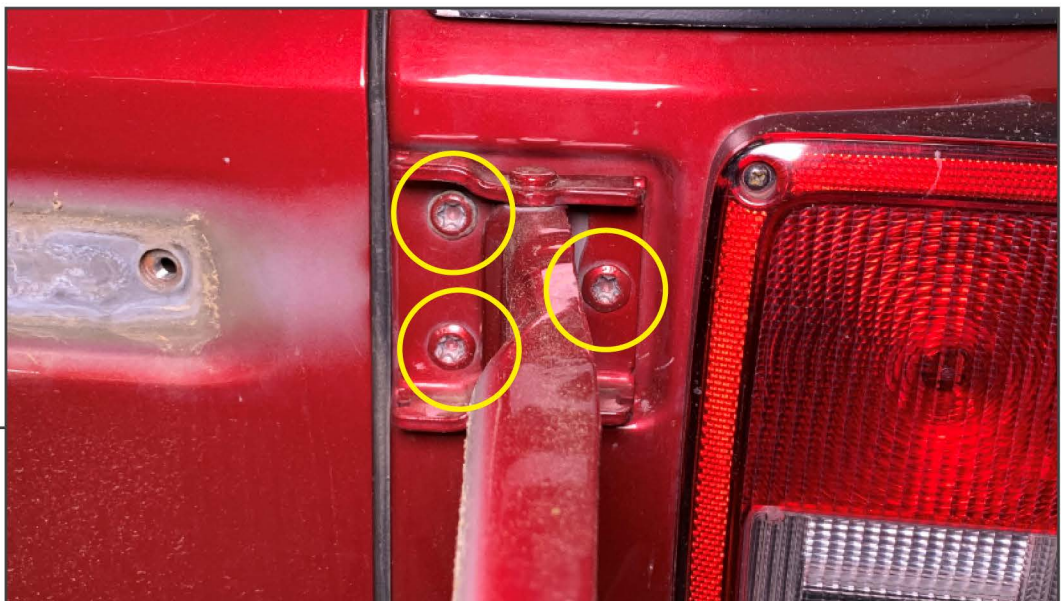
Remove the tailgate hinge covers by gently prying using a plastic pry tool.



STEP 5

Ensure the tailgate is closed. Remove (4) 13mm bolts from the tailgate hinges.

Note: Do not open the tailgate.



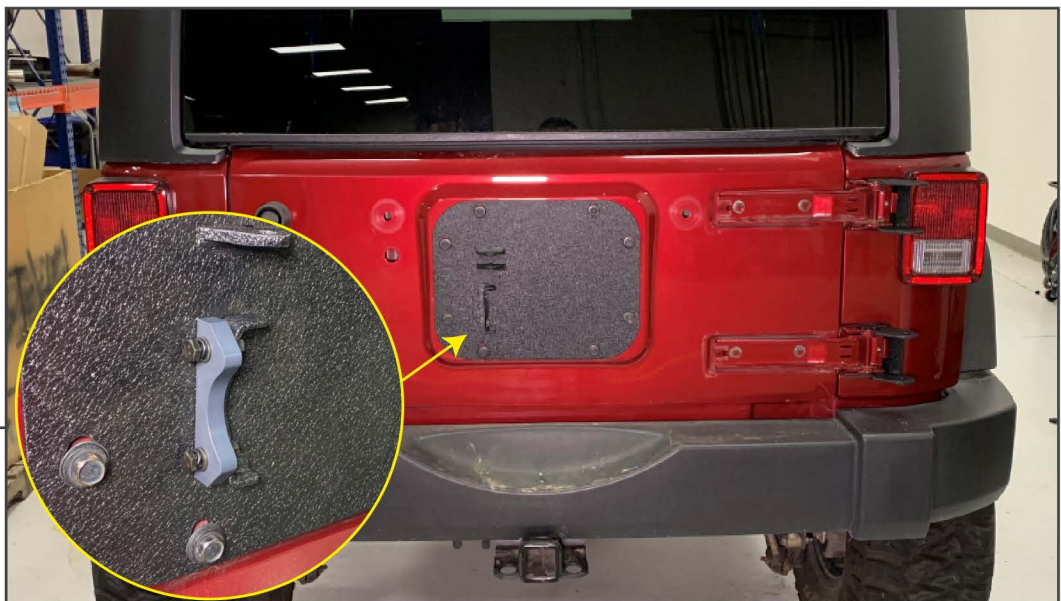
STEP 6

Remove (3) T-50 Torx screws from each hinge to remove the hinge assembly from the vehicle.



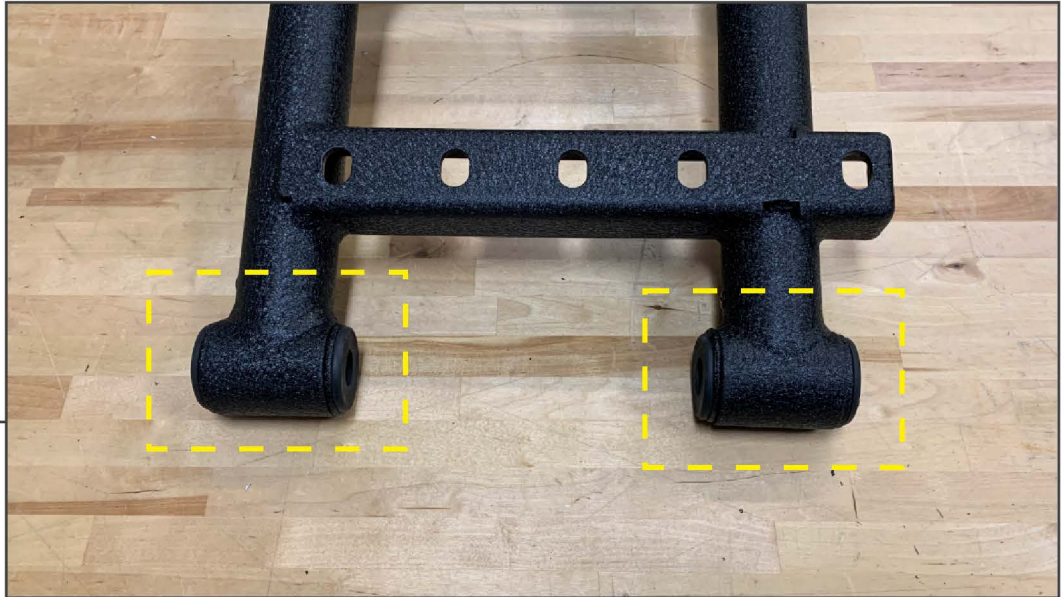
STEP 7

Place (1) provided hinge bracket under each vehicle hinge assembly. Secure the brackets and hinges using original hinge assembly hardware. Install (1) hinge spacer under each bracket attaching the hinge to the tailgate, then tighten using original hardware. Re-install hinge covers if desired.



STEP 8

Secure the (1) tailgate panel to the tailgate using the original (8) 13mm bolts. Install the tire carrier retainer using (2) M6x1.00 x 25mm bolts, (2) M6 lock washers, (4) M6 flat washers, and (2) M6 nuts.



STEP 9

Install (4) tire carrier bushings into the tire carrier.



STEP 10

Insert the tire carrier arm into the vehicle mounting brackets. Secure the tire carrier to the brackets using (2) M14 x 110mm bolts, (4) M14 flat washers, and (2) M14 locking nuts.

Note: Use the included shims to ensure a tight fit, if necessary.

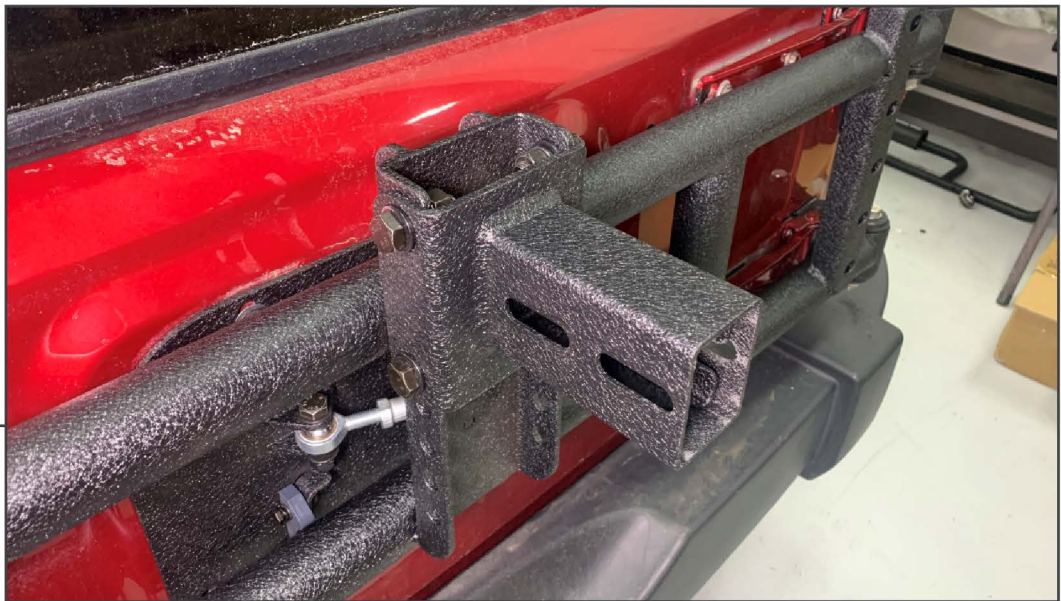
STEP 11



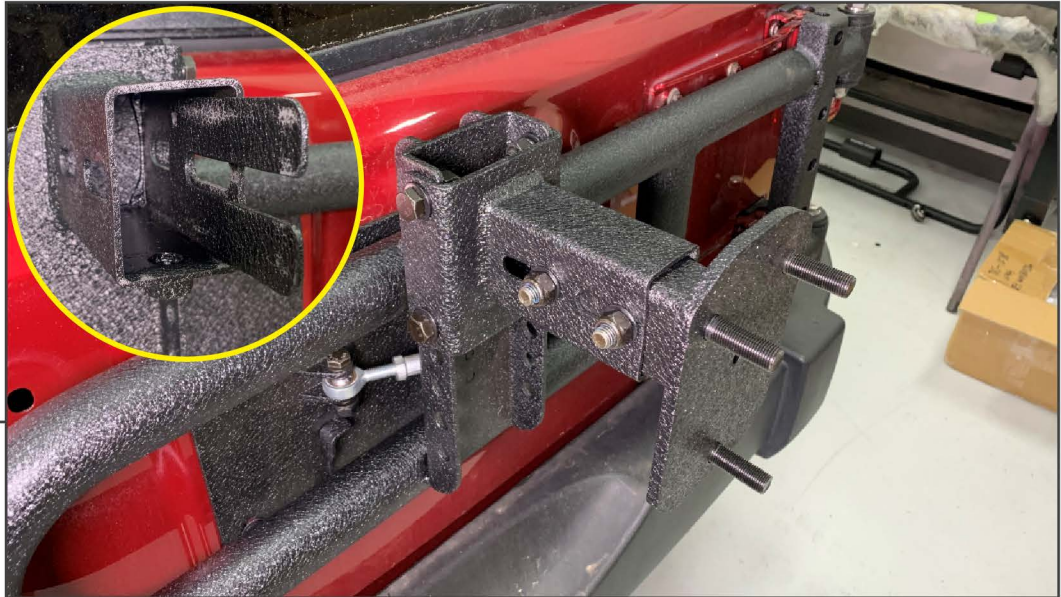
With the tailgate and tire carrier open, install the (1) heim joint latch to connect the tailgate with the tire carrier using (2) M10x1.50 x 45mm bolts, (4) M10 flat washers, and (2) M10 locking nuts.

Note: Adjust the latch until the tire carrier is tight with the tailgate closed.

STEP 12



Mount the spare tire bracket onto the tire carrier using the appropriate mounting holes. Secure the bracket to the tire carrier using (4) M12x1.75 x 35mm bolts, (4) M12 lock washers, (8) M12 flat washers, and (4) M12 nuts.



STEP 13

Install the spare tire mount to the tire carrier using (1) spare tire mount spacer, (2) M12x1.75 x 70mm bolts, (4) M12 flat washers, and (2) M12 locking nuts. Lock the mount into position using (1) M12x20mm bolt on the bottom of the spare tire bracket.

Note: The mount is adjustable for various wheel and tire options.



STEP 14

Mount the spare tire to the vehicle using the (3) provided lug nuts. Tighten to OEM specifications.

Installation is now complete.