



EXTREME HD REAR ADVENTURE DOORS

(2007-2018 WRANGLER JK)

INSTALLATION INSTRUCTIONS

CONTENTS

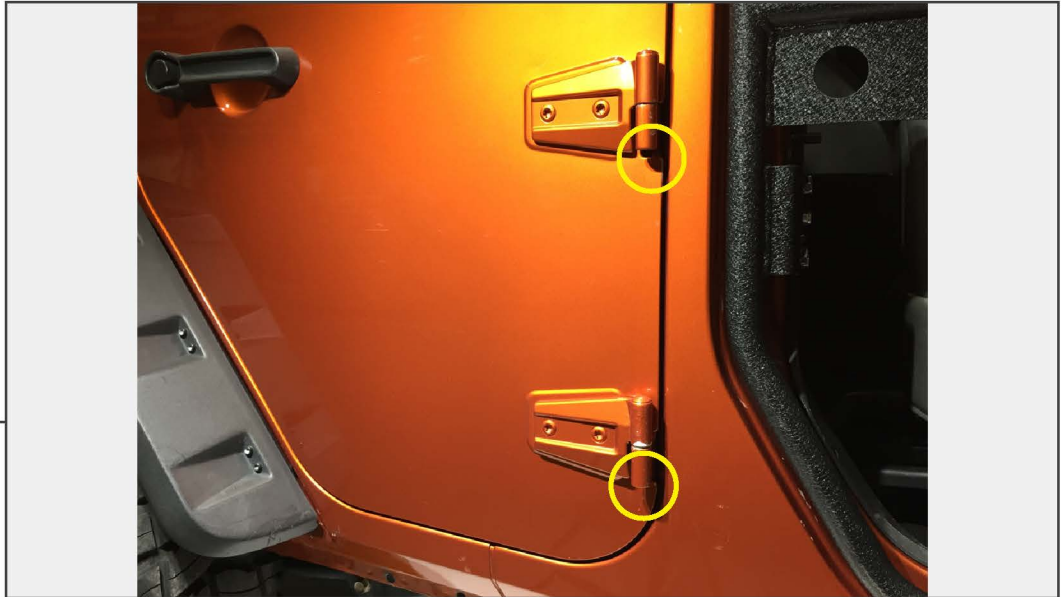
- (1) LH Rear Door
- (1) RH Rear Door
- (2) Door Latches
- (4) M8 x 1.25 Bolts
- (4) M8 Nuts
- (4) M8 Lock Nuts
- (12) M8 Flat Washers
- (4) M8 Lock Washers

TOOLS REQUIRED

- Phillips Screwdriver
- T-50 Torx Socket
- Socket/Wrench Set
- Ratchet
- Rubber Mallet
- Panel Removal Tool

SKU # J157746

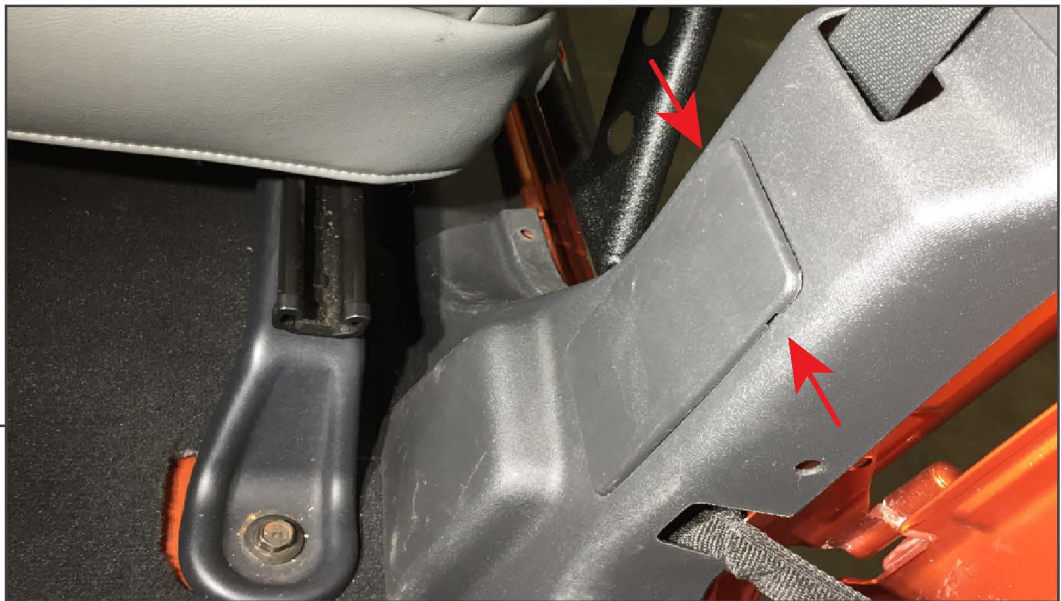
STEP 1



Remove the T-50 Torx nut from the bottom of each door hinge.

Note: T-50 Torx nuts will not be re-used.

STEP 2



Slide the front seat forward to access the interior trim panel. Using a panel removal tool, remove the plastic panel covering the door components.

Note: The panel has indents for removal. Insert the pry tool at the indented locations.



STEP 3

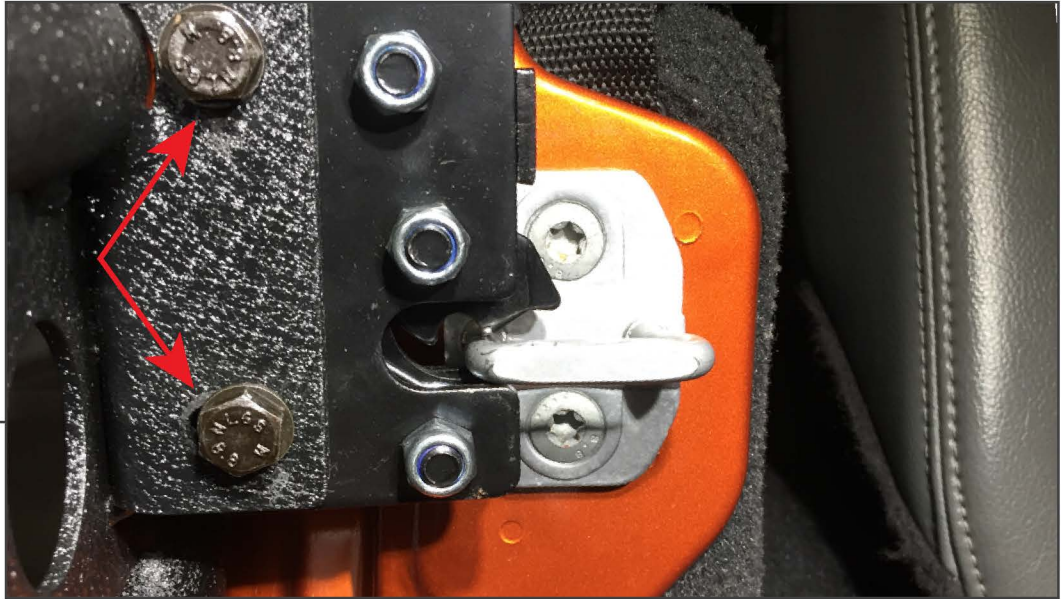
Roll down the door window for ease of handling. Locate the door wiring harness and door strap. Slide the red locking tab, then depress the black tab to disconnect the electrical connection. Lift the hinge strap from the chassis mount. With a firm grip, lift and remove the door from the vehicle.



STEP 4

Install the new door to the vehicle hinges. Use (1) M8 nut and (1) M8 flat washer per hinge to secure the door to the hinges.

Note: Using a rubber mallet may be necessary to fully seat the door.



STEP 5

Loosely install the door latch to the door using (2) M8 bolts, (2) M8 lock washers, (2) M8 flat washers, and (2) M8 nuts. Align the door latch with the vehicle striker. Once aligned, tighten the latch hardware.

Note: Spending additional time aligning the latch to the striker will result in smoother opening and closing of the door.



STEP 6

Remove the (2) Phillips screws from the door strap mount. Install the door strap to the door and re-secure the Phillips screws. Install the door strap onto the chassis mounting point. Re-install the previously removed interior trim panel.



STEP 7

Repeat steps 1-6 to the remaining rear door.

Installation is now complete.