



# EXTREME HD FRONT ADVENTURE DOORS

(2007-2018 WRANGLER JK)

---

## INSTALLATION INSTRUCTIONS

### CONTENTS

---

- (1) LH Front Door
- (1) RH Front Door
- (2) Door Latches
- (2) Mirror Mounts
- (4) M10 x 1.50 Bolts
- (4) M10 Flat Washers
- (4) M10 Lock Washers
- (2) M8 x 1.25 Mirror Bolts
- (4) M8 x 1.25 Bolts
- (14) M8 Flat Washers
- (6) M8 Lock Washers
- (4) M8 Lock Nuts
- (4) M8 Nuts
- (1) 5mm Allen Key

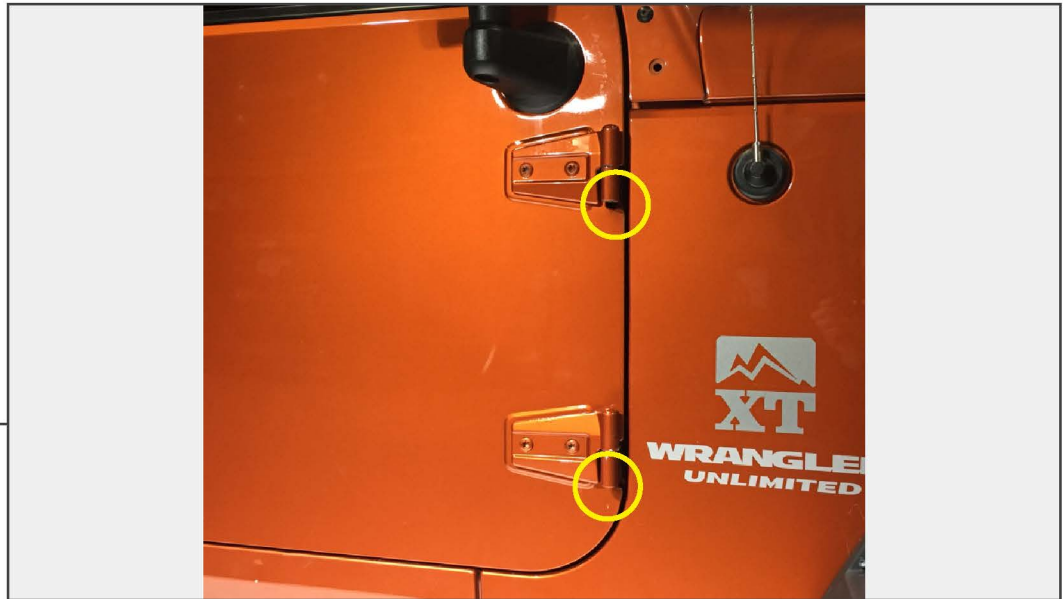
### TOOLS REQUIRED

---

- Phillips Screwdriver
- T-50 Torx Socket
- Socket/Wrench Set
- Allen Sockets
- Ratchet
- Rubber Mallet
- Panel Removal Tool

SKU # J157745

## STEP 1



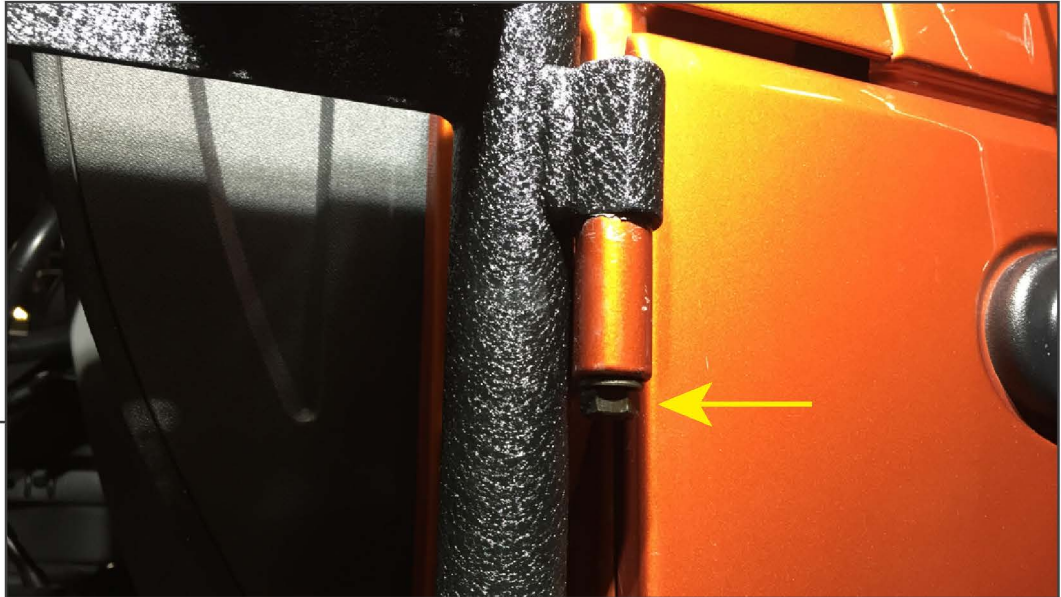
Remove the T-50 Torx nut from the bottom of each door hinge.

**Note:** T-50 Torx nuts will not be re-used.

## STEP 2



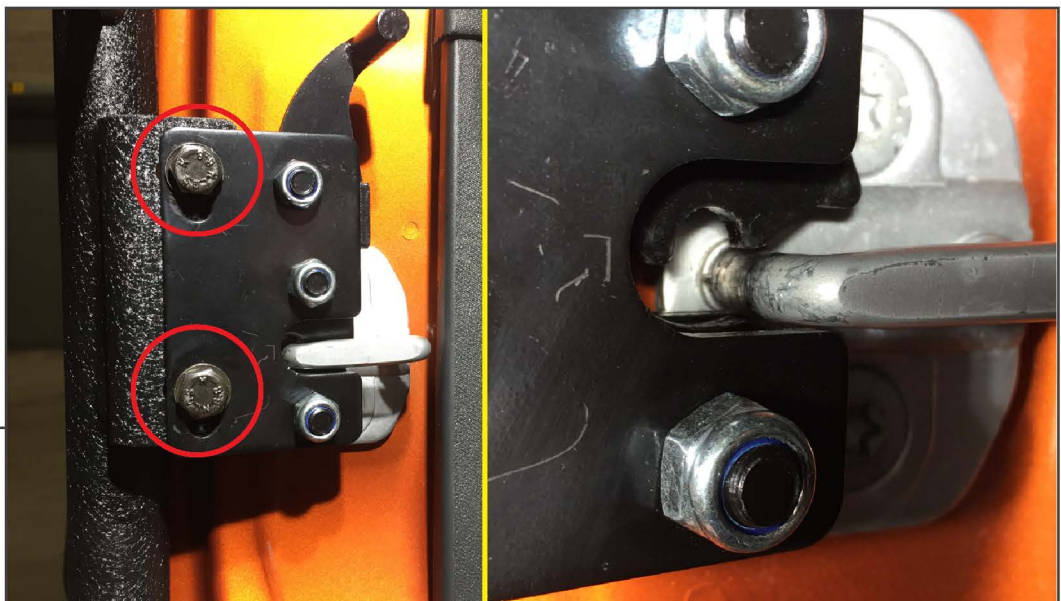
Roll down the door window for ease of handling. Access the door wiring harness by following the lead from the door towards the dashboard. Slide the red locking tab, then depress the black tab to disconnect the electrical connection. Lift the hinge strap from the chassis mount. With a firm grip, lift and remove the door from the vehicle.



## STEP 3

Install the new door to the vehicle hinges. Use (1) M8 nut and (1) M8 flat washer per hinge to secure the door to the hinges.

**Note:** Using a rubber mallet may be necessary to fully seat the door.



## STEP 4

Loosely install the door latch to the door using (2) M8 bolts, (2) M8 lock washers, (2) M8 flat washers, and (2) M8 nuts. Align the door latch with the vehicle striker. Once aligned, tighten the latch hardware.

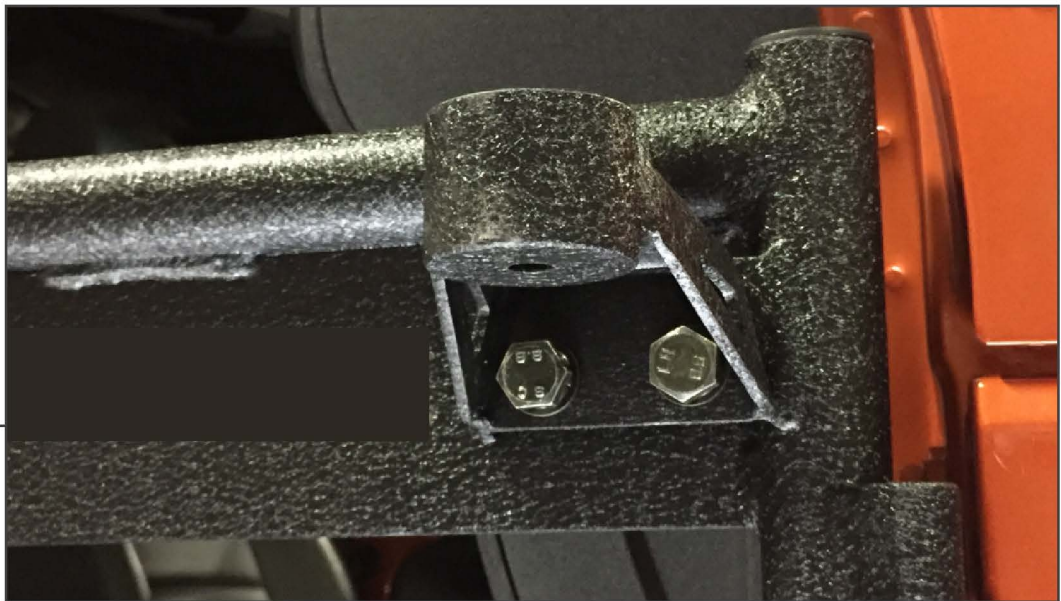
**Note:** Spending additional time aligning the latch to the striker will result in smoother opening and closing of the door.





## STEP 5

Remove the (2) Phillips screws from the door strap mount. Install the provided (1) door strap to the door and re-secure the Phillips screws. Install the door strap onto the chassis mounting point.



## STEP 6

Install the mirror mount to the door using (2) M10 bolts, (2) M10 lock washers, and (2) M10 flat washers.

## STEP 7



Remove the original mirror from the original mirror mount by removing (1) T-50 Torx screw. Install the original mirror to the new door using (1) M8 Allen bolt, (1) M8 lock washer, and (1) M8 flat washer.

## STEP 8



Repeat steps 1-7 to the remaining front door.

Installation is now complete.