



HD TIRE CARRIER

(2007-2018 WRANGLER JK)

INSTALLATION INSTRUCTIONS

CONTENTS

- (2) Hinge Mounts
- (1) Tire Carrier Bracket
- (1) Tire Carrier Inner Mount
- (1) Tire Carrier Mount
- (1) Foam Pad
- (1) 3rd Brake Light Mount Upper
- (1) 3rd Brake Light Mount Lower
- (2) Hinge Pins w/ C-Clips
- (1) Thin Spacer
- (1) Thick Spacer
- (1) Hardware Kit

TOOLS REQUIRED

- Socket Set
- Allen Sockets
- T-50 Torx
- Trim Panel Removal Tool
- Painters Tape
- Tape Measure
- Straight Edge
- Wood Shims
- Marker

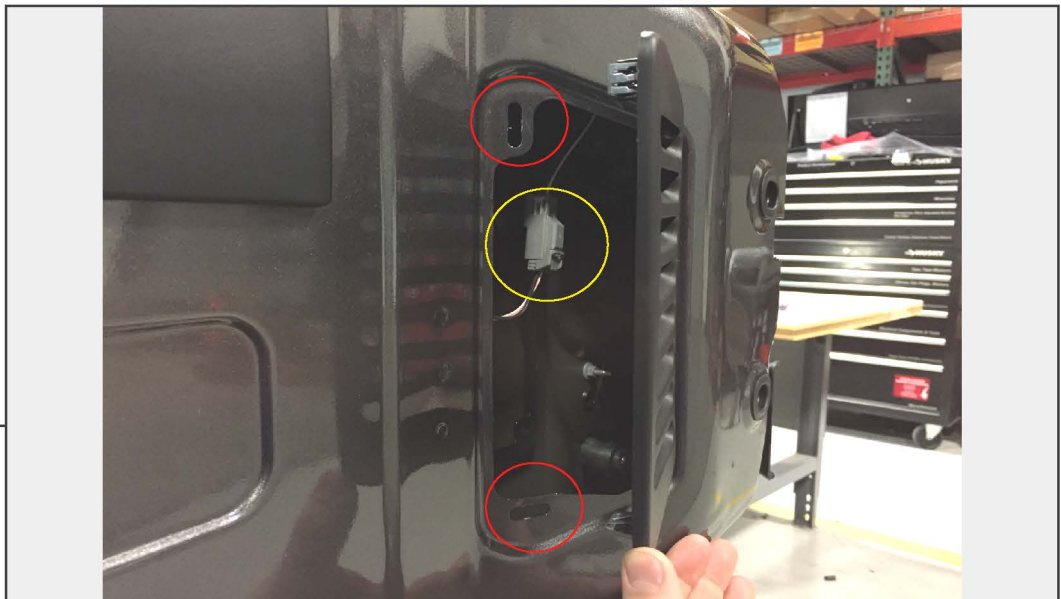
SKU # J157736

STEP 1

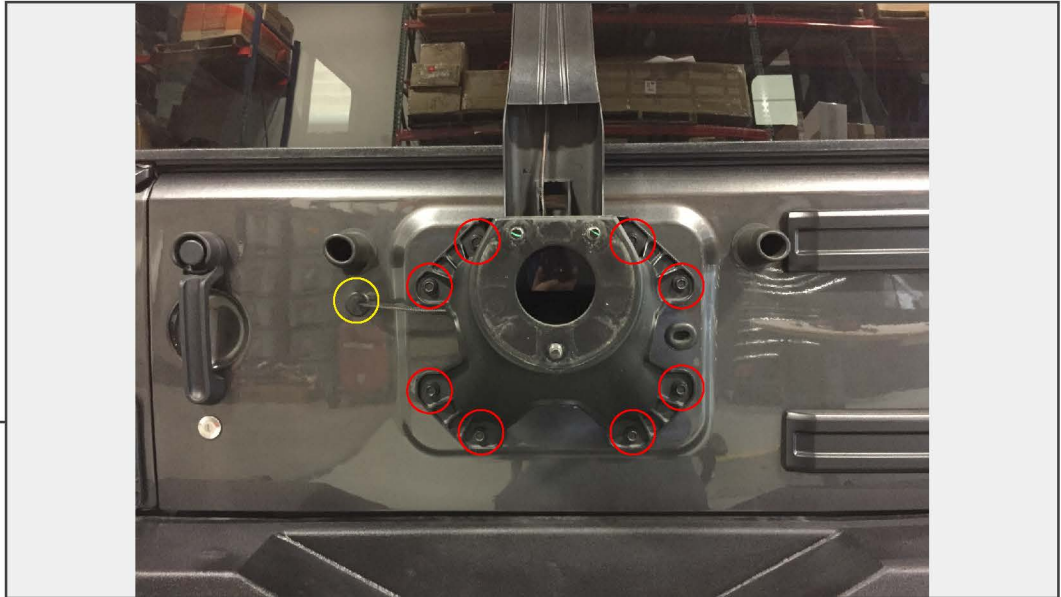


Remove the spare tire from the vehicle.

STEP 2

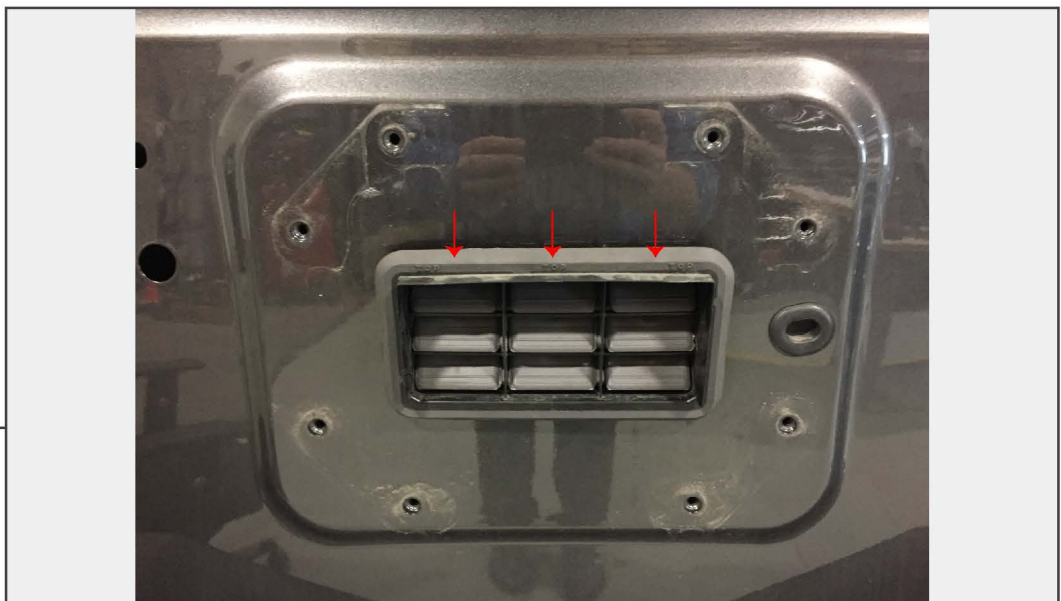


Open the tailgate and remove the vent cover with a trim panel removal tool. Unclip the brake light wiring harness, but do not reinstall the vent cover. Close the tailgate.



STEP 3

Remove the (8) 13mm bolts holding the factory tire carrier in place. Remove the 3rd brake light wiring grommet to completely remove the 3rd brake light harness from vehicle.



STEP 4

Using a trim panel removal tool, remove the factory air vent.

STEP 5



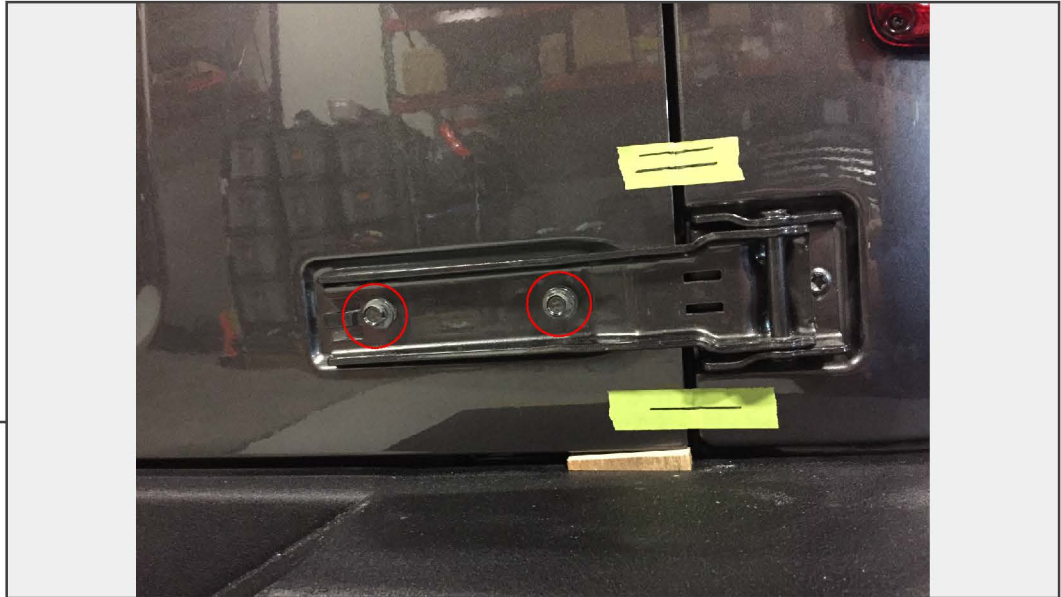
Apply painters tape across the parting line between the tailgate and quarter panel. Mark the tailgate in several locations using a straight edge. Using a razor blade, cut the tape so the tailgate can be removed without pulling the tape off the quarter panel. These marked lines will aid in tailgate alignment when fitting the new tire carrier.

STEP 6



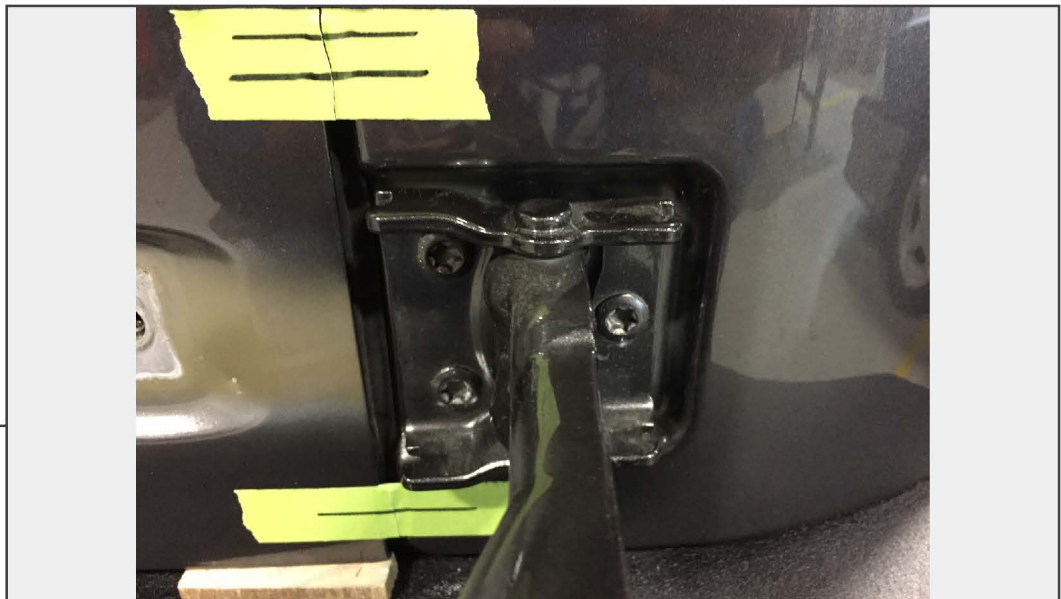
Shim the bottom of the tailgate to prevent it from sagging when the hinge bolts are removed.

STEP 7



Remove the plastic hinge covers followed by (2) 13mm bolts securing the hinge each hinge to the tailgate.

STEP 8



With the hinges unbolted from the tailgate, open the hinge to access the (3) T-50 Torx bit bolts and remove hinges.

STEP 9



Attach the supplied hinge mounts using the factory T-50 Torx bolts. Tighten the bolts down in triangular pattern, tightening each bolt a little each time, and the hinge will self center.

STEP 10



Install the foam cover for the air vent hole. Remove the double sided tape backing on all (4) corners. Install the foam to the tire carrier bracket.



STEP 11

Install the tire carrier bracket to the hinges using the supplied hinge pins. Once installed, secure the hinge pins using the provided c-clips.

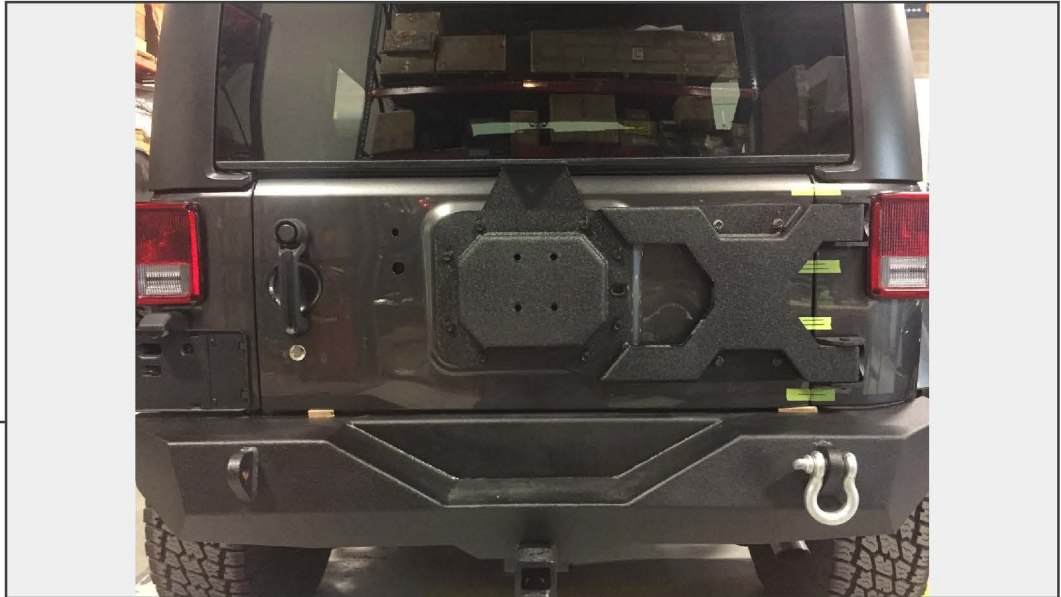
Note: A rubber mallet may be needed to seat the hinge pins.



STEP 12

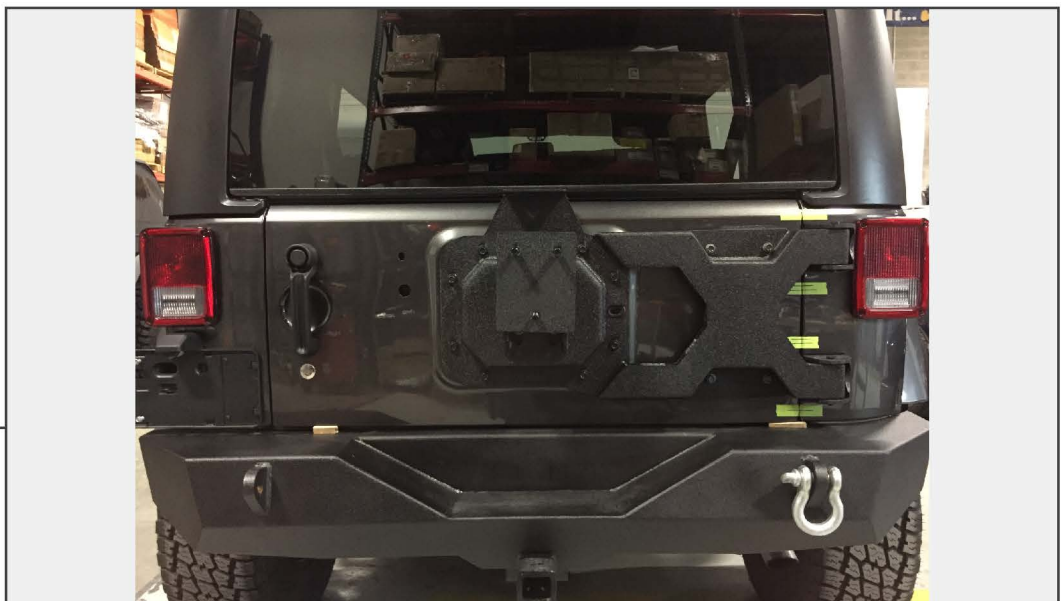
Place the thin spacer behind the upper tire carrier bracket mount, and the thick bracket behind the lower tire carrier bracket mount.

STEP 13



Use the factory hardware to secure the tire carrier to the tailgate. Ensure the reference marks made in step 5 are still aligned prior to tightening the tire carrier bracket.

STEP 14



Mount the tire carrier bracket to the tire barrier base using the (4) provided bolts and washers.

STEP 15



Next, loosely install the tire mount with the (3) threaded studs. The location of the mount will need to be measured and adjusted depending on the backspacing of your wheel and tire. Measure the backspacing by placing a straight edge across the tire. Then, measure to the mounting hub of the tire.

STEP 16



Place the straight edge on the face of the tire mount, slide the carrier in or out to match the backspacing measured in Step 15. Set the tire mount 0.25" less than the backspacing measurement, which will ensure the tire fits tight against the tire carrier assembly.

STEP 17



Loosely install the upper and the lower half together using the supplied Allen bolts, washers, and lock nuts.

STEP 18



Remove the factory 3rd brake light from the factory tire carrier bracket.

STEP 19

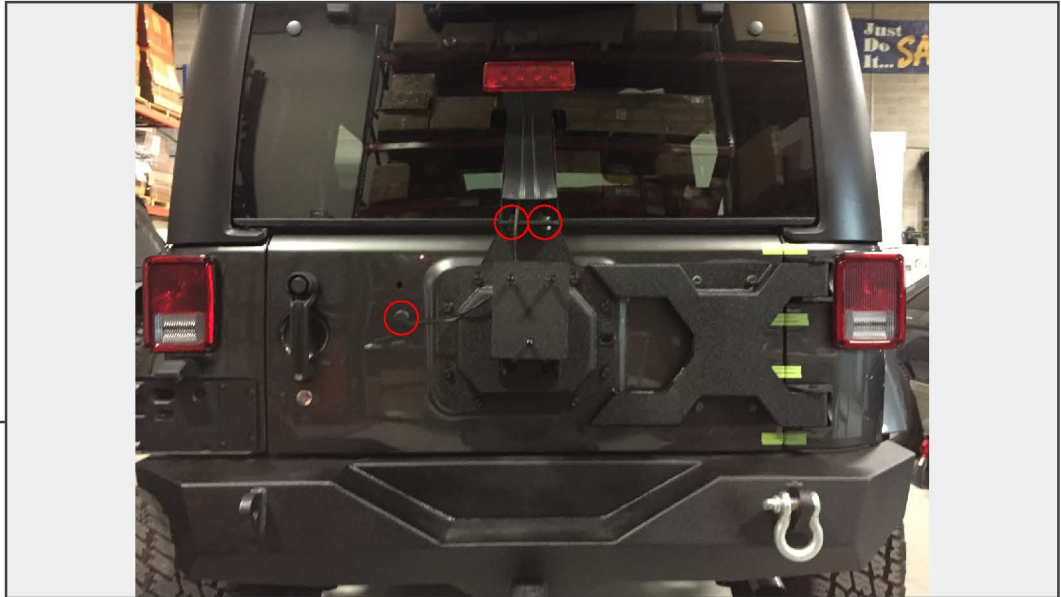


Unclip the wiring harness from the factory bracket and pull to the side.

STEP 20



Place the 3rd brake light in the bracket. With the tire mounted, set the brake light height. Tighten the upper and lower brackets together. Then, secure the factory 3rd brake light in the bracket using the factory screws.



STEP 21

Remove the tire and mount the 3rd brake light bracket to the carrier assembly. Ensure all bolts are tight. Route the brake light wiring back into the car. Plug the brake light in and re-install the vent cover.

Installation is now complete.