

---

# PEACE LED TIRE COVER

(2007-2018 WRANGLER JK)

---

## INSTALLATION INSTRUCTIONS

### CONTENTS

---

- (1) Tire Cover
- (1) Wiring Harness
- (2) Quick Splice Scotchlok Connectors
- (2) Spade Connectors

### TOOLS REQUIRED

---

- Pry Tool
- 10mm Socket
- Socket Wrench
- Pliers

SKU # J142744-J142747

---

**STEP 1**



Begin by unzipping the tire cover to locate the hardware pack. Zip up the cover and place on the tire.

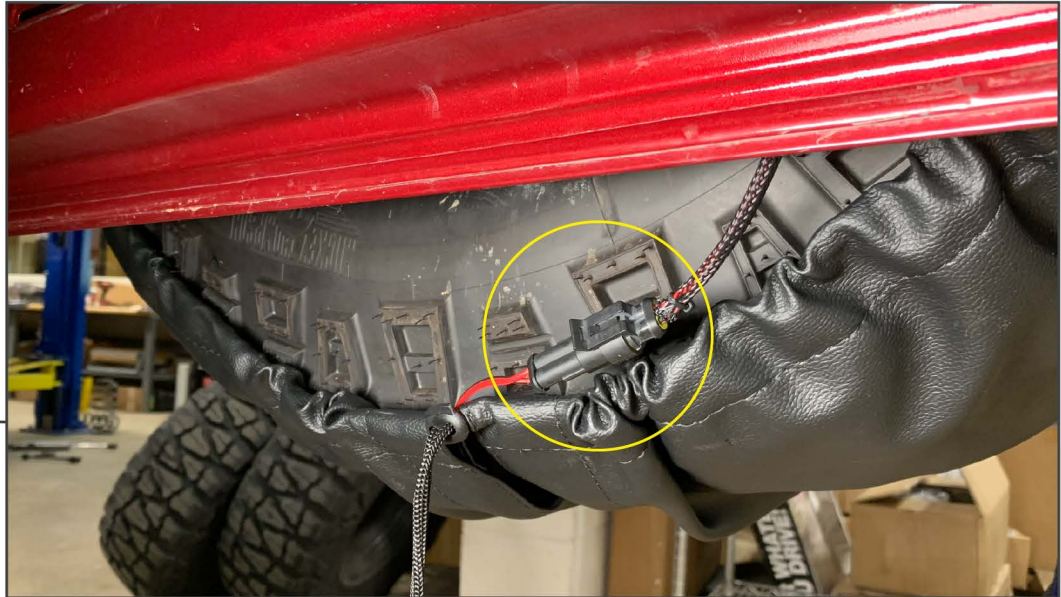
**STEP 2**



Center the cover on the tire, pull the draw string tight securing the cover to the tire.

---

**STEP 3**



Connect the supplied wiring harness to the plug located at the bottom of the tire cover.

---

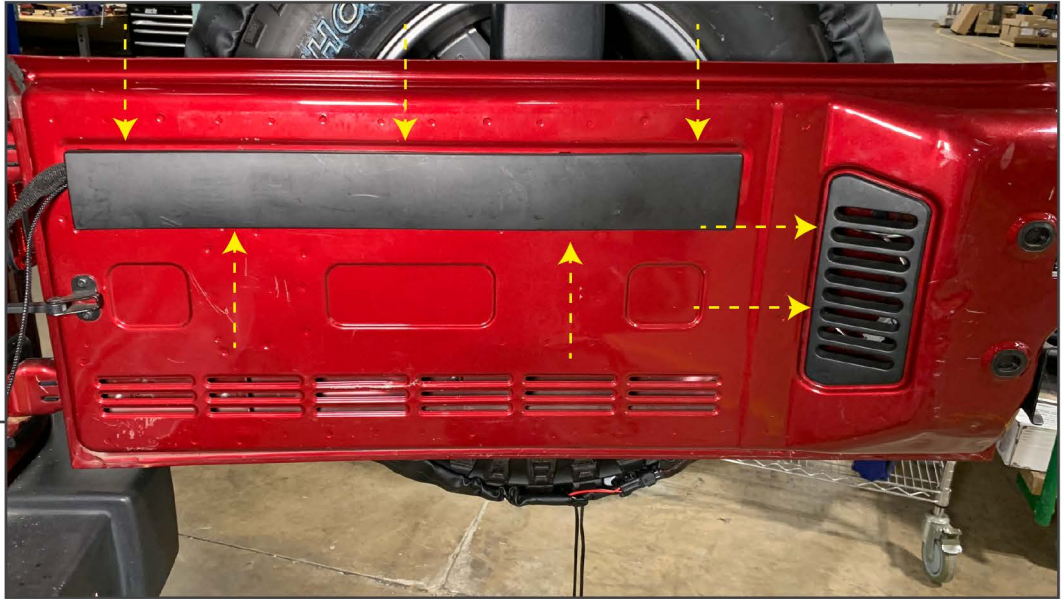
**STEP 4**



Puncture a small hole in the 3rd brake light grommet. Feed the wiring harness through the hole into the tail gate.

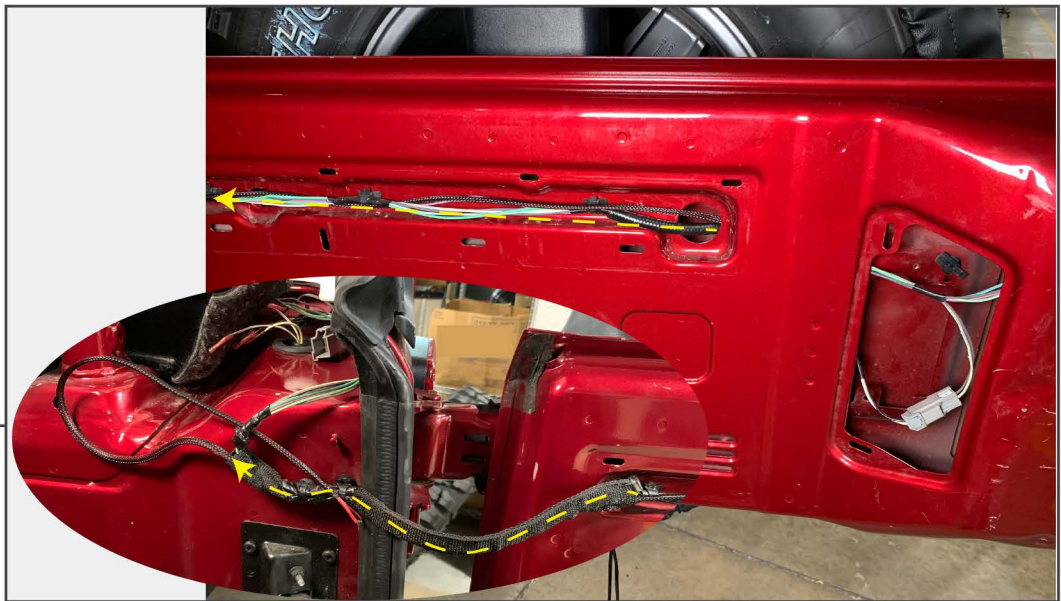
---

**STEP 5**



Using a soft pry tool, remove the (2) interior trim panels.

**STEP 6**



Locate and feed the wiring harness through the tailgate. Feed the wiring harness through the factory wire sheathing into the interior of the vehicle.

---

**STEP 7**



Using a soft pry tool, remove the seat belt trim bezel.

**STEP 8**



Using a T30 Torx bit, remove the (2) screws securing the trim panel to the vehicle.

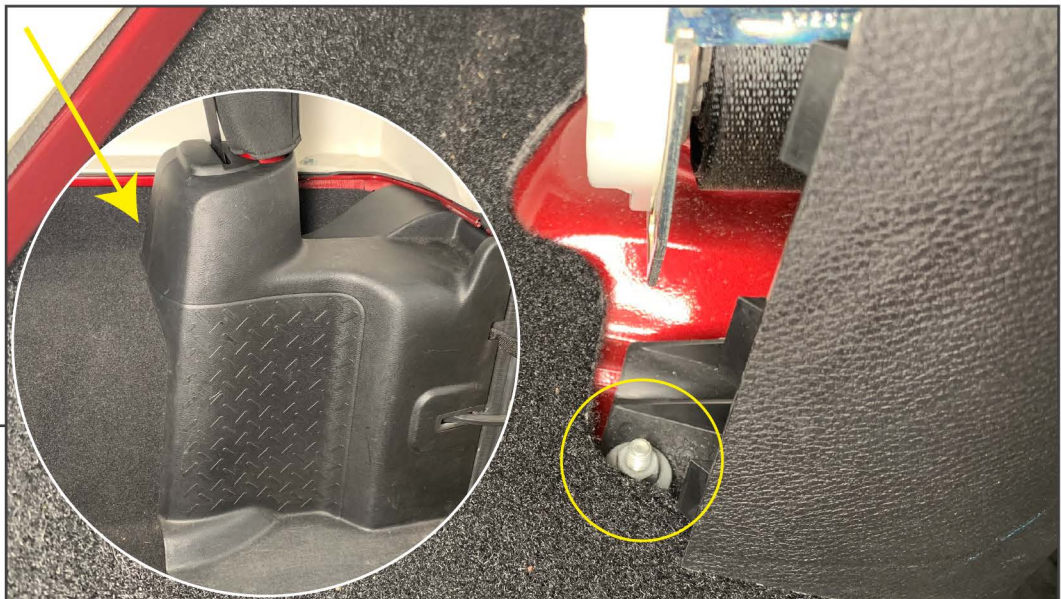
---

**STEP 9**



Carefully pry the trim panels apart. Remove the smaller panel to access the remaining 10mm nut.

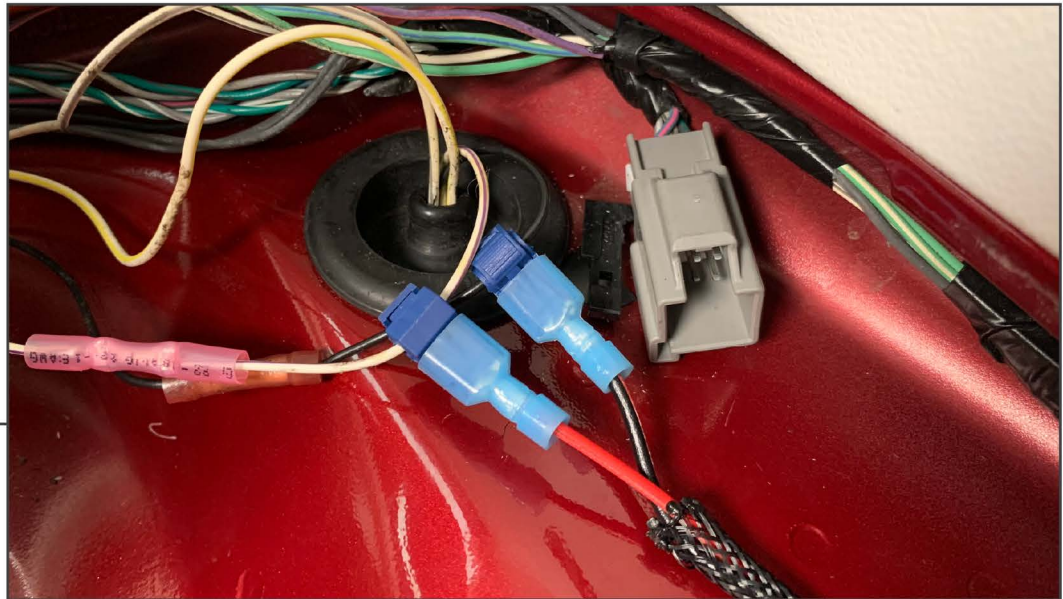
**STEP 10**



Locate and remove the 10mm nut. Then remove the panel from the vehicle to expose the tail light wiring.

---

**STEP 11**



Locate the tail light wiring grommet. The following diagram will be used to connect the LED tire cover to the vehicles running lights. When the running lights are on, the cover will be illuminated. Use a test light to confirm wiring prior to splicing in the connections. Then, use the supplied spade and Scotchlok connectors finalize the wiring.

- |                       |   |                          |
|-----------------------|---|--------------------------|
| <b>LED Tire Cover</b> | - | <b>Tail Light Wiring</b> |
| Black                 | - | Black                    |
| Red                   | - | White/Purple             |

---

**STEP 12**



Re-install the interior trim panels in reverse order to complete the installation.