



---

# CARGO CAPE

(1987-2020 WRANGLER YJ, TJ, JK, JL)

---

## INSTALLATION INSTRUCTIONS

### CONTENTS

---

(1) Cargo Cape

### TOOLS REQUIRED

---

N/A

SKU # J142016

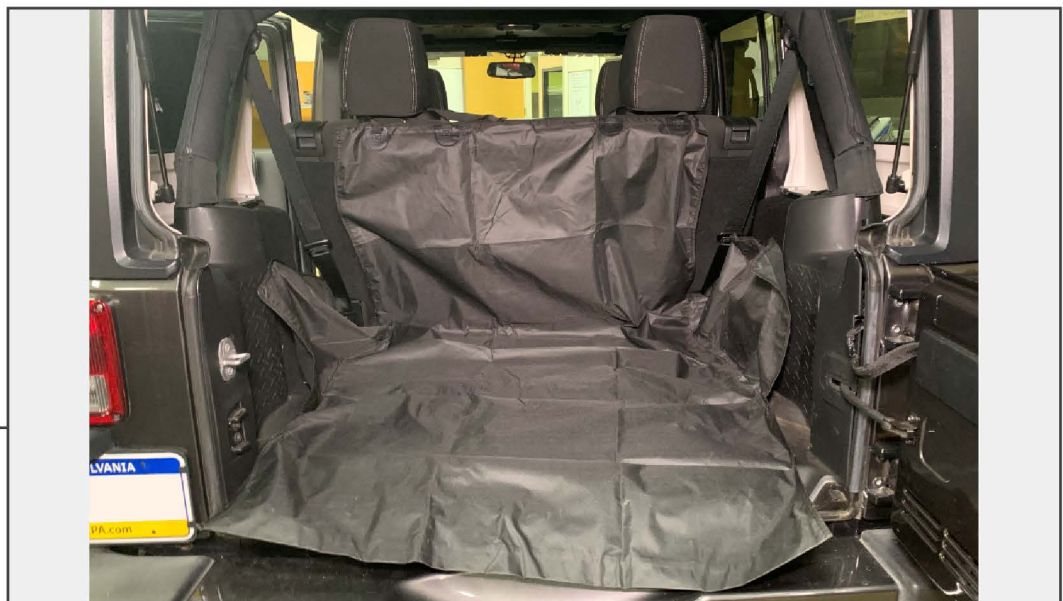


### STEP 1



Drape the cargo cape over the rear cargo area of the vehicle. Using the (2) provided straps, secure the cargo cape to the rear seat headrests. Tighten until secure.

### STEP 2



Spread the cargo cape evenly along the cargo area.

Installation is now complete.