



DOOR HANDLE INSERTS; RED

(2007-2018 WRANGLER JK 4 DOOR)

INSTALLATION INSTRUCTIONS

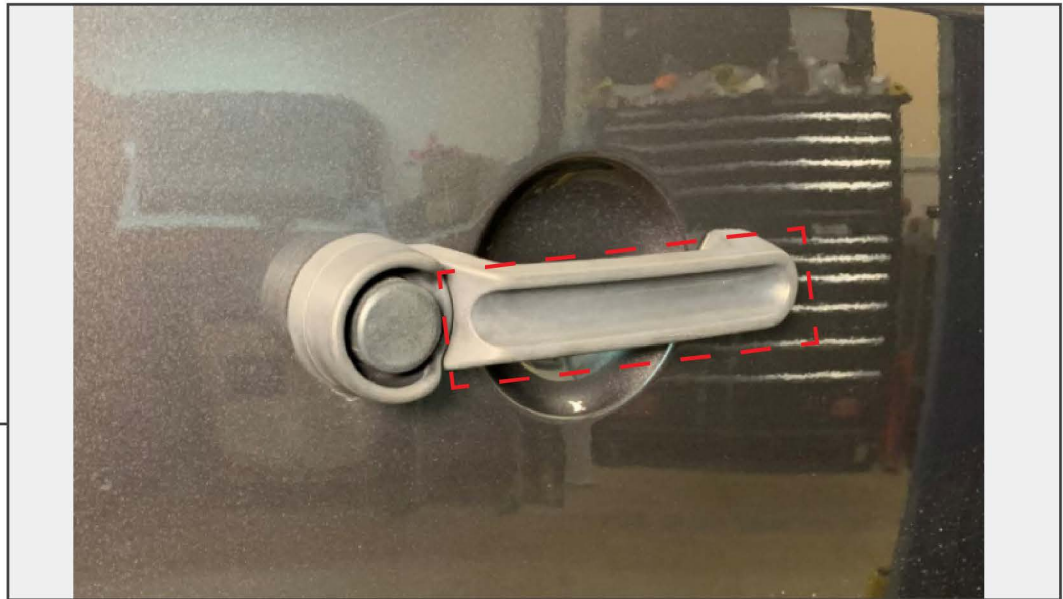
CONTENTS

(5) Door Handle Inserts

TOOLS REQUIRED

Microfiber Cloth
Isopropyl Alcohol

STEP 1



Using a microfiber cloth and isopropyl alcohol, clean the door handle of any dirt and debris.

STEP 2



Peel back the red film on the double sided tape on the door handle insert. Align the door handle insert into the door handle, then firmly stick the insert to the handle. Repeat this procedure to the remaining door handles.

Installation is now complete.