



STEERING BOX SKID PLATE BRACE

(1997-2006 WRANGLER TJ)

INSTALLATION INSTRUCTIONS

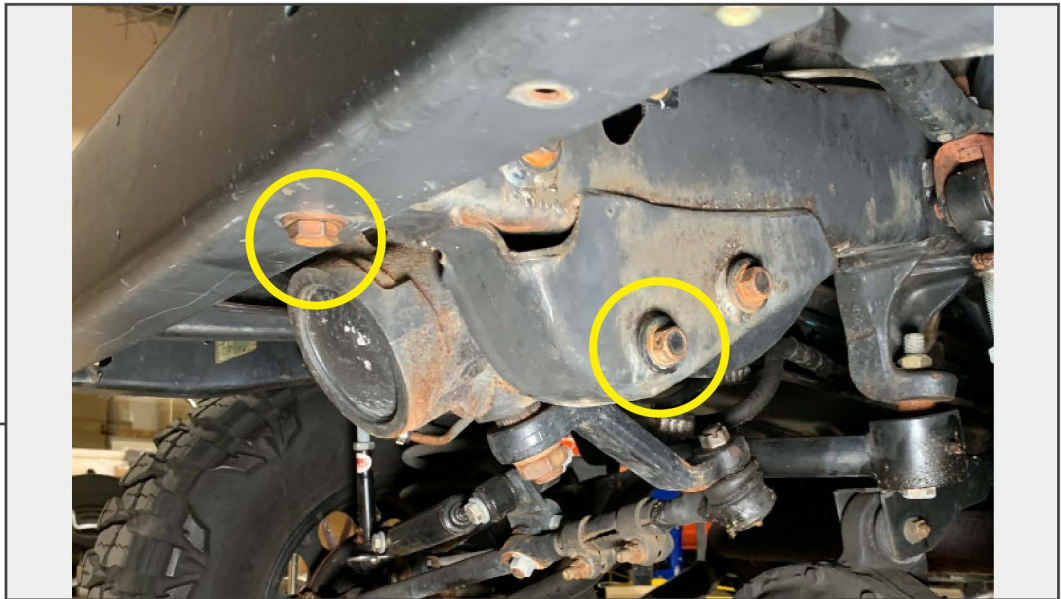
CONTENTS

- (1) Steering Box Skid Plate
- (2) 1/2-13 x 30mm Bolts
- (2) Flat Washers
- (2) Lock Washers
- (2) 1/2-13 Nuts

TOOLS REQUIRED

- 15mm Socket
- 16mm Socket
- 8mm Allen Socket
- Ratchet
- Drill (Optional)

SKU # J139382



STEP 1

Remove (1) 16mm Steering Box Bolt and (1) lower bumper bolt.



STEP 2

Align the skid plate with the steering box. Reinstall original steering box bolt through the skid plate and back into the steering box. Install (1) 1/2 x 30mm Bolt , (1) Flat Washer, and (1) Lock Washer through the skid plate into the bumper.



**STEP 3
(OPTIONAL)**

Using the skid plate as a template, mark the bumper to indicate the location to drill.



**STEP 4
(OPTIONAL)**

Remove the skid plate and drill the marked area on the bumper. Reinstall skid plate after drilling, and install (1) 1/2 x 30mm Bolt, (1) Flat Washer, and (1) 1/2-13 Nut through the drilled hole.

Installation is now complete.