



BLACK ALUMINUM DOOR HANDLE SET

(2007-2018 WRANGLER JK 4DOOR)

INSTALLATION INSTRUCTIONS

CONTENTS

- (5) Aluminum Handles
- (8) M5x0.8 8mm Allen Bolts
- (2) M5x0.8 16mm Allen Bolts
- (10) M5 Flat Washers

TOOLS REQUIRED

- T10, T20, T30 Torx Bit
- 2mm, 3mm Allen Wrench
- Phillips Head Screw Driver
- Flat Head Screw Driver
- 8mm, 10mm Socket/Wrench
- Ratchet
- 6" Extension
- Soft Pry Tool
- Masking Tape
- Razor Knife

SKU #J132859 / J137983

STEP 1



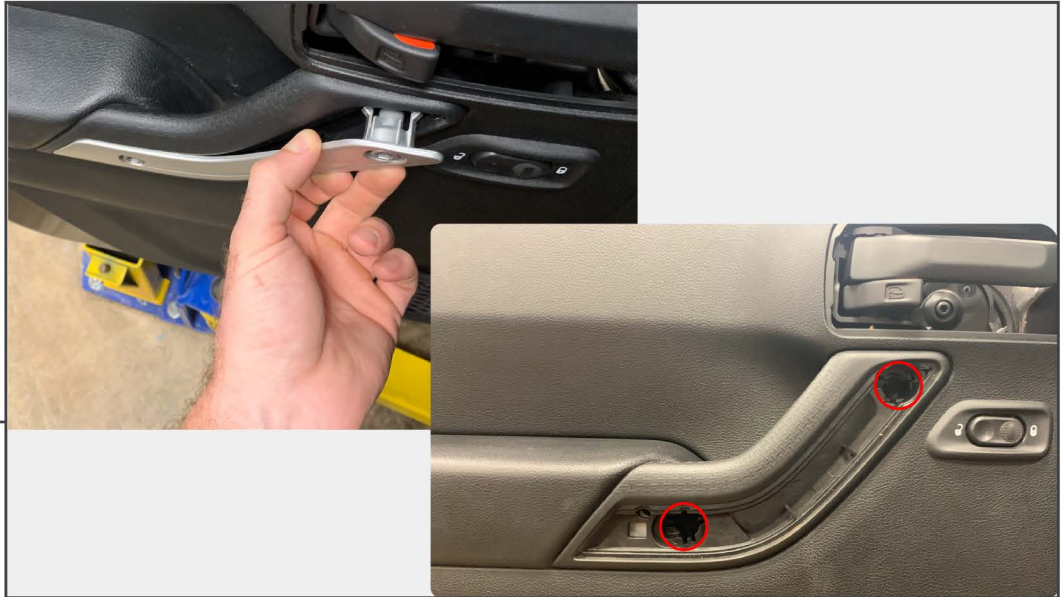
Front Door Installation: Start by rolling the window all the way down. Then, using a T20 Torx bit, remove the (2) screws circled above.

STEP 2



Using a soft pry tool, remove the door handle cover. Then, remove the T20 Torx screw. Starting at the front of the bezel use a soft pry tool to carefully pry off the door handle bezel.

STEP 3

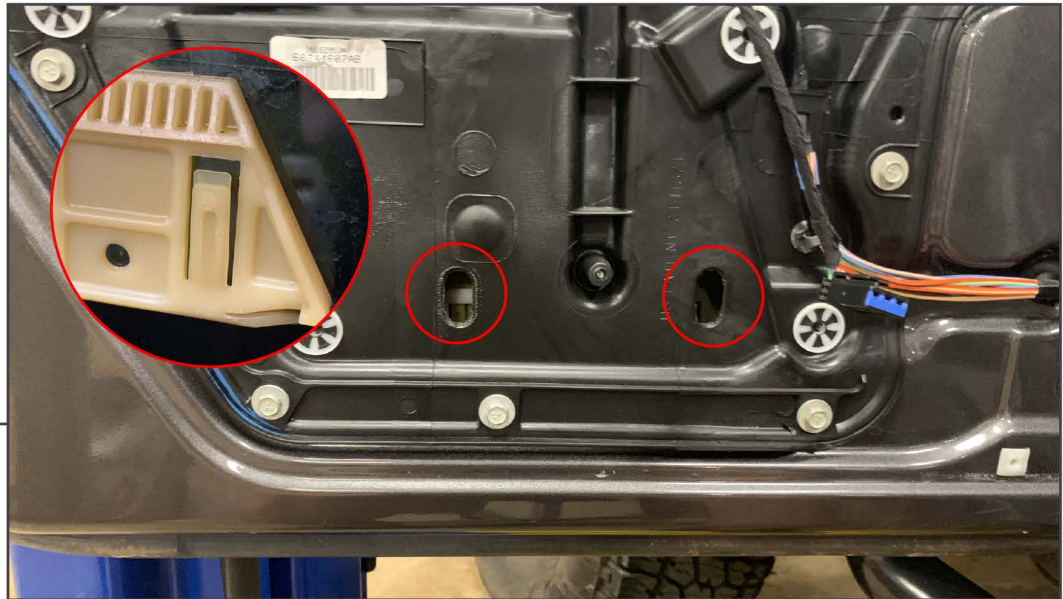


Using a soft pry tool, remove the door panel accent. Then, remove the (2) Phillips head screws

STEP 4



At this point the door panel is just clipped onto the door. Beginning at the bottom working your way up, pull the panel away from the door. Once the panel is unclipped, lift the panel off the door. Then, unclip the door lock switch from the backside of the panel.



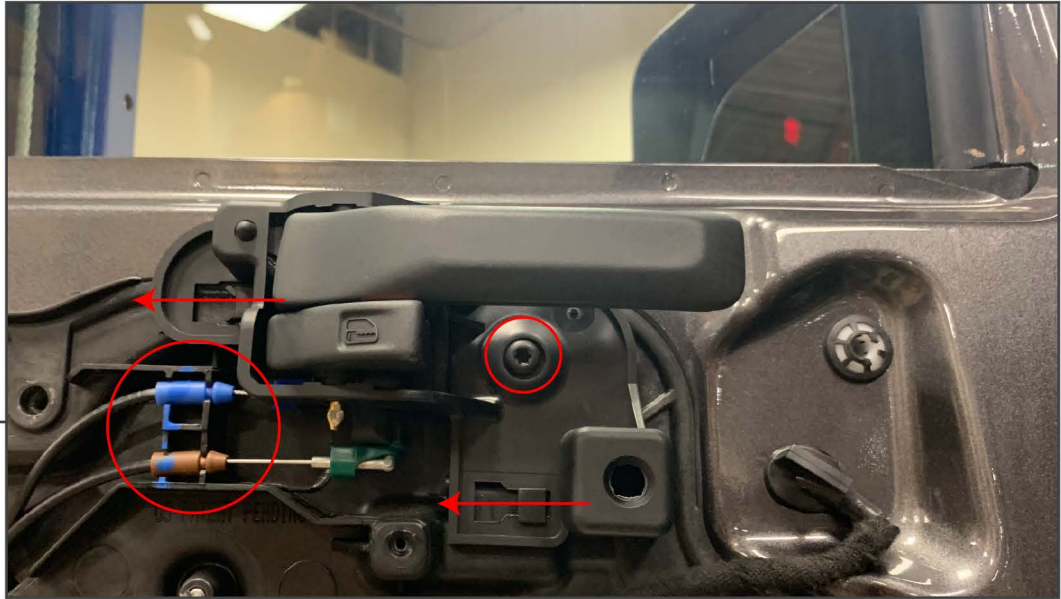
STEP 5

Ensure the window is all the way in the down position, using a razor knife carefully cut out the window retaining clip access plugs. This will expose the window retaining clips.

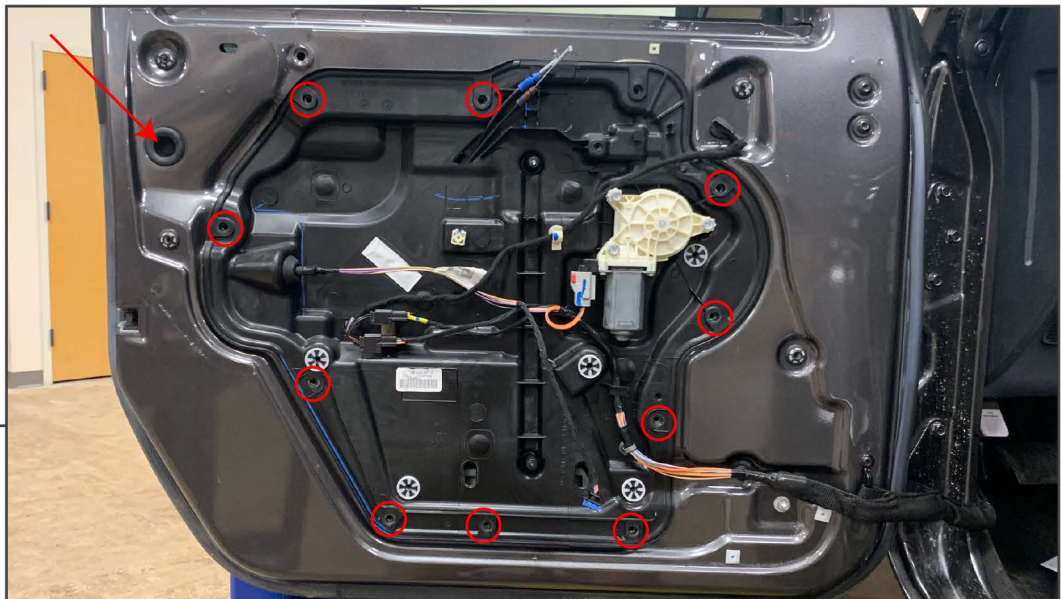


STEP 6

Gently depress the window retaining clips and carefully raise the window by hand. Tape the window in place.

STEP 7

Unscrew the T30 Torx screw from the door handle. Then, slide the door handle back and unclip the door latch cables.

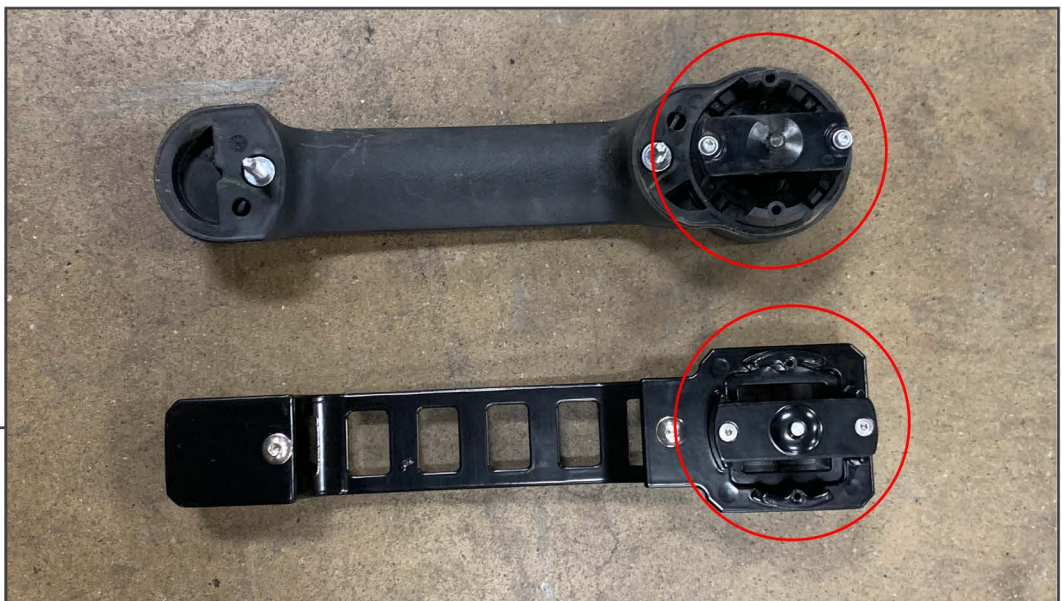
STEP 8

Remove the rubber grommet and (10) 10mm bolts securing the inner door panel to the door. Apply slight pressure around the outside of the panel to break the seal. Then press the panel down and gently pull the top away from the door. Do not completely remove the panel just pull it out enough to access the door handle fasteners.



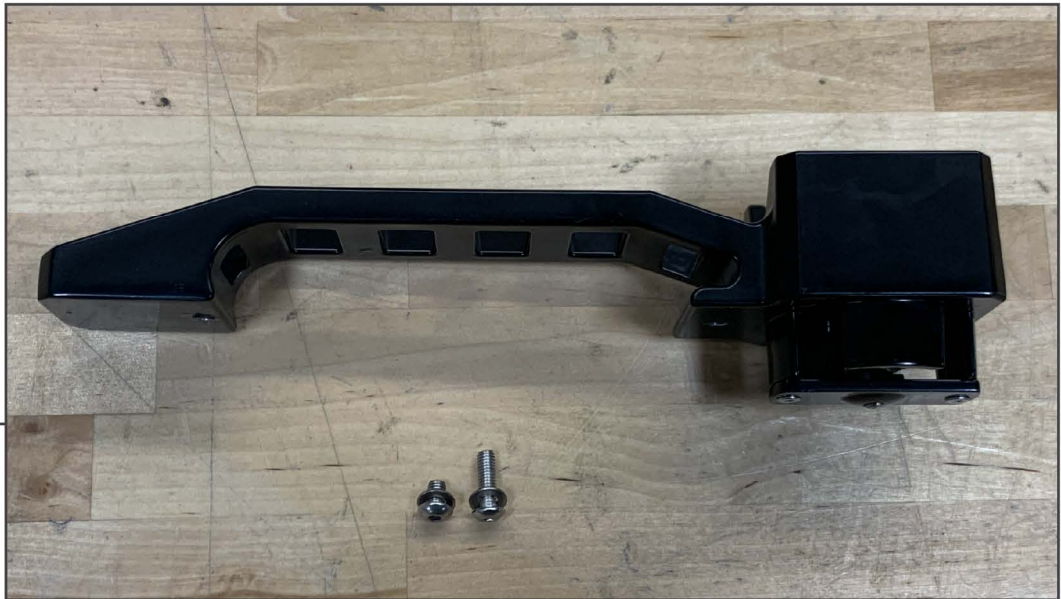
STEP 9

Using a deep 8mm socket, remove (2) nuts securing the door handle to the vehicle.



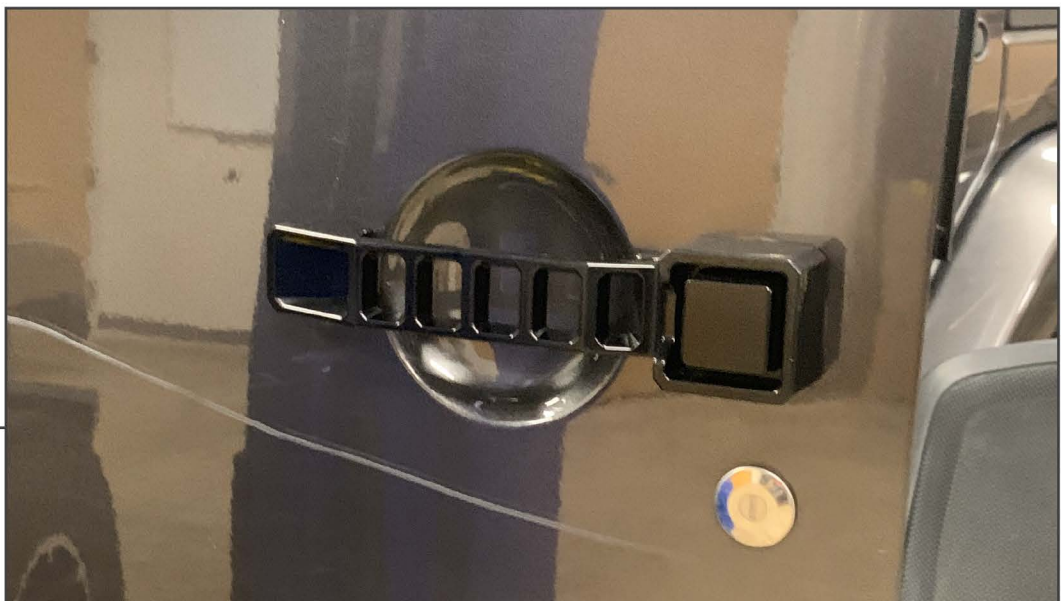
STEP 10

Compare the factory door handle to the aluminum handle. Ensure the brackets are oriented the same direction. If they the brackets are not, remove the (2) 2mm Allen screws and rotate the bracket so that it matches the factory handle.



STEP 11

Install the door handle to the vehicle using the supplied M5 hardware.



STEP 12

Follow Steps 1-8 in reverse order to reinstall the inner door components.



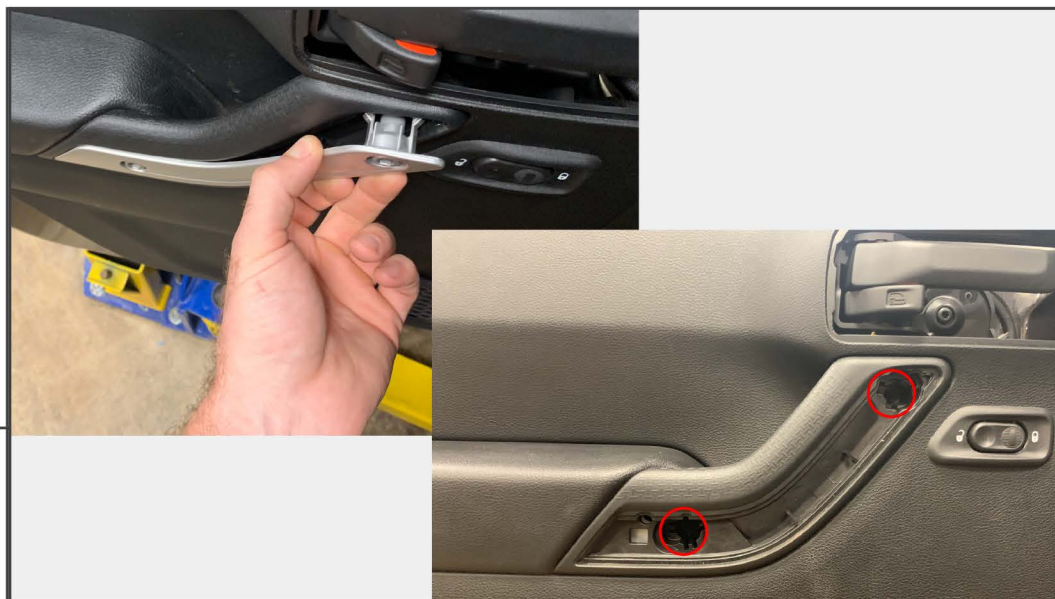
STEP 13

Rear Door Installation: Start by rolling the window all the way down. Then, using a T20 Torx bit, remove the (2) screws circled above.

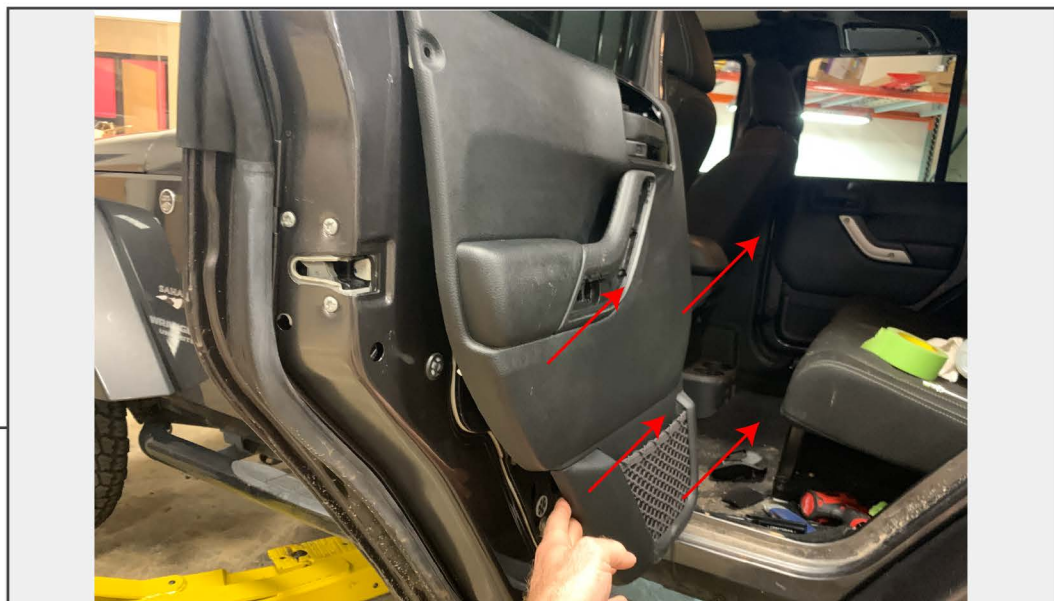


STEP 14

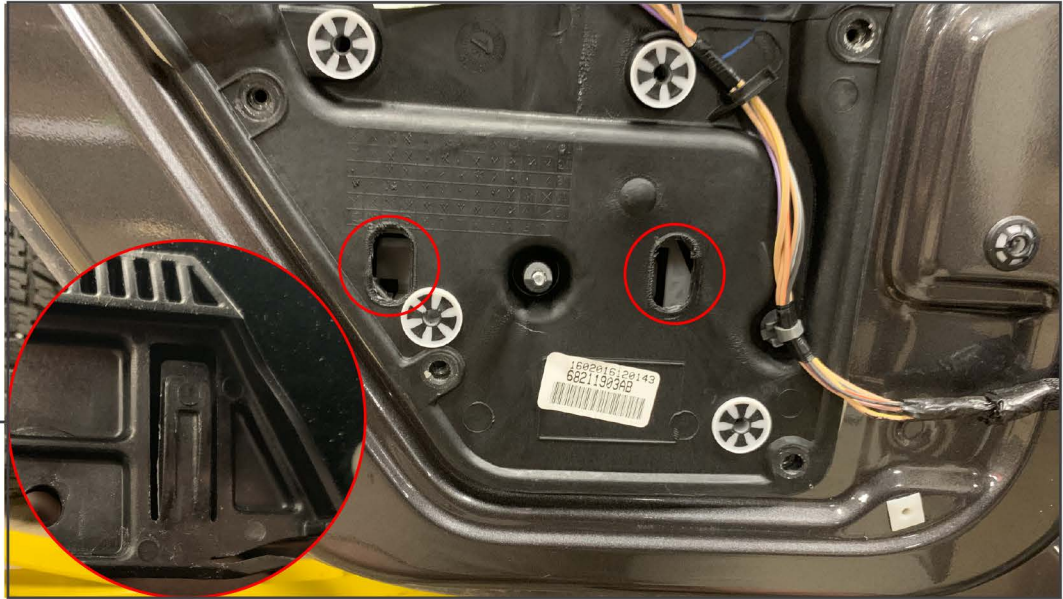
Using a soft pry tool, remove the door handle cover. Then, remove the T20 Torx screw. Starting at the front of the bezel use a soft pry tool to carefully pry off the door handle bezel.

STEP 15

Using a soft pry tool, remove the door panel accent. Then, remove the (2) Phillips head screws

STEP 16

At this point the door panel is just clipped onto the door. Beginning at the bottom working your way up, pull the panel away from the door. Once the panel is unclipped, lift the panel off the door.



STEP 17

Ensure the window is all the way in the down position, using a razor knife carefully cut out the window retaining clip access plugs. This will expose the window retaining clips.

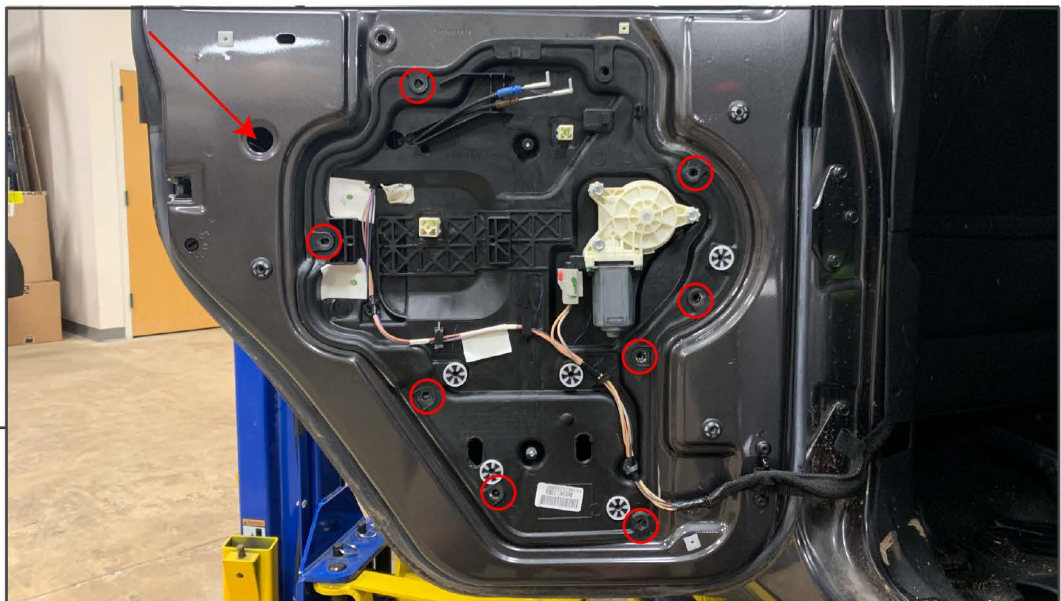


STEP 18

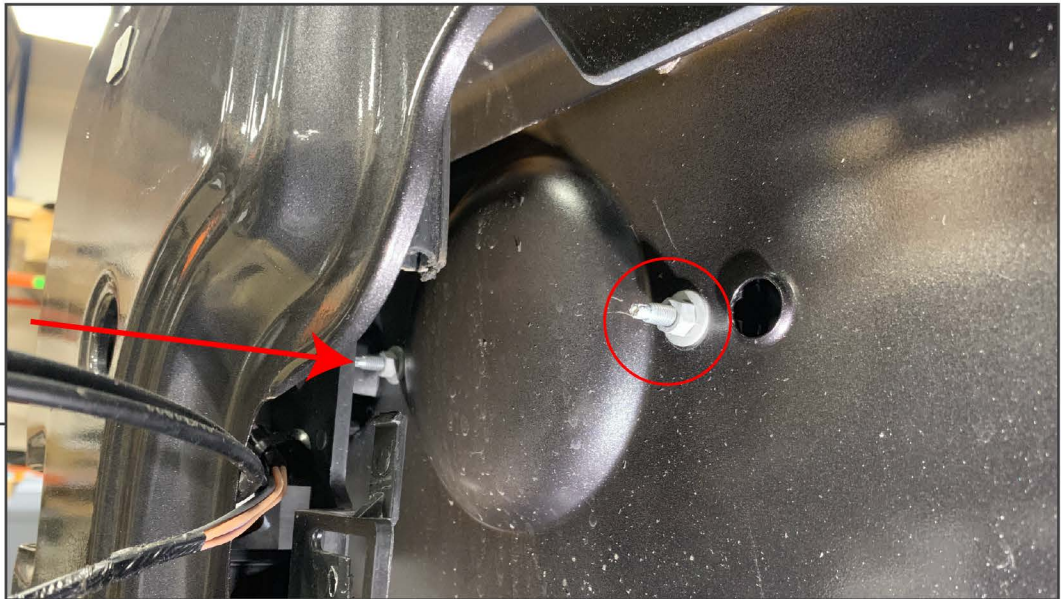
Gently depress the window retaining clips and carefully raise the window by hand. Tape the window in place.

STEP 19

Unscrew the T30 Torx screw from the door handle. Then, slide the door handle back and unclip the door latch cables.

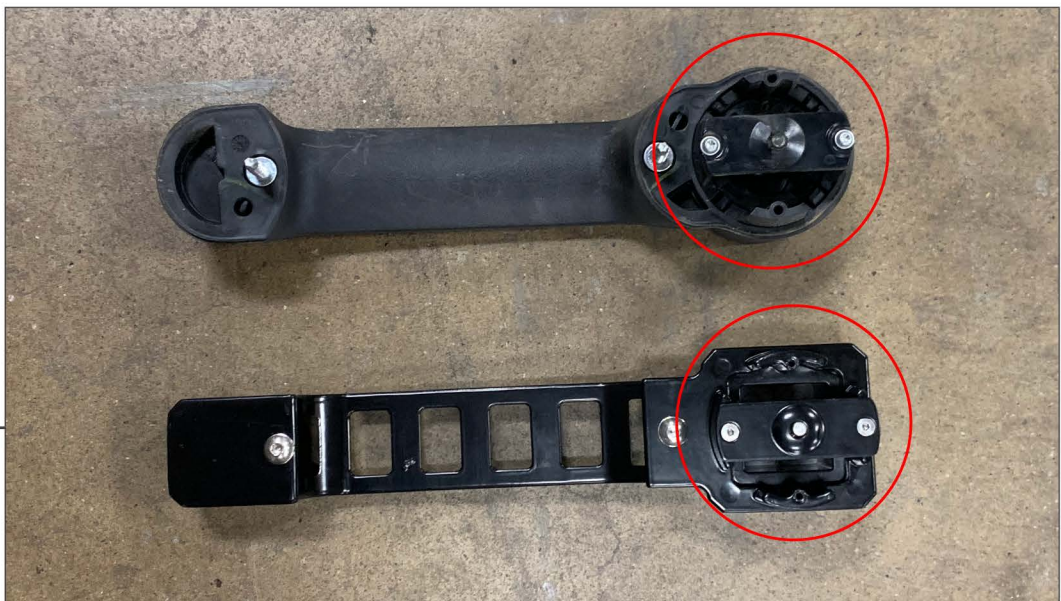
STEP 20

Remove the rubber grommet and (8) 10mm bolts securing the inner door panel to the door. Apply slight pressure around the outside of the panel to break the seal. Then press the panel down and gently pull the top away from the door. Do not completely remove the panel just pull it out enough to access the door handle fasteners.



STEP 21

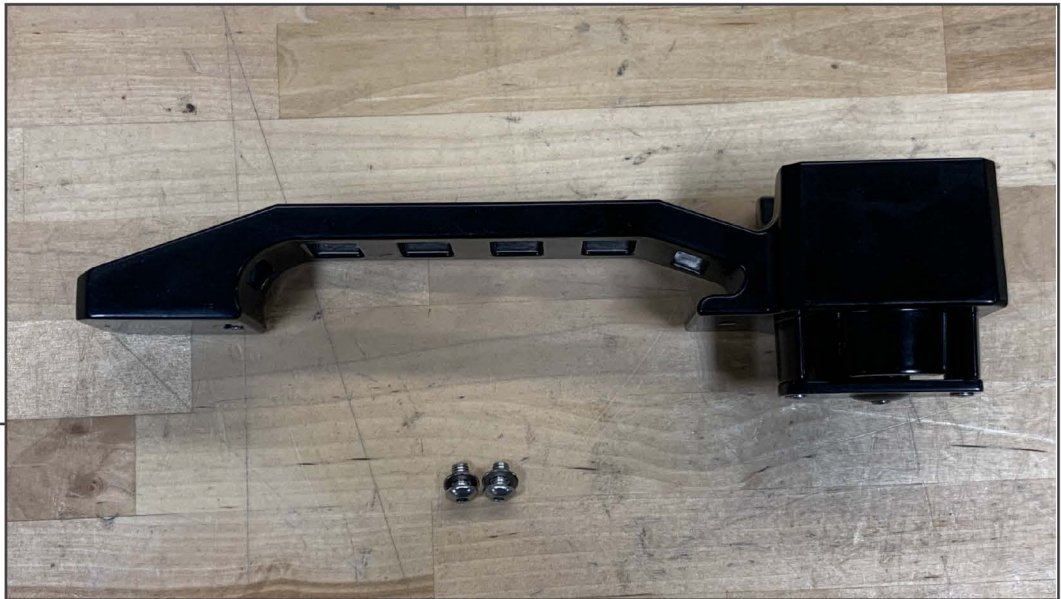
Using a deep 8mm socket, remove (2) nuts securing the door handle to the vehicle.



STEP 22

Compare the factory door handle to the aluminum handle. Ensure the brackets are oriented the same direction. If they the brackets are not, remove the (2) 2mm Allen screws and rotate the bracket so that it matches the factory handle.

STEP 23



Install the door handle to the vehicle using the supplied M5 hardware.

STEP 24



Follow Steps 1-8 in reverse order to reinstall the inner door components.

STEP 25



Tailgate Handle Install: Begin by opening the tailgate to access the interior panel.

STEP 26



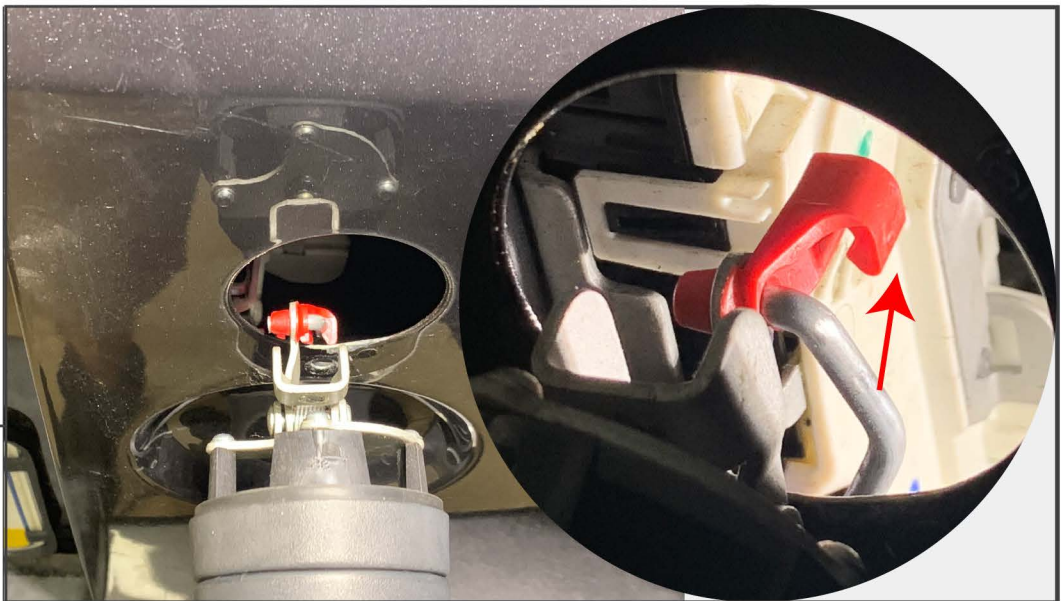
Using a soft pry tool, remove the access panel. There are (2) clips securing it to the vehicle.

STEP 27

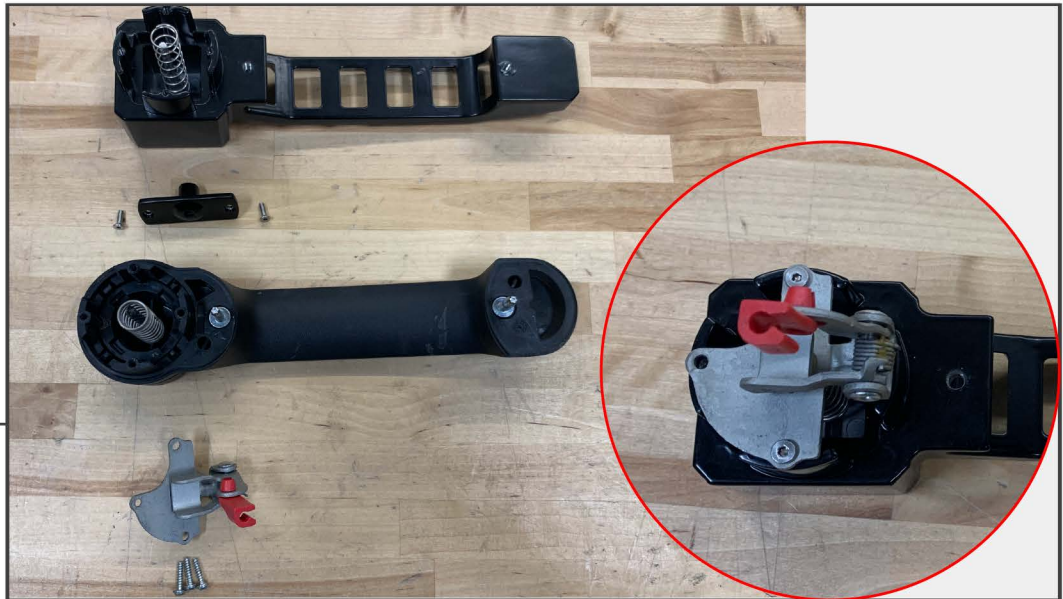


Using a 8mm socket, remove the (2) fasteners securing the handle to the vehicle.

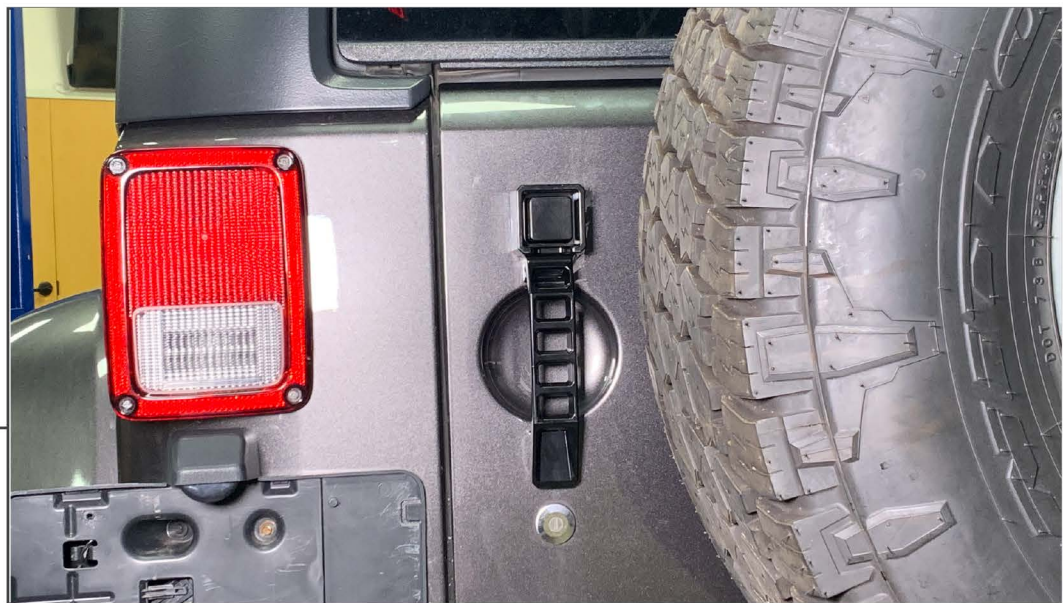
STEP 28



Remove the door latch rod from the handle by unhooking the retaining clip.

**STEP 29**

Using a 2mm Allen wrench, remove the spring retainer from the new door handle. Using a T10 Torx bit, transfer the factory rod attachment to the aluminum door handle using the (2) Allen screws that came on the aluminum handle. **Note: only (2) screw are required.

**STEP 30**

Reconnect the tailgate rod to the handle. Then, install the handle to the tailgate using the supplied M5x0.8 8mm hardware. Reinstall the interior trim panel to complete the installation.