



SLIM FENDER FLARES

(2007-2018 WRANGLER JK)

INSTALLATION INSTRUCTIONS

CONTENTS

Front Flares:

- (2) Front Fenders w/ LED Light
- (16) M6x1.00 Rivnuts
- (16) M6x1.00 25mm Allen Bolts
- (16) M6 Lock Washers
- (16) M6 Flat Washers
- (2) 75mm Spacers
- (2) 36mm Spacers
- (2) M8x1.25 120mm Allen Bolts
- (2) M8x1.25 65mm Allen Bolts
- (4) M8 Lock Washers
- (4) M8 Flat Washers
- (4) M8 Nuts
- (1) Rivnut Install Tool
- (10) 7" Zip Ties
- (2) Foam Strips

Rear Flares:

- (2) Rear Fenders
- (12) M6x1.00 Rivnuts
- (12) M6x1.00 25mm Allen Bolts
- (12) M6 Lock Washers
- (12) M6 Flat Washers
- (4) Self-Tapping Screws
- (1) Rivnut Install Tool
- (2) Foam Strips

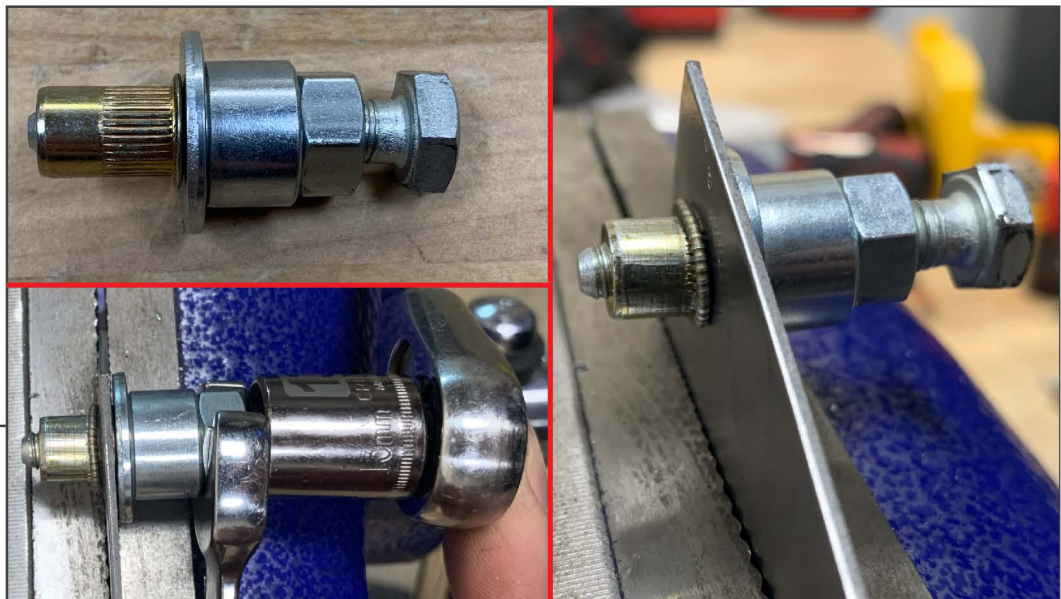
TOOLS REQUIRED

- Soft Pry Tool/ Panel Removal Tool
- 10, 13mm Socket
- 13mm Wrench
- 4,5mm Allen Wrench
- Ratchet
- Razor Knife

SKU: J134139

STEP 1

Begin by removing the factory fender liners, there are (5) 10mm bolts. Disconnect the factory marker light harness from the light. Remove the factory fender flare by firmly pulling it away from the vehicle, starting from the front of the fender and working towards the rear. Some of the factory plastic clips may break when removing the fenders this is normal. The clips are not required for installation of the new flares.

STEP 2

Understanding Rivnuts: Rivnuts provide solid mounting point when there is no access behind the mounting surface. When tightened, the rivnut collapses and clamps against the sheet metal of the vehicle creating a threaded hole. ****Note:** Do not over tighten the rivnut tool or you may damage the threads of the rivnut and/or the install tool. Thread the tool into the rivnut so that the tip of the tool is flush with the end of the rivnut. Insert the assembled tool into the pre-drilled hole. Hold the nut steady and turn the bolt clock-wise to tighten the rivnut. Once the rivnut is tight, turn the tool counter-clock-wise to remove. Repeat as need for additional holes.

**STEP 3**

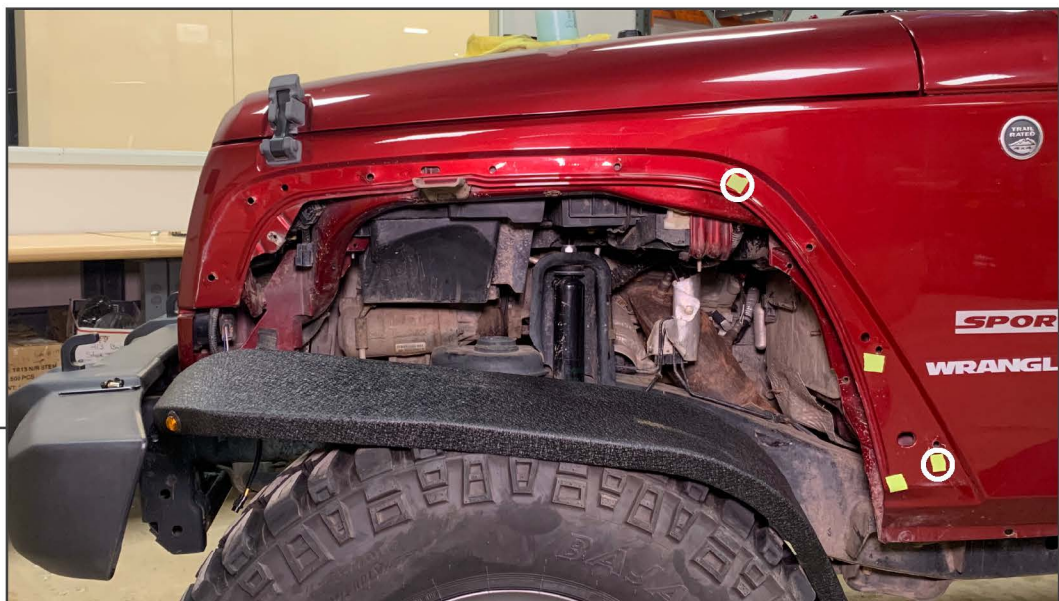
Install the supplied foam on the back side of the fenders, as shown above.

**STEP 4**

Drill the (6) holes circled above to 25/64". Paint any exposed metal with touch up paint or clear nail polish. Using the provided rivnut tool, install the supplied rivnuts.

STEP 5

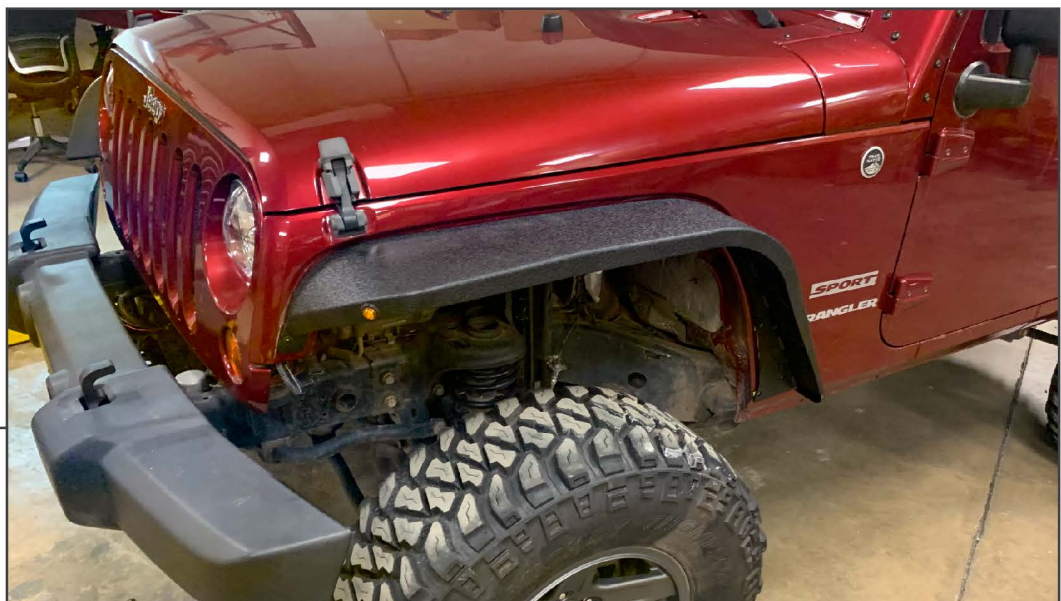
Loosely install the fender flare using the provided M6 Allen bolts. Using a marker, mark the (4) additional holes that will need to be drilled. Then remove the fender.

STEP 6

Drill the (2) holes circled to 25/64". Paint any exposed metal with touch up paint or clear nail polish. Using the provided rivnut tool, install the supplied rivnuts.

STEP 7

Drill through the outer and inner fender in the locations circled above. These locations will receive spacers and M8 bolts. Paint any exposed metal with touch up paint or clear nail polish.

STEP 8

Install the fender using (8) M6 Allen Bolts, (8) M6 Flat Washers, (8) M6 Lock Washers. See Step 9 for the spacer locations.

STEP 9

Install the supplied spacers between the inner and outer fenders using the M8 x 1.25 120mm bolt for the long spacer and the M8 x 1.25 65mm bolt for the shorter spacer. Secure the bolts with lock washers, flat washers, and nut.

STEP 10

Finish the front fender installation by connecting the factory wiring harness removed in Step 1 to the new marker light. Zip tie any additional wiring out of the way of any moving parts.

**Rear Flares
STEP 11**

REAR FENDER FLARE INSTALLATION: Using a flat head screw driver or trim panel removal tool, remove the (5) push clips holding the rear fender liner to the vehicle. Then, firmly pull the stock fender away from the vehicle moving from front to back. Some of the factory plastic clips may break when removing the fenders this is normal.

STEP 12

Enlarging the (6) factory holes circled above using a 25/64" drill bit. Paint any exposed metal with touch up paint or clear nail polish. Then install the provided rivnuts into the enlarged holes. Reference Step 2 as needed.

STEP 13



Install the supplied foam to the fender before installation.

STEP 14



Install the fender using (6) M6 Allen Bolts, (6) M6 Flat Washers, (6) M6 Lock Washers.

**STEP 15**

With the fender flares secured to the vehicle, finish by installing the (2) self-tapping screws at the front of the rear fender.

**STEP 16**

Ensure all M6 hardware is tightened to 8 ft-lbs and all M8 hardware is tightened to 18 ft-lbs. Installation is now complete.