

HD Tire Carrier w/Mount (18+ JL)

Contents:

- | | | |
|-----------------------------------|-----------------------------------|------------------------------|
| (1) HD Tire Carrier | (1) Lower 3rd Brake Light Bracket | (2) M6 Lock Nuts |
| (2) Tailgate Hinges | (4) M12x1.75x40mm Bolts | (3) M2 Screws, Washers, Nuts |
| (2) Tailgate Hinge Pins w/Clips | (4) M12 Flat Washers | (3) Lug Nuts |
| (4) Tailgate Spacers | (4) M10x1.50x35mm Bolts | (1) Allen Wrench |
| (1) Tire Carrier Base | (7) M10x1.50x30mm Bolts | (2) Hinge Gaskets |
| (1) Tire Carrier Mount | (12) M10 Large Flat Washers | |
| (1) Rear Camera Mount | (14) M10 Flat Washers | |
| (1) Rear Camera Cover | (7) M10 Lock Nuts | |
| (1) Upper 3rd Brake Light Bracket | (2) M6x1.0x20mm Allen Bolts | |
| | (4) M6 Flat Washers | |

Tools Required:

- 13mm, 16mm Sockets
- 3/8" or 1/2" Ratchets & Extensions
- T20, T25, T40, T50 Torx Bits
- T9 Torx Bit
- Trim Panel Removal Tool
- Clean Towel
- Cleaning Solution



STEP 1 //

Locate the T40 torx lock screw on the camera cover, and turn it counter clockwise to unlock. Remove the camera cover by pulling away from the vehicle. Then remove the spare tire.



STEP 2 //

Using a trim panel removal tool, carefully pry the plastic tailgate cover off. Remove cover.



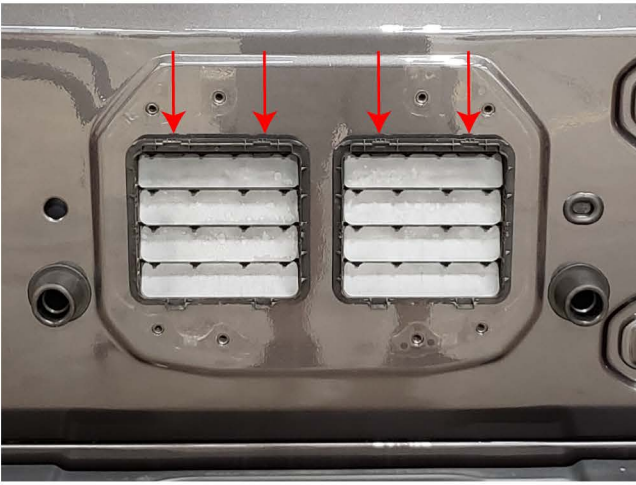
STEP 3 //

Locate, and unplug the (3) wire connections.



STEP 4 //

Carefully remove the wiring and grommet from the vehicle. Locate, and remove the (8) 13mm bolts holding the tire carrier secure. Remove the carrier. **Note factory hardware will be reused.



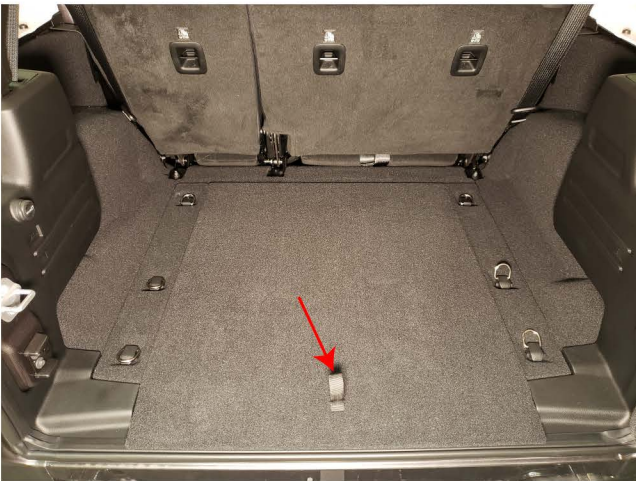
STEP 5 //

Using a trim panel removal tool, carefully pry on the tabs and remove the (2) tailgate vents.



STEP 8 //

Press in the release tab, and remove the rear tire jack cover from the vehicle.



STEP 6 //

Pull and remove the rear trunk cover.



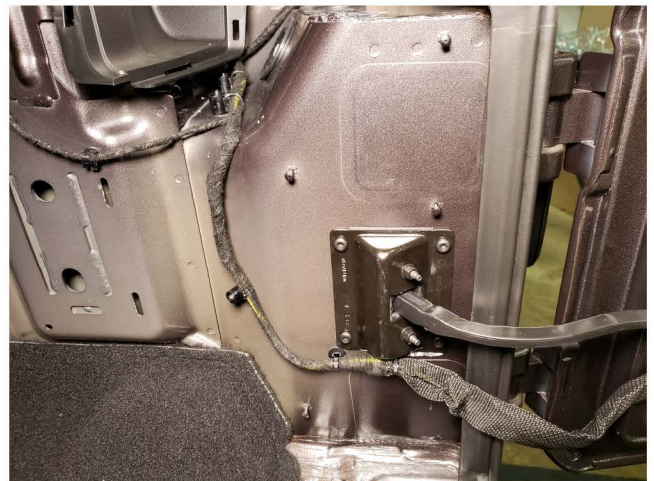
STEP 9 //

Using a trim panel removal tool, pry and remove the seat belt trim cover and taillight access cover.



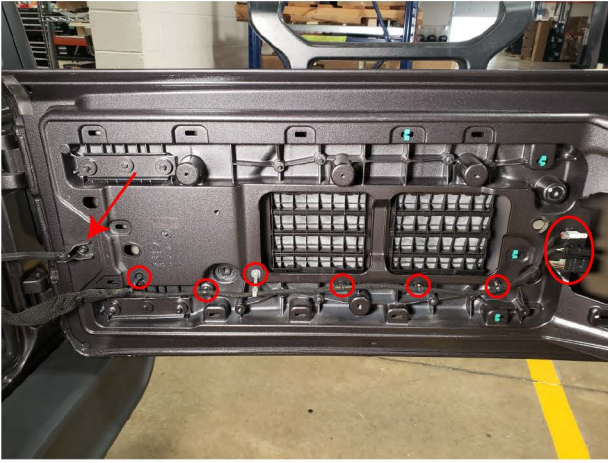
STEP 7 //

Locate, and remove the (3) tie down hooks using a T40 torx bit. Then remove the panel.



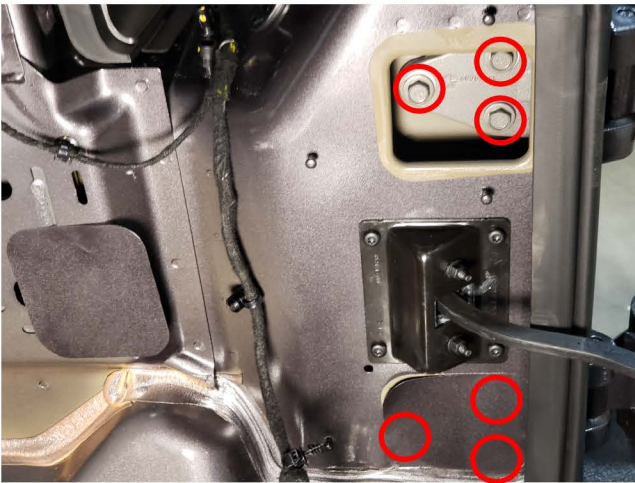
STEP 10 //

Gently pry the interior trim panel away from the vehicle. Remove cover to gain access to the hinge vinyl covers.



STEP 11 //

Using a trim panel removal tool, carefully pry the plastic push clips securing the factory wiring to the tailgate. Then using a T40 torx bit, remove the door hinge stop.



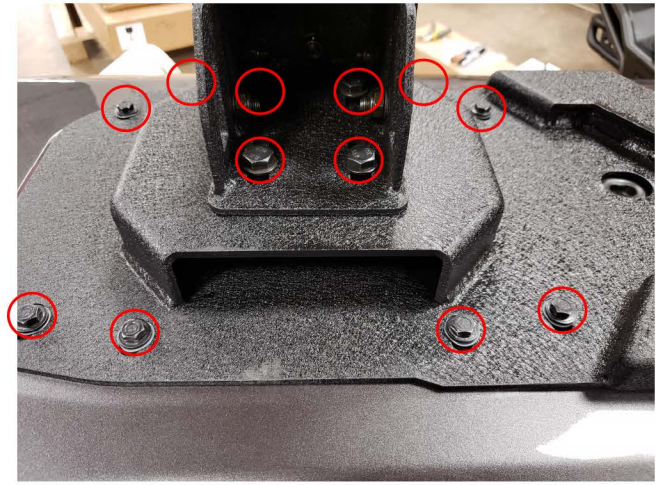
STEP 12 //

Carefully peel the (2) vinyl covers to gain access to the tailgate hinge bolts. Remove the (6) 13mm bolts. Remove tailgate from the vehicle. **Note: Recommended to have a helper steady the tailgate while removing bolts.



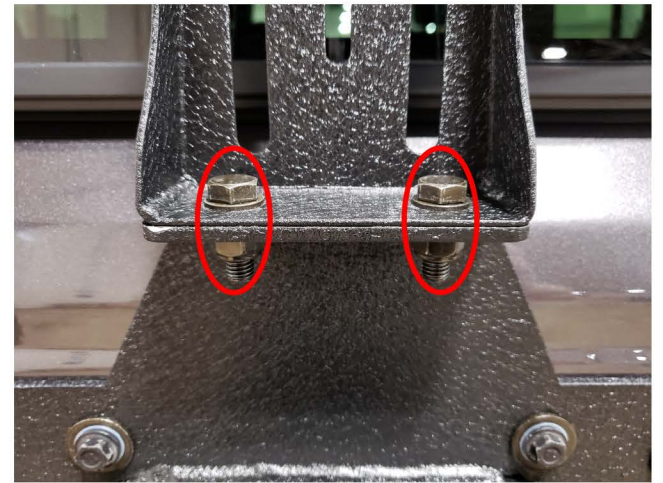
STEP 13 //

Carefully lay the tailgate down on a flat surface. Remove the (2) on each bracket T50 torx bolts. Remove both brackets.



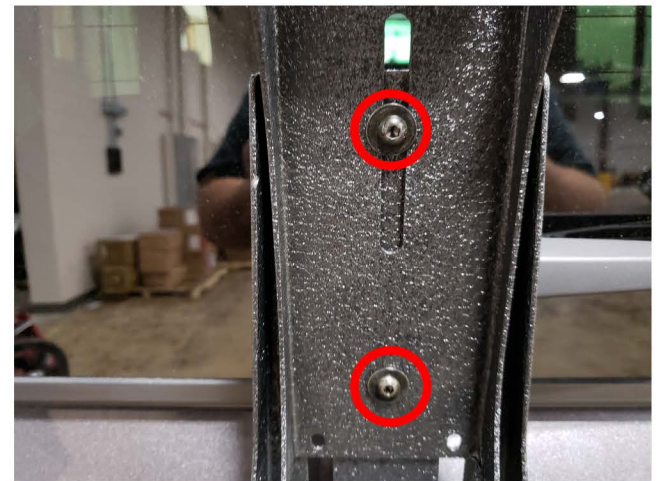
STEP 14 //

Install the HD tire carrier to the tailgate using the factory hardware from Step 4, and the (4) M12x1.75x40mm bolts, and washers. Then bolt the spare tire base to the carrier using the (4) M10x1.50x35mm bolts, washers, and lock nuts.



STEP 15 //

Install the lower part of the third brake light bracket to the carrier using the (2) M10x1.50x30mm bolts, washers, and lock nuts.



STEP 16 //

Install the upper third brake light bracket to the lower bracket using the (2) M6x1.0x20mm Allen bolts, washers, and lock nuts.



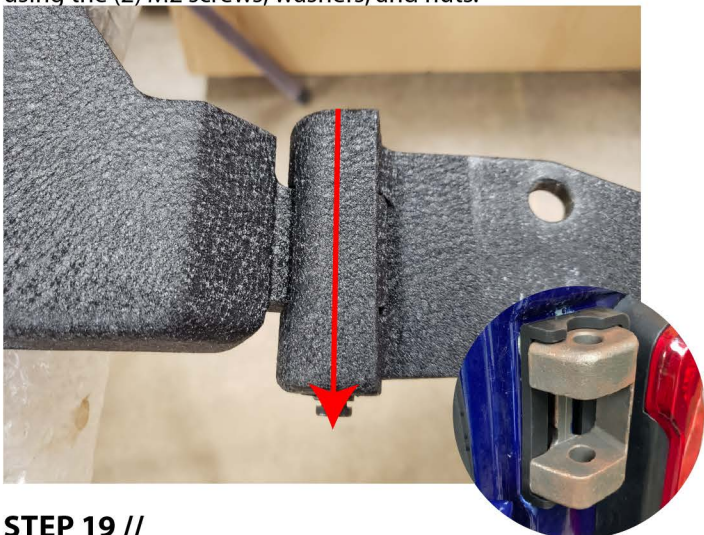
STEP 17 //

Remove the (7) T25 torx screws to gain access to the third brake light and wiring. Unplug the connector and remove the (2) T20 torx bit screws securing the third brake light. Transfer the 3rd brake light to the new bracket. Carefully tighten the factory torx screws. The screw bosses are plastic and can strip out easily.



STEP 18 //

Remove the (2) T25 torx bit screws press to release the rear camera bracket from the carrier. Unplug the connector, and remove the T9 torx screws securing the camera to the bracket. Transfer the camera to the new bracket using the (2) M2 screws, washers, and nuts.



STEP 19 //

Using a large hammer, carefully hammer in the hinge pin to install the door hinge to the carrier. Then secure the pin using the metal clip. Place the provided hinge gasket over the hinge prior to installing it to the vehicle.



STEP 20 //

Install the spare tire carrier mount to the spare tire base using the (5) M10x1.50x30mm bolts, washers, and nuts. Then install the camera bracket to the carrier mount. This will be secured in place once the spare tire is mounted.



STEP 21 //

Reinstall the tailgate using the factory hinge hardware from Step 12. ****Note:** Have a helper help steady the tailgate in place while tightening the hinge bolts. Reinstall the wiring connections, interior panels, and spare tire. Installation is now complete.