

Jeep Wrangler (18+ JL) Tubular Doors - Rear

Contents:

- (1) Left Rear Door
- (1) Right Rear Door
- (2) Latches
- (6) Latch Spacers
- (2) Door Straps
- (2) Door Rubber Stoppers
- (4) M8 Lock Nuts
- (4) M8 Flat Washers
- (4) M6x1.0x25mm Screws
- (4) M6 Flat Washers
- (4) M6 Lock Washers
- (2) M4x0.7x20mm Screws
- (6) M5 Flat Washers
- (2) Allen Wrenches

Tools Required:

- Trim Panel Removal Tool
- T50 Torx Bit
- T40 Torx Bit
- Rubber Mallet
- 10mm Socket
- Ratchet



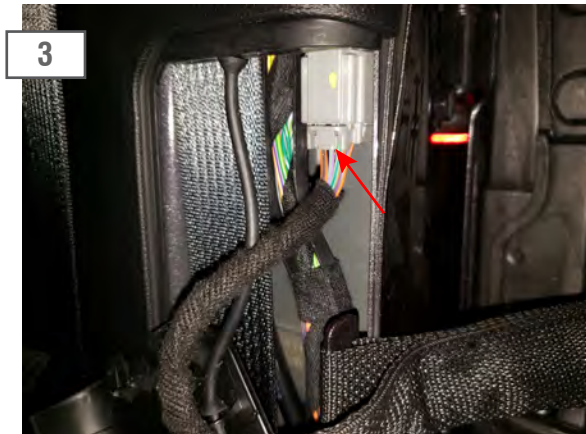
Slide the front seat forward to access the interior trim panel. Using a panel removal tool, pry the panel off. ****Note:** The panel has indents on the sides, pry from those indents.



Locate, and remove the T40 torx bolt securing factory door hinge stop. Lift the door up to remove it from the vehicle. Then reinstall the factory T40 torx bolt as a place holder to ensure it doesn't get lost.



Begin by removing the T-50 Torx nuts on the bottom of the factory door hinges. These will not be reused.



Roll down the windows so that the door is easier to handle while removing it from the vehicle. Unplug the connector. Slide the hinge strap off the chassis mount.



Install the new door, you may need to use a rubber mallet to seat the door all the way onto the hinge. Use the supplied M8 nut and washer to secure the door to the hinge.



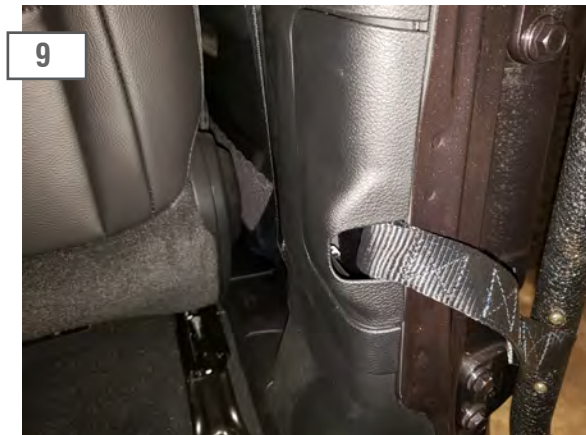
Install the rubber door stopper to the door using the M4x0.7x15mm screw, and M4 flat washer.



Align the door latch with the striker using the latch spacers as seen above. **Note: Spending extra time aligning the latch to the striker will result in a smoother feel when opening and closing the door.



Loosely install the door latch using the M6x1.0x25mm screws, flat washers, and lock washers.



Install the door strap from the Tubular Door to the chassis mount. Reinstall the trim panel.