

# Spare Tire Relocation Bracket

## Installation Instructions

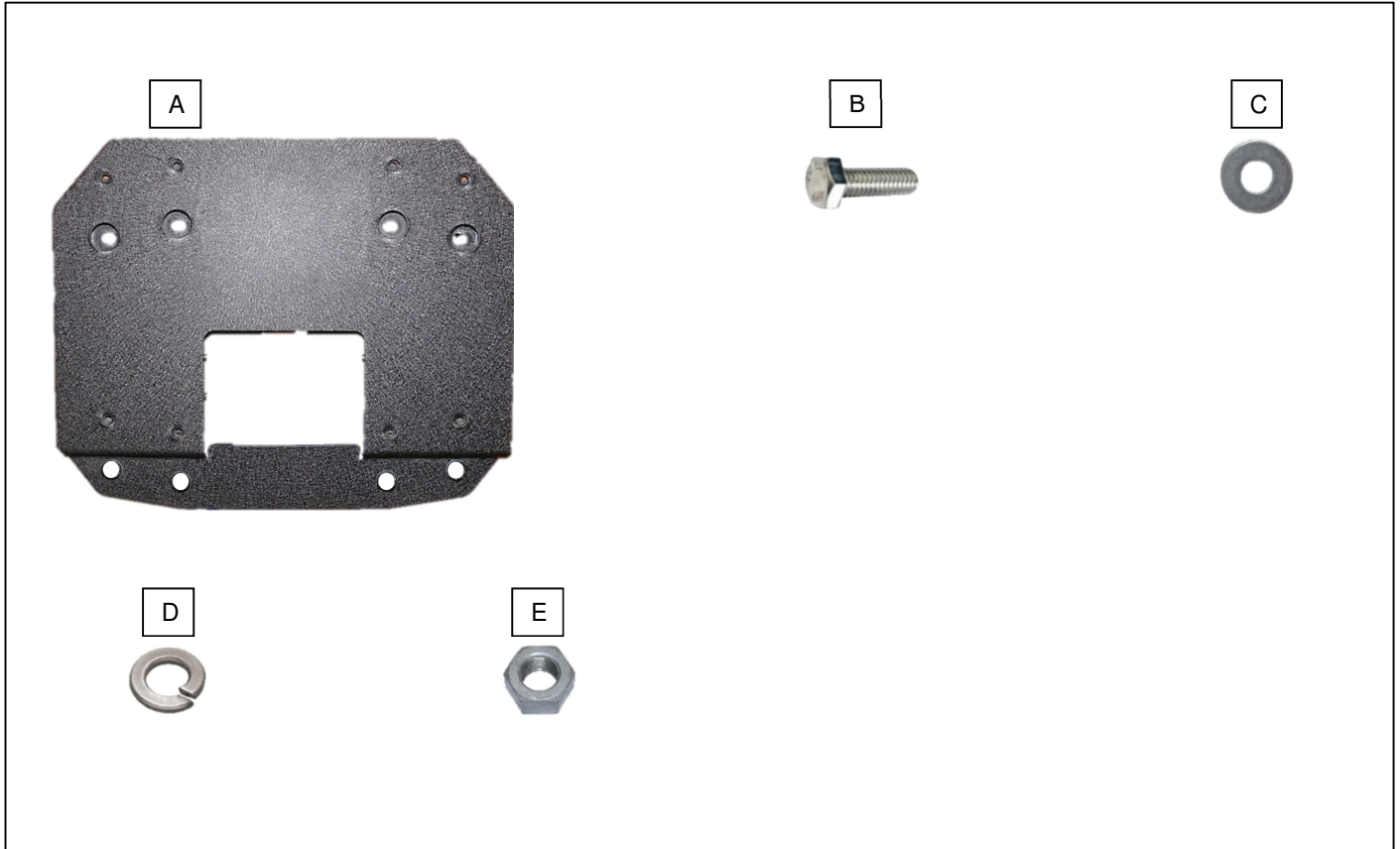
**PART NUMBER J130928**  
**FITS JEEP WRANGLER JL**  
**18-19**

### KEY TO COMPONENTS

- A. 1 ea. Relocation bracket
- B. 8 ea. Hex Head Bolt M8x1.25x35mm
- C. 8 ea. Flat washer M8
- D. 8 ea. M8 split washer
- E. 1 ea. M8x1.25 hex head bolt

### TOOLS NEEDED

- Socket drive
- 16mm Wrench
- 18mm wrench
- 7mm socket
- Allen wrench set



Please take a few minutes to read and thoroughly familiarize yourself with the installation procedures outlined in this manual. Following the steps as outlined will save you time and help reduce mistakes. Once the instructions are reviewed, if you feel that you are not capable of safely installing the parts seek the help of a qualified installation expert to help you complete the job. The manufacture is in no way responsible for any personal injury or vehicle damage that may occur during the installation.

### **California Proposition 65 Warning!**

**This product may contain one or more chemicals known to the State of California to cause cancer and birth defects or other reproductive harm. For more information go to [www.P65Warnings.ca.gov](http://www.P65Warnings.ca.gov).**

## FACTORY BUMPER REMOVAL



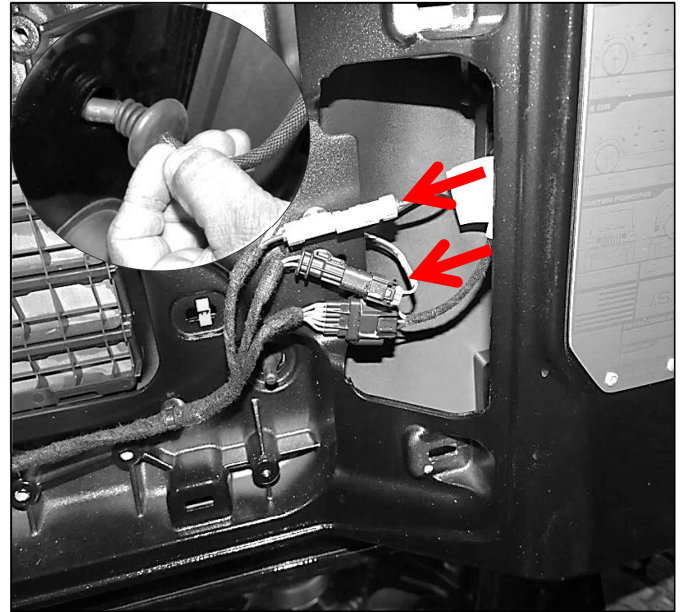
**Step 1.**  
Using a T-40 torx bit locate and remove the plastic lock from the backup camera as shown. Set factory plastic lock aside in a protected area.



**Step 2.**  
Using a 22mm socket remove all three factory lug nuts holding the spare tire in position. Remove factory spare tire from the vehicle. Set factory hardware and spare tire aside for later use.

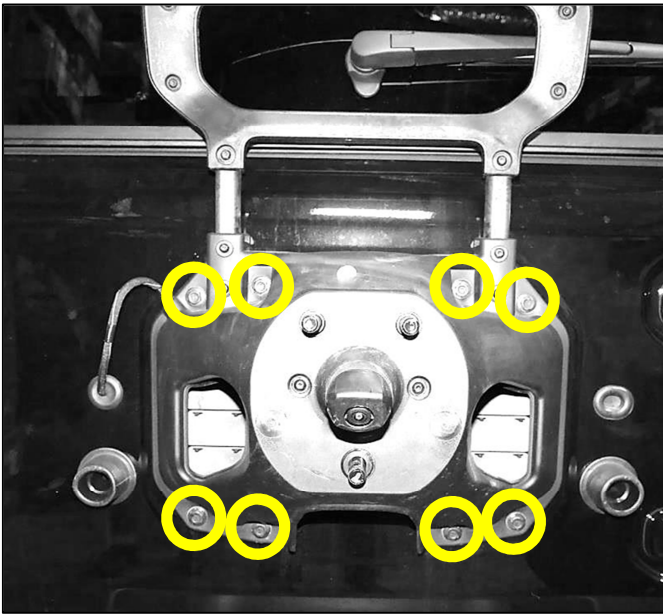


**Step 3.**  
Open rear swing gate to access 3<sup>rd</sup> brake light plug. Using a pair of plastic pry bar or similar tool pry out the access panel. Remove access panel from vehicle. Set access panel aside in a protected area for later use.



**Step 4.**  
Locate and disconnect the 3<sup>rd</sup> brake light and back up camera. Firmly press down on the Mate-m-lock plug. Remove brake light plug with plastic rivet removal tool or similar tool. Feed 3rd brake light/backup camera plug back through the swing gate.

## REMOVING FACTORY TIRE CARRIER continued



**Step 5.**  
Using a 13mm socket locate and remove 8 factory hex head bolts holding the factory tire carrier onto the vehicle. Set factory hardware aside for later use.

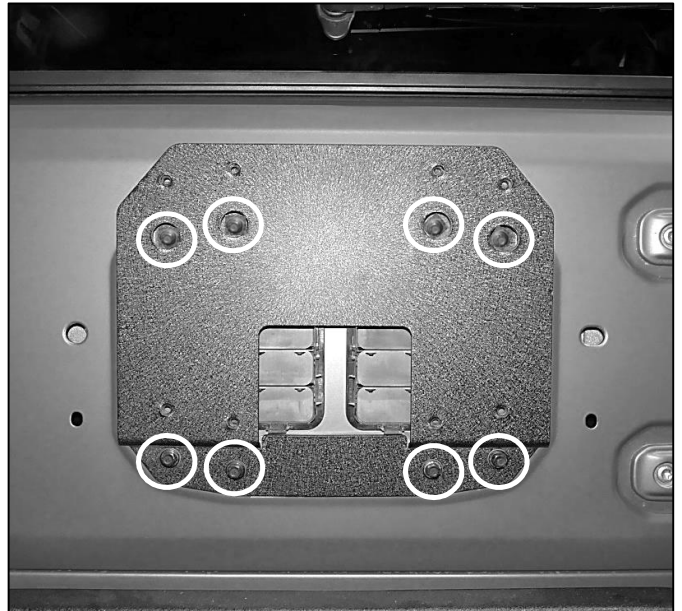


**Step 6.**  
Remove factory tire carrier from vehicle. Set factory tire carrier aside in a protected area.

## INSTALLING RELOCATION BRACKET

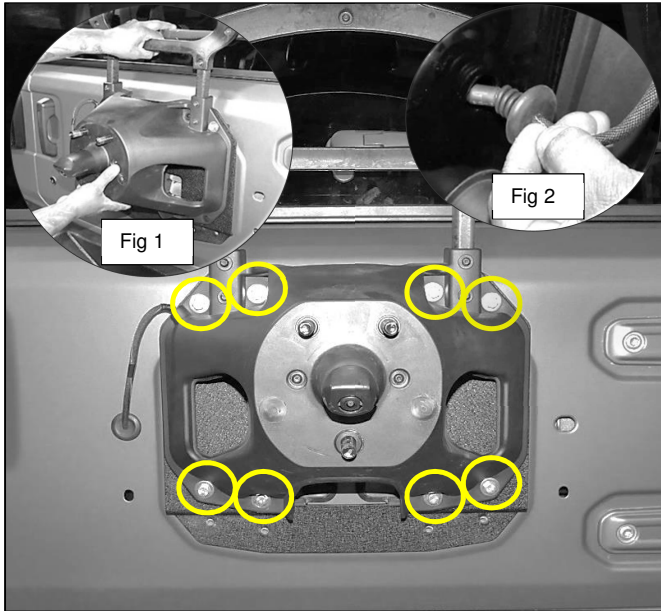


**Step 1.**  
Place supplied tire relocation bracket (A) onto the vehicle as shown. Line up the holes in the relocation bracket with the holes on the vehicle tail gate.



**Step 2.**  
Reinstall all 8 factory bolts through the hole in the relocation bracket and onto the vehicle as shown.

## INSTALLING RELOCATION BRACKET continued



**Step 3.**  
Place factory tire carrier onto the relocation bracket as shown fig 1. Line up the holes in the tire carrier with the holes in the relocation bracket. Install a supplied M8x1.25x30mm hex head bolt (B) with a supplied M8 split washer (D) and supplied M8 flat washer (C) through the hole in the factory tire carrier and onto the relocation bracket. Repeat step for remaining hex head bolt. Tighten down all bolts using a 13mm socket. Feed third brake light/ backup camera plug through the swing gate fig 2.



**Step 4.**  
Open rear swing gate and connect the third brake light/ back up camera fig 1. Reinstall the access panel back onto the vehicle. Reinstall spare tire back onto the vehicle.

This completes the installation.