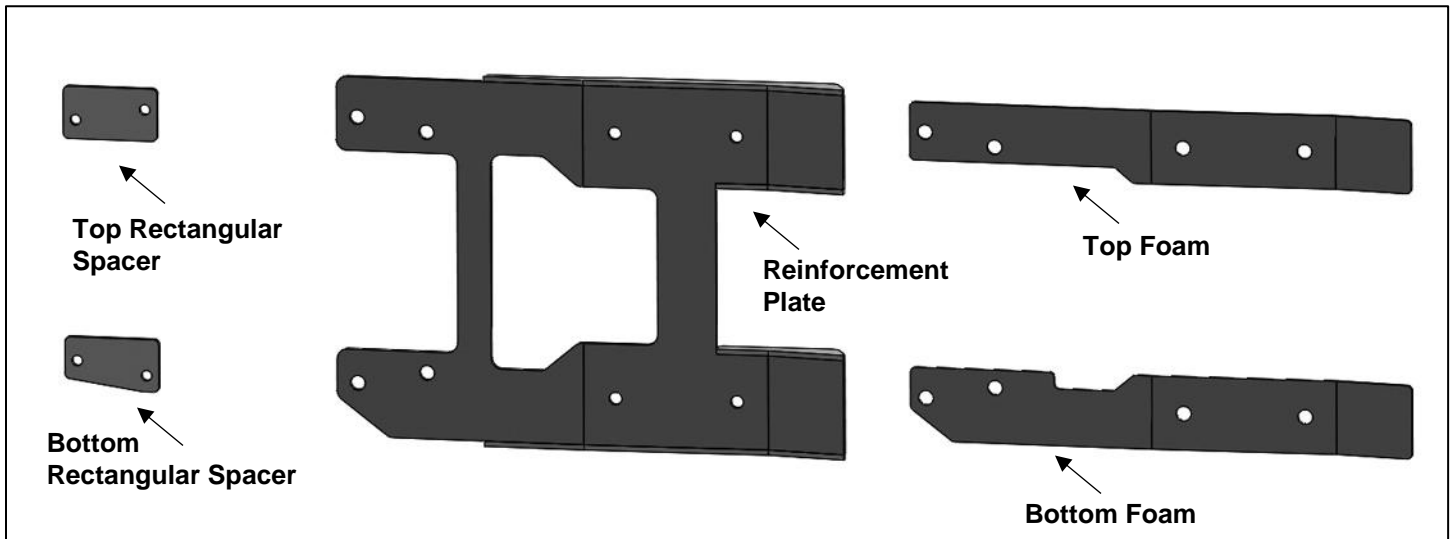


**TAILGATE REINFORCMENT PLATE  
2018 JEEP WRANGLER JL**

**PARTS LIST:**

1	Tailgate Reinforcement Plate	4	10-1.5mm x 60mm Button Head Bolts
1	Top Rectangular Spacer	4	10mm Lock Washers
1	Bottom Spacer	4	10mm x 20mm x 2mm Flat Washers
1	Top Foam	1	10mm Allen Wrench
1	Bottom Foam		



**PROCEDURE:**

**REMOVE CONTENTS FROM BOX. VERIFY ALL PARTS ARE PRESENT. READ INSTRUCTIONS CAREFULLY BEFORE STARTING INSTALLATION.**

1. Start installation at the rear of the vehicle and remove the (3) factory lug nuts holding the spare tire in place, **(Figure 1)**. Remove spare tire and set aside.
2. Next, open the tailgate and locate the camera and CHMSL (3<sup>rd</sup> brake light), connectors, **(Figure 2)**. Unplug the connectors from the back and pull the wires out through the hole, **(Figure 3)**.
3. Remove the (8) factory bolts holding the spare tire carrier to the tailgate and place the carrier on a stable clean surface, **(Figure 4)**. Mark a line across the tailgate opening or use tape to properly align the door after installation is complete.
4. Select the Reinforcement Bracket and the Top and Bottom adhesive Foam Seals. Attach the adhesive Foam to the back of the Reinforcement Plate, **(Figure 5)**.
5. Next, remove the (4) factory hinge bolts from the door, **(Figure 6)**. **NOTE:** Make sure the tailgate is fully closed before removing the factory hinge bolts. Attach the Reinforcement Plate to the door hinge using (4) 10mm Button Head Bolts, (4) 10mm Lock Washers and (4) 10mm Flat Washers, **(Figure 7)**.
6. **IMPORTANT:** Please read the following carefully and proceed with the proper steps.
  - a. If installing the **Reinforcement Plate** with the **Spare Tire Relocation Kit** (Sold Separately), then proceed to follow the instruction sheets available in the Spare Tire Relocation Kit.  
OR
  - b. If installing **ONLY** the **Reinforcement Plate**, then proceed to **Step 7**.
7. Select the Top and Bottom Spacers along with the factory spare tire carrier. Insert (2) factory bolts through the **driver/left top side** of the tire carrier, and out through the Top Rectangular Spacer. Repeat Step to attach the Bottom Spacer to the **driver/left bottom side** of the tire carrier, **(Figure 8)**.
8. Next, bolt the driver/left side of the tire carrier with Spacers to the tailgate using the inserted (4) factory bolts. Attach the passenger/right side of the tire carrier to the Reinforcement Plate and tailgate using the remaining (4) factory bolts, **(Figure 9)**. Do not tighten hardware at this time.
9. Level and adjust the spare tire carrier and tighten **ONLY** the tire carrier hardware.
10. Push the camera and light connectors through the hole in the tailgate and plug in, **(Figures 2 & 3)**.
11. Reinstall the spare tire onto the tire carrier using the (3) factory lug nuts.

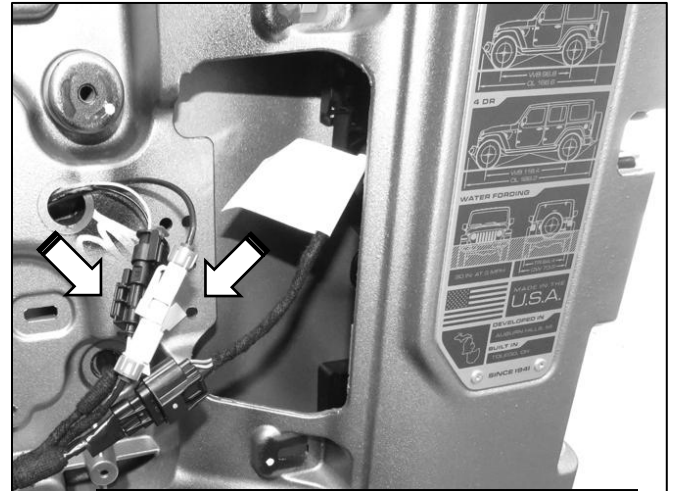
## TAILGATE REINFORCMENT PLATE 2018 JEEP WRANGLER JL

12. Next, tighten and adjust the 10mm hardware on the door hinge to properly align the marked line or tape from **Step 3, (Figure 6)**.
13. Do periodic inspections to the installation to make sure that all hardware is secure and tight.

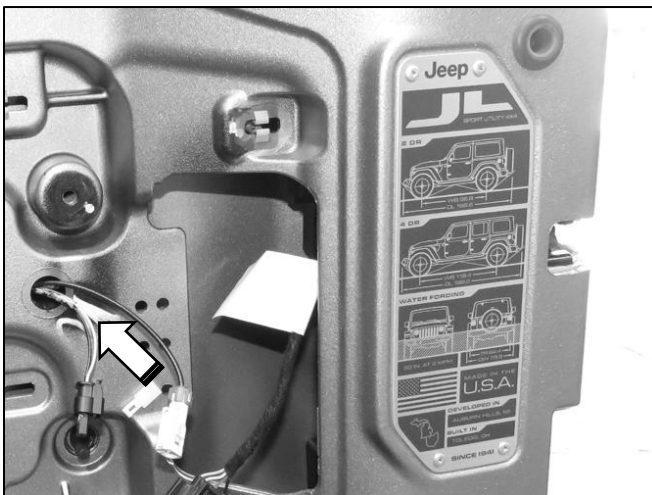
**To protect your investment**, wax this product after installing. Regular waxing is recommended to add a protective layer over the finish. Do not use any type of polish or wax that may contain abrasives that could damage the finish. Mild soap may be used to clean the Reinforcement Plate.



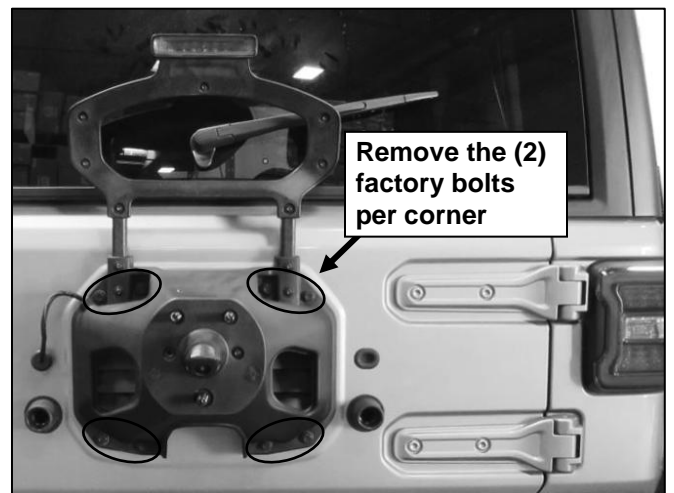
(Fig 1) Remove the (3) factory lug nuts to remove the Spare Tire from the back of the vehicle



(Fig 2) Open the tailgate and locate the camera and CHMSL, light, connectors

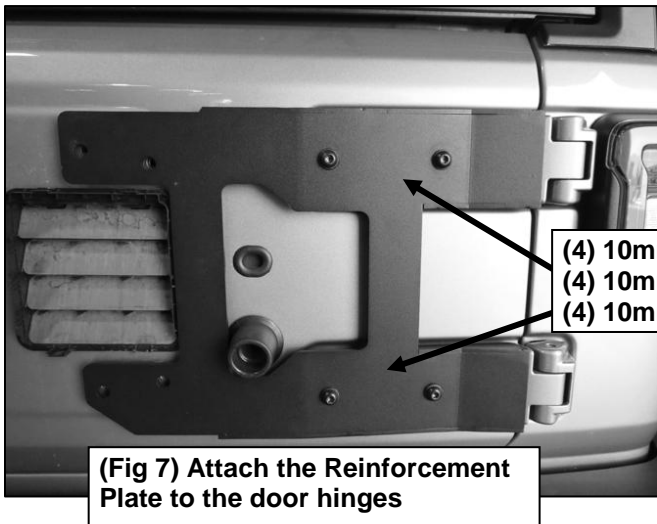
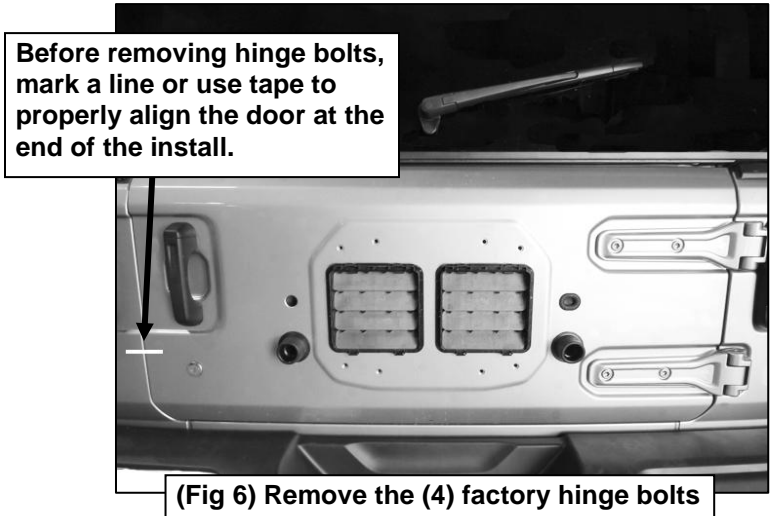
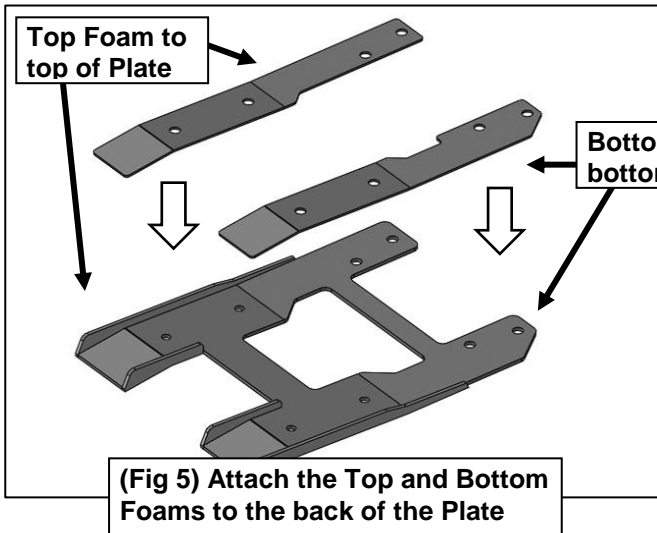


(Fig 3) Disconnect the wires and pull the wires out through the hole



(Fig 4) Remove the spare tire carrier from the tailgate of the vehicle

**TAILGATE REINFORCMENT PLATE  
2018 JEEP WRANGLER JL**



**IMPORTANT:** If installing the Spare Tire Relocation Kit also, then begin to follow the instruction sheet for that kit. Otherwise, continue with current instructions.

