



RUBICON EXPRESS 1900 EL CAMINO AVE., SACRAMENTO, CA. 95815 866-533-7706, www.Rubiconexpress.com

INSTALLATION INSTRUCTIONS FOR:
REA1015 2007-2013 JK Wrangler 2 Door Gas Tank Skid Plate
REA1016 2007-2013 JK Wrangler 4 Door Gas Tank Skid Plate

Safety Warning:

Suspension systems or components that enhance the off-road performance of your vehicle may cause it to handle differently, on and off-road, than it did from the factory. Care must be taken to prevent loss of control or vehicle rollover during sudden maneuvers. Failure to drive the vehicle safely may result in serious injury or death to driver and passengers. We recommend you always wear your seatbelt, drive safely and avoid quick turns and other sudden maneuvers. Constant maintenance is required to keep your vehicle safe. Thoroughly inspect your vehicle before and after every off-road use.

Installation Warning:

We recommend that certified technicians perform the installations of our products. Attempts to install these products without knowledge or experience may jeopardize the safety of the vehicle. These instructions only cover the installation of our products and may not include factory procedures for disassembly and reassembly of factory components. Read instructions from start to finish and be sure all parts are present before disassembling the vehicle. Included instructions are guidelines only for recommended procedures and in no way are meant to be definitive. Installer is responsible to insure a safe and controllable vehicle after performing modifications. Do not perform test drives on public roads with partially completed installations. Always double and triple check your work before use.

REA1015 KIT CONTENTS:

- 1 86-RM24194 Gas Tank Skid Plate: 2 Door**
- 2 90-9391 Nut Plate: Gas Tank Skid Plate**
- 2 70-0371001800 3/8"-16 X 1" Hex Bolt Gr. 8
- 2 73-03700536 3/8" Split-Lock Washer

REA1016 KIT CONTENTS:

- 1 86-RM24195 Gas Tank Skid Plate: 4 Door**
- 2 90-9391 Nut Plate: Gas Tank Skid Plate**
- 2 70-0371001800 3/8"-16 X 1" Hex Bolt Gr. 8
- 2 73-03700536 3/8" Split-Lock Washer

REQUIRED TOOLS:

Metric/Standard Socket Wrench Set
Torque Wrench

Installation:

1. Properly support the vehicle off the ground under both the frame and axles.
2. Remove the **OE** transfer case skid plate. Save the hardware for reinstallation.
3. Remove the forward **OE** gas tank mount bolts. Remove the **OE** side frame mounting bolt near the passenger side rear control arm pocket.
4. Test fit the, **RM24194 2 door**, or, **RM24195 4 door**, gas tank skid plate over the factory gas tank mount. Use the previously removed **OE** hardware to hold it in place.
5. Carefully, raise the rear of the gas tank skid plate up tight against the gas tank mount with a jack.
6. In the rear of the, **RM24194**, gas tank skid plate are two **3/8"** holes. Use these holes as an alignment guide to drill through the gas tank mount.

IMPORTANT: Take extra care to drill through gas tank mount only! In these locations the gas tank mount is double layered. **DO NOT** drill through the second wall.

7. Once the **OE** gas tank mount has been drilled, insert the nut plates, **90-9391**, into the gas tank mount pocket. Install the **3/8" X 1"** bolts and hardware into the nut plate and torque to **20 ft./lb.** Insert and torque the remaining **OE** hardware to the factory settings.

HINT: The **12mm** threaded holes in the cross member commonly strip out. Use a **1/2"-13** tap directly into the stripped hole for a simple and quick repair. That hole will now accept a **1/2"-13** bolt.

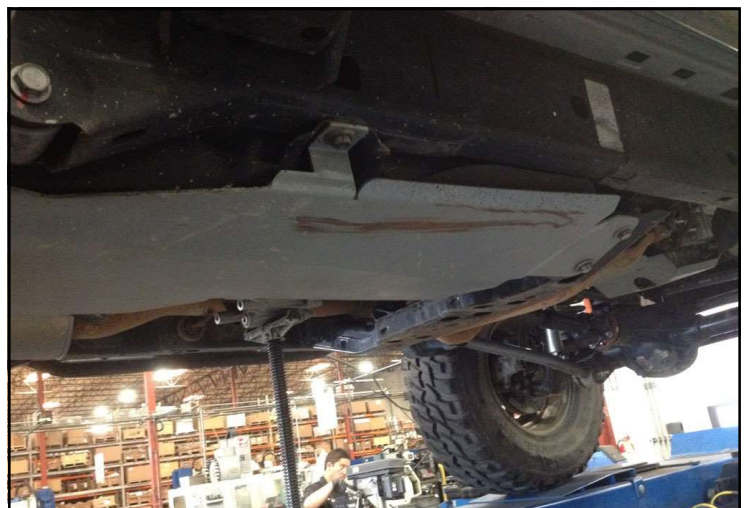
7. Recheck and re-tighten all bolts and straps after first 50 miles of driving.



(Photo #1)



(Photo #2)



(Photo #3)