



## #J9120 Installation Instructions 1997-2006 Jeep Wrangler TJ 1.25" Body Lift

### Read and understand all instructions and warnings prior to installation of product and operation of vehicle.

Zone Offroad Products recommends this system be installed by a professional technician. In addition to these instructions, professional knowledge of disassembly/ reassembly procedures and post installation checks must be known. Minimum tool requirements include the following: Assorted metric and standard wrenches, hammer, hydraulic floor jack and a set of jack stands. See the "Special Tools Required" section for additional tools needed to complete this installation properly and safely.

#### » PRODUCT SAFETY WARNING

Certain Zone Suspension Products are intended to improve off-road performance. Modifying your vehicle for off-road use may result in the vehicle handling differently than a factory equipped vehicle. Extreme care must be used to prevent loss of control or vehicle rollover. Failure to drive your modified vehicle safely may result in serious injury or death. Zone Offroad Products does not recommend the combined use of suspension lifts, body lifts, or other lifting devices.

You should never operate your modified vehicle under the influence of alcohol or drugs. Always drive your modified vehicle at reduced speeds to ensure your ability to control your vehicle under all driving conditions. Always wear your seat belt.

#### » TECHNICAL SUPPORT

*Live Chat* provides instant communication with Zone tech support. Anyone can access live chat through a link on [www.zoneoffroad.com](http://www.zoneoffroad.com).

[www.zoneoffroad.com](http://www.zoneoffroad.com) may have additional information about this product including the latest instructions, videos, photos, etc.

Send an e-mail to [tech@zoneoffroad.com](mailto:tech@zoneoffroad.com) detailing your issue for a quick response.

**888.998.ZONE** Call to speak directly with Zone tech support.

#### Difficulty Level

easy 1 (2) 3 4 5 difficult

Estimated installation: 1-3 hours

#### Special Tools Required

None

#### » PRE-INSTALLATION NOTES

1. Special literature required: OE Service Manual for model/year of vehicle. Refer to manual for proper disassembly/reassembly procedures of OE and related components.
2. Adhere to recommendations when replacement fasteners, retainers and keepers are called out in the OE manual.
3. Larger rim and tire combinations may increase leverage on suspension, steering, and related components. When selecting combinations larger than OE, consider the additional stress you could be inducing on the OE and related components.
4. Post suspension system vehicles may experience drive line vibrations. Angles may require tuning, slider on shaft may require replacement, shafts may need to be lengthened or trued, and U-joints may need to be replaced.
5. Secure and properly block vehicle prior to installation of Zone Offroad Products. Always wear safety glasses when using power tools.
6. If installation is to be performed without a hoist, Zone Offroad Products recommends rear alterations first.
7. Due to payload options and initial ride height variances, the amount of lift is a base figure. Final ride height dimensions may vary in accordance to original vehicle attitude. Always measure the attitude prior to beginning installation.

rev061313

## Kit Contents

Qty	Part
11	Body Lift Block
1	Bolt Pack - Body Mounts
2	Core Support Spacer
2	3/8" x 1" Bolt
2	3/8" Hex Nut
4	3/8" USS Washer
1	Steering Support Block
1	Steering Support Strap
1	Bolt Pack - Steering Support
6	Radiator Relocation Bracket
4	Bolt Pack - Radiator Relocation, T-Case Linkage
1	T-Case Linkage Bracket
1	Loctite



## INSTALLATION INSTRUCTIONS

1. Park the vehicle on a clean flat surface and block the wheels for safety. Place automatic transmissions in park and manual transmissions in neutral.
2. Remove the negative battery cable first, then the positive battery cable. If equipped, the Supplemental Restraint System will be deactivated when the battery is disconnected.

---

### » DISASSEMBLY

1. Remove the four bolts attaching the front plastic cover to the frame and remove the cover from the frame. **Figure 1** Save cover and hardware.



Figure 1

2. If equipped with factory auxiliary headlights on the front bumper, remove the two clips and wiring harness from the fenders.
3. Remove the radiator overflow hose and overflow bottle from the fan shroud and remove it from the vehicle. **Figure 2**

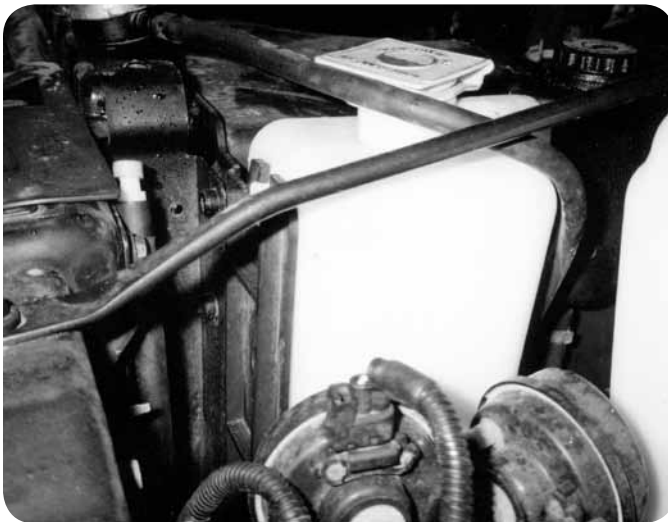


Figure 2

4. Remove the four bolts mounting the fan shroud to the radiator and move the shroud back toward the engine, off of the radiator. **Figure 3** Save hardware.

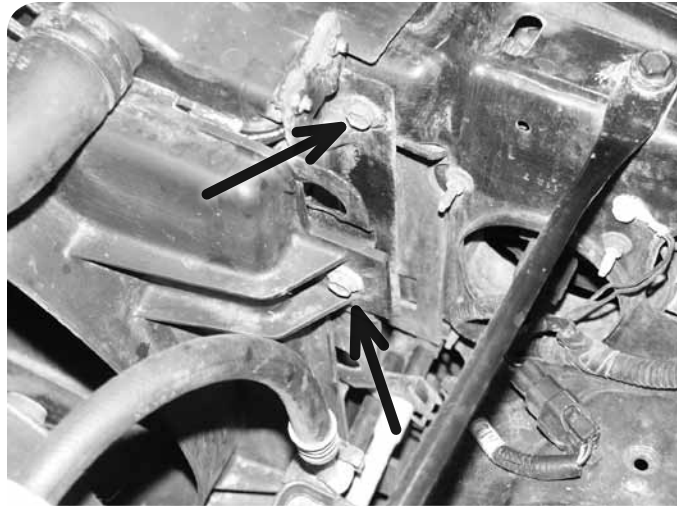


Figure 3

5. Remove the six bolts mounting the radiator to the core support. **Figure 3** Carefully rest the radiator against the fan. It will be relocated after the lift is installed. Save hardware.
6. Remove the two bolts mounting the steering shaft carrier bearing to the driver's side frame rail. **Figure 4**

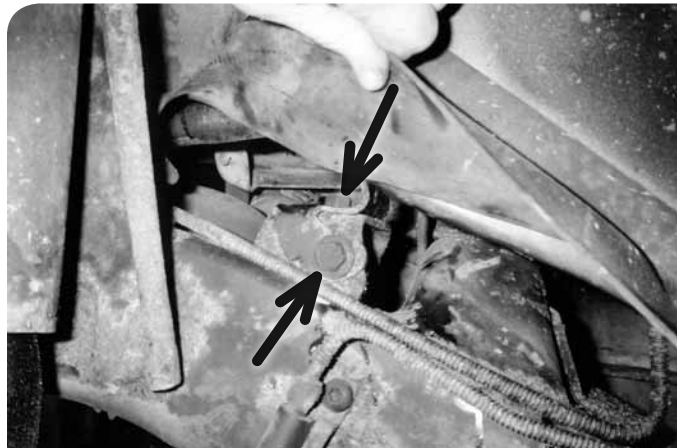


Figure 4

7. Pull back the carpet on the driver's side near the center console. Remove the four bolts with captive washers. **Figure 5** This will free the transfer case linkage bracket from the underside of the body. Save hardware.

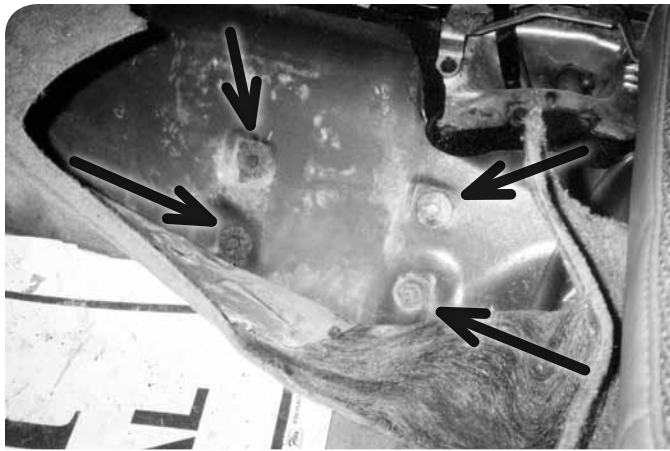


Figure 5

8. From underneath, pull down on the linkage bracket and remove it from the linkage. Remove the bracket from the vehicle. Remove the pivot bushing from the bracket. Save all hardware/parts. The relocation bracket will be installed later in the installation. **Figure 6**

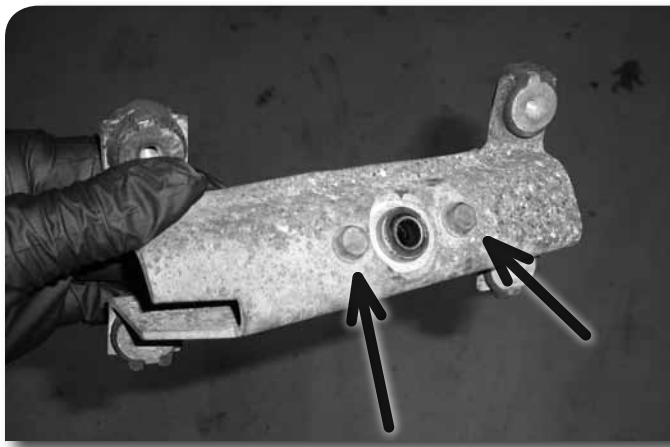


Figure 6

9. Remove the fuel filler cap and remove the four screws mounting the fuel filler neck to the body shroud. **Figure 7**



Figure 7

---

## » BODY LIFT

1. Loosen all body mounting bolts (11 in all) but do not remove.
2. Remove the body mounting bolts on the passenger's side of the vehicle and the front center bolt. Using a hydraulic jack and a wooden block, lift passenger's side of the vehicle up just high enough for the body spacers to be placed. The front center spacer will not be installed until the entire vehicle has been lifted. Watch for hoses or wires that may be binding or stretching while lifting.
3. Start but do not tighten the new mounting bolts. They are installed in the following locations with the factory bushings/washers:  
7/16"-14 x 4" with 3/8" USS washers in the mount over the rear axle and rear mount and 1/2"-13 x 4-1/2" with 7/16" USS washers in the three mounts along the frame under the doors. **Figure 8**

### Step 3 Note

All body mount hardware is located in hardware pack #209.



Figure 8

4. Repeat installation procedure for the driver's side of the vehicle and install the front center mount with a 7/16"-14 x 4" bolt and 3/8" USS washer..
5. Check body for correct alignment on the frame. Torque 1/2" hardware to 60 ft-lbs and 7/16" hardware to 40 ft-lbs. Use Loctite on all body mounting hardware.

---

## » ASSEMBLY

1. Install the six radiator drop brackets to the core support using the factory radiator mounting hardware. Mount the radiator brackets to the core support through the middle hole. **Figure 9A,B**
2. Mount the radiator on the relocation bracket studs. Fasten the radiator to the relocation brackets with 1/4" lock nuts and washers. Torque all radiator mounting hardware to 10 ft-lbs.

### Step 2 Note

Radiator mount hardware is located in hardware pack #704. There are (4) #704 packs included in the kit. (3) packs will be used for the radiator mount.

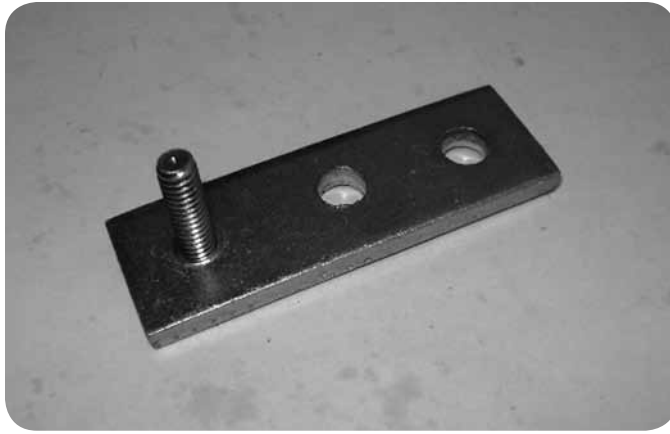


Figure 9A



Figure 9B

3. Install radiator fan shroud to the radiator with the four factory bolts. Tighten securely.
4. Install the overflow bottle and overflow hose to the radiator and fan shroud.
5. Mount the provided steering carrier bearing spacer tube between the steering carrier bearing and the frame. Attach with the 10mm x 60mm bolt through the original mounting hole in the carrier bearing, through the tube, and into the threaded hole in the frame bracket. **Figure 10** Do not tighten. Use Loctite on mounting bolts.

### **Step 5 Note**

Steering hardware is located in hardware pack #210.



Figure 10

6. Install the side strap on the frame with the factory bolt. Do not tighten.
7. Mount the side strap to the carrier bearing using a 7/16" x 1" bolt, nut and SAE washers. Figure 11



Figure 11

8. Tighten 10mm and 7/16" bolts to 30 ft-lbs.
9. If equipped with factory auxiliary headlights, reconnect and secure the wiring harnesses to the fenders with two zip ties.
10. Reattach the fuel filler neck to the filler shroud with the original screws. It may be necessary to loosen the hose clamps at the filler neck and fuel tank to gain slack in the filler hose to reconnect. Be sure the filler hose is secure on the tank and filler neck and tighten hose clamps. Reinstall gas cap.

---

### » FRONT CORE SUPPORT SPACERS

*There are two methods for installing the provided core support spacers. One method requires minor weld while the other is a bolt on application. Each method works equally as well so it will be the installers choice which one to use. Both are methods are outlined below.*

#### ***No Weld Method***

1. Remove the three screws holding the headlight bezels to the core support and remove the bezels from the vehicle. Figure 12 Save bezel and hardware.



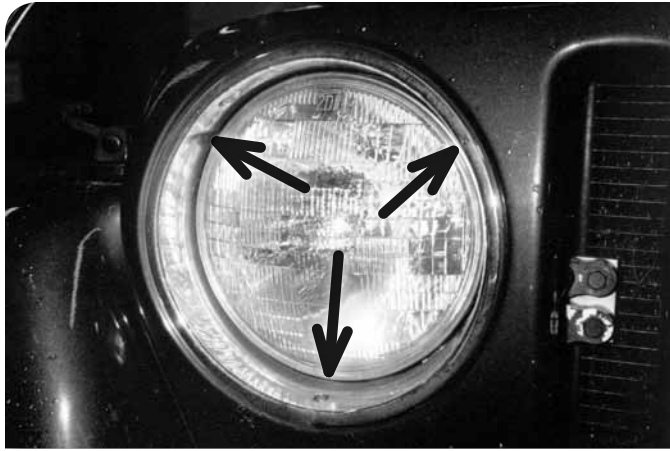


Figure 12

2. Remove headlight.
3. Pull the factory rubber core support bumpers from the bottom of the core support.
4. Locate the provided square core support spacers. Install a provided 3/8" x 1" bolt/washer through one of the holes from the inside out. Lightly grease and install the factory core support bumper into the remaining hole in the spacer. The bolt head will be inside the tube with the threads pointing out.
5. Attach the core support spacer to the original hole and fasten with a 3/8" nut and washer. The end of the bolt is accessed through the headlight hole in the grill. Tighten the 3/8" hardware securely. **Figure 13**



Figure 13

6. Reinstall the headlight and bezel.

---

## » **WELD METHOD**

1. Locate the provided core support spacers. These will be positioned between the frame and factory rubber core support bumpers.
2. Position the core support spacers between the frame and factory rubber support. Tack weld the spacer in place. Only enough weld to keep the spacers in place is needed. Allow the area to cool and paint to prevent corrosion. **Figure 14**



Figure 14

### Step 1 Note

Pivot bushing mount hardware is located in hardware pack #704. There are (4) #704 packs included in the kit. (1) pack will be used for the pivot bushing mount.

### »» TRANSFER CASE LINKAGE

1. Mount the pivot bushing to the relocation bracket with the provided 1/4" hardware. Mount the pivot bushing relocation bracket to the factory bracket with the factory hardware. Torque all mounting hardware to 10 ft-lbs. **Figure 15**



Figure 15

2. Install the modified bracket assembly in the original location under the floorboard by sliding the linkage rod through the pivot bushing. Fasten the bracket to the floorboard using the factory hardware. Torque hardware to 10 ft-lbs. **Figure 16**



Figure 16

3. Check the 4wd lever operation to ensure that there is engagement in all ranges. Adjust the linkage as necessary. Adjuster - Figure 17



Figure 17

---

## » POST-INSTALLATION

1. Install the Jeep front cover with the four factory bolts. Tighten securely.
2. Check torque on all hardware.
3. Reconnect battery cables. Connect positive first, then negative.
4. Retorque hardware after 500 miles.