

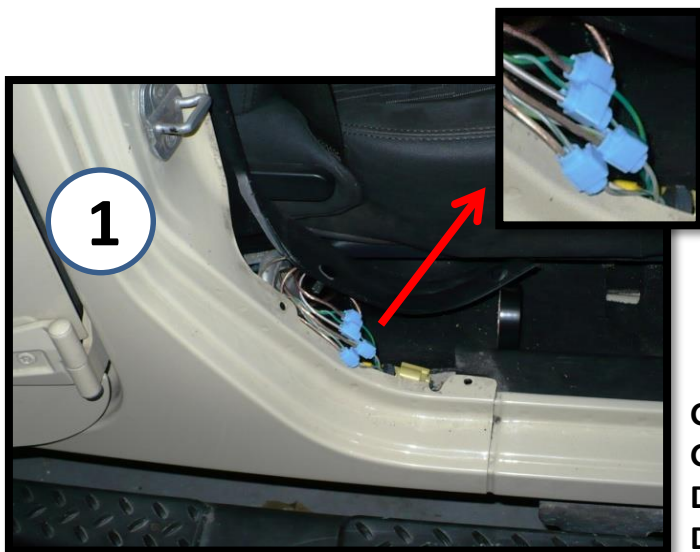
Select Increments™ Neo-Pod Install: Part A

First things first: Running the wiring for the Neo-Pod

These instructions follow installation of **#31649KL** Neo-Pod (the fully loaded version with amp, sub, etc.) in a factory Wrangler sound system with the basic 130 Radio, but can be used as a guide for other install types. Some connectors & hardware shown are included only with this #31649KL version. Install done with amplifier located under the Driver Seat.

***Those who purchased #31649KL** and are installing the pod in a factory stereo system, use the length of speaker wire contained in the *amp wire kit* for tapping into the factory speaker wires for signal described in #1.

Then use the provided 6' thicker gauge speaker wire you received in your #31649KL kit for powering the subwoofer.



If you have a factory radio, tap into the factory sound bars' speaker wires for signal. Do it here by the passenger seat. The wires are under the plastic trim. Pop out the two plastic rivets and remove some of the electrical tape. (Your wires will go under the carpet, over to the amp under the driver seat.) Follow the wire color code below, making sure to mark which wire is which for the amp (+/- and R or L).

If purchased the version with Kicker amplifier included, you have these blue lock wire connectors (shown).

WIRE COLOR CODE:

Gray with Light Green Stripe is Left Rear (+)

Gray with Dark Green Stripe is Left Rear (-)

Dark Green with Light Green Stripe is Right Rear (+)

Dark Green with Gray Stripe is Right Rear (-)



Now run these signal wires over to where the amplifier will be installed under the driver seat. Run them so they're clear of where the Neo-Pod will install. (It may seem like a good time to run speaker wires too, but that's covered in the pod install instructions since they need to be connected to the pod *first*.)

If using your own amp, it will have either a **High Level Input** with a small plug of wires, and/or a High/Low Level button and RCA inputs. Consult amplifier owner's manual for your specific amp.

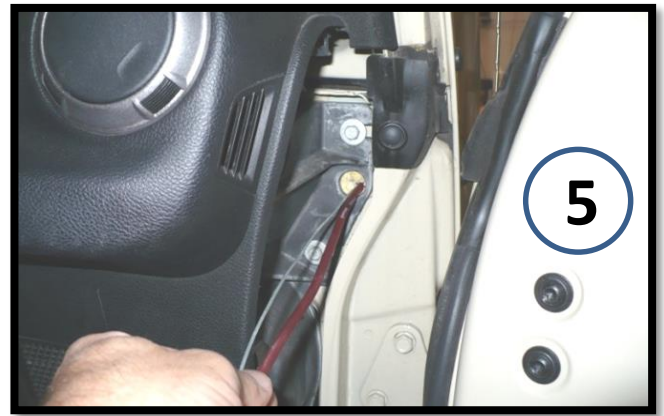
If you purchased the pod with the Kicker amplifier, specific RCA connectors you'll need are included. Make note of which wires are left, right, pos.+ and neg.- wiring them as indicated on the RCA housings, and you must have the button on the Kicker amplifier set for High Level input.



Amplifier Ground: An easy connection is already right under the Driver seat (which is great since you want the Ground wire as short as possible). It's up by the inner seat bracket on the uphill slope of the floor, and it already has some other factory grounds on it. Use a 10mm wrench to loosen the nut and use a ring terminal on the amp ground wire. Ground Wire must be connected to amp prior to attaching Power and Remote Wires to amp!



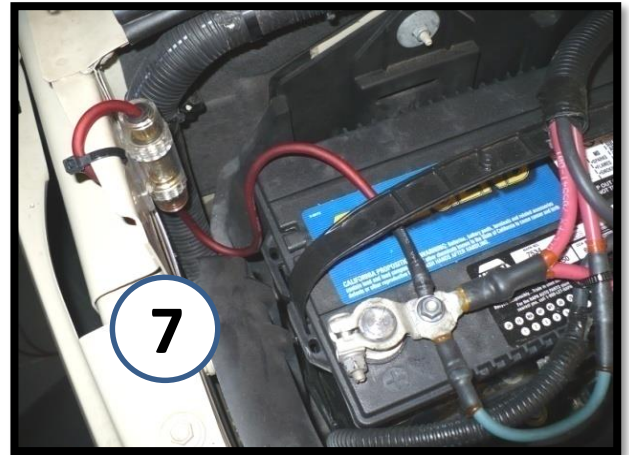
Amp Power Wire: Pop off this little side panel on the passenger side dash with a flathead screwdriver. It pops off easily. (This is the panel in later models).



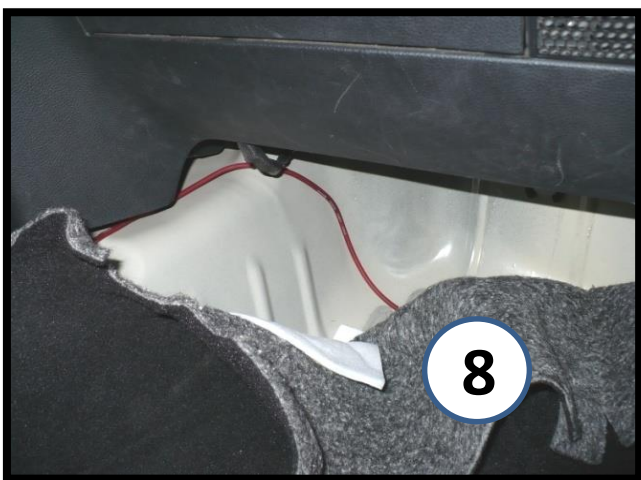
Behind it is a little hole that has foam in it. Use a piece of wire such as a coat hanger with the power wire taped to it and poke it through.



Power wire will pop through here. Note: if you're adding other amplifier(s) for other audio upgrades you should run separate Power wires for them.



Fuse holder can be mounted by battery as shown. **Don't connect the power wire to amp unless amp ground wire is already connected so amp is grounded!**

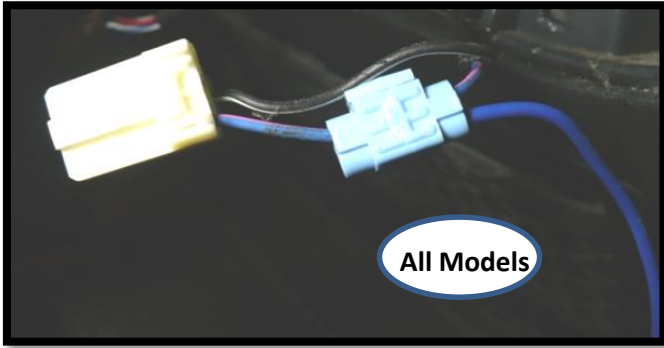


Run Power Wire under carpet in passenger foot area and feed it under center of dash on top of metal hump until it exits over in the driver foot area. Pull all excess wire over and leave it there for now and let's move on to both the Amp Remote Wire and the Remote Bass Level Controller.



It's a good idea to first decide where you want to install the Remote Bass Level Controller. You don't want to actually screw it in place yet, just find a place you'll want it. Shown is a good spot in the later model JK Unlimited, for example. Earlier '07-'10 models can have similar placement. Taking time to properly **mark where the screw holes will go** with a pencil, pick-all, etc. will go a long way and ensure you're happy with its' location and function for many years.

Amplifier Remote wire steps:



All Models will access a similar wire in the dash in the steps below to connect the amp's remote wire*.

All models will tap into a blue wire with a pink stripe. Note: if you're adding other amplifier(s) for other audio upgrades, you only need to run this single Remote wire over to the amp(s) and can then splice into it for additional short runs to other amp(s). Many amps won't turn on and use power from the battery until it gets power from this wire - And this wire is 'switched' - has power when the key is in the ON or ACCS. position.

* If purchased with **Kicker amplifier included**, you can skip this *if* you're using a factory radio and tapping into the sound bar wires for signal (1st page). The Kicker amp design will sense to turn on by signal in those sound bar wires... no remote wire hookup would be necessary...Cool!

For '07-'10 Models:

Pop out the cigarette lighter housing on the left. Use a small pick or tiny flathead and gently push in the tabs just behind the face of the lighter flange and it can pop out. This is easier than removing the entire dash piece. The blue wire with pink stripe is the wire you want to splice into for the Remote Amp Wire. You can feed the wire down behind the panel and into the driver foot area, under the carpet for now.

And at the same time, you can install the **Bass Level Controller** if you're placing it near the lighter. A small hole can be drilled in the dash that's large enough to allow the wire end to pass through, and the controller can be screwed to the dash, maybe under a climate control dial. Taps of a hammer with the point of a pick-awl on each mark you made for the Controller's mounting screws will help give you a start on getting the screws into the plastic. Once mounted, the wire can then be brought down behind the panel like the Remote wire. If you are placing the controller elsewhere, you simply need to mount it, hiding the wire to your liking, and bring the wire down to the driver floor area for now.



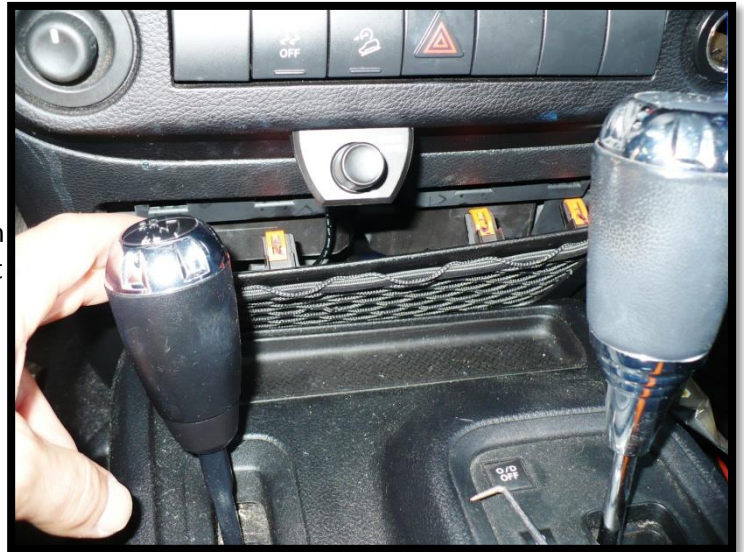
For '11-'18 Models:

Pop out window switch panel with a good tug and unplug it. Then remove the single screw (big arrow). This allows you to pop off the top piece of the dash somewhat (the piece with the vents) so you can pop off the lower AC Control piece that has the 12V outlet. The lower panel is piggy-backed to the top vent piece with plastic mounts at the circles in the picture and you need to slide it off them. You can then pull it out and unplug everything to gain better access to the outlet wiring. The blue wire with the pink stripe on the back of the 12V outlet is the one you want to tap into for the Amp Remote wire. The wire can then feed down behind dash panel and over to the driver side foot area for now. While you have the dash panel off, find your marks you made for the **Bass Controller** and screw it in place since you can now easily get to that part of the panel with a drill and screwdriver. Use a tiny drill bit to pre-drill holes for the screws and screw it in place.

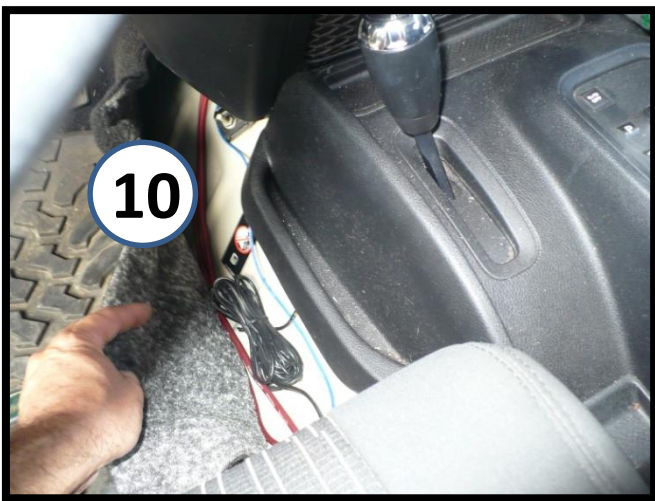


For '11-'18 Models (continued):

With Remote wire completed and controller in place, you can re-attach all plugs and pop the dash panels back in place, including the power-window panel. To feed the wire for the controller, pop of the mesh panel piece shown and push wire through until you can grab it over to the left under the carpet. Then pop the panel back on, it can snap back in place right over the wire just fine.

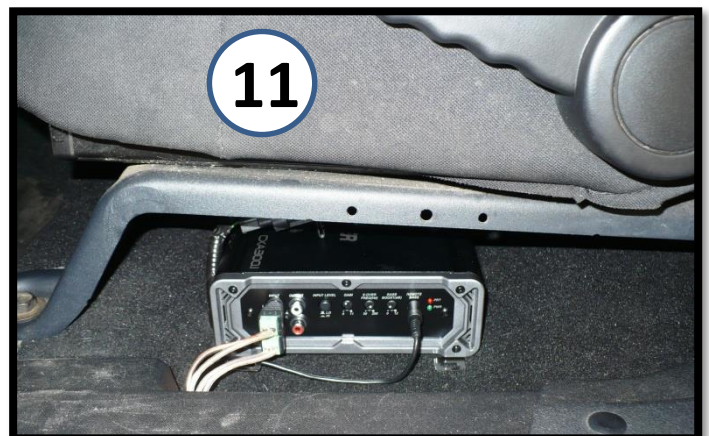


ALL MODELS



Bring the Remote, Bass Level Controller, and Amp Power wires under the carpet, between driver seat and center console so they can come up from under the carpet under the driver seat. The excess wire for the Bass Controller can be wound up and placed as shown without affecting the carpet. All wires can then come up where the other factory wiring for the seat exits, or you can cut slits in the carpet exactly where they will need to be for the amp.

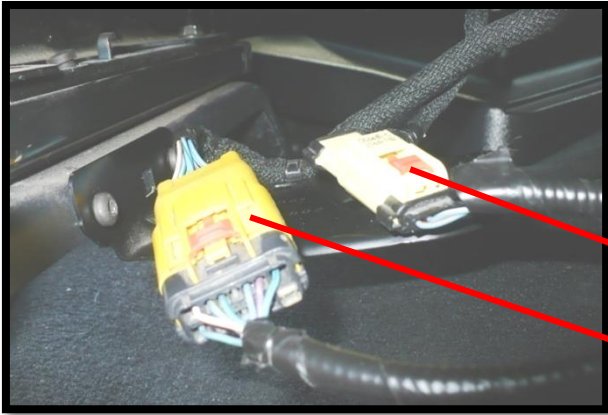
A look at the amplifier in its' final resting place under driver seat. (Easy access to the controls in this configuration.) Tuning the Kicker amp & sub, we found our settings ended up at a little more than halfway up on the gain control, and the bass boost at about two-thirds up. We left the Xover at 200. A good place to start your tuning, if nothing else. When tuning, try FM stations too... FM stations are being pulled in versus CD, MP3, smartphone, etc. which are produced internally, so the sound reproduction for FM stations typically is not as good. Including them in fine tuning will help you decide on your settings.



Install: Part B

Clearing a path for the Neo-Pod (to be done after completing Part A wiring installation sheet)

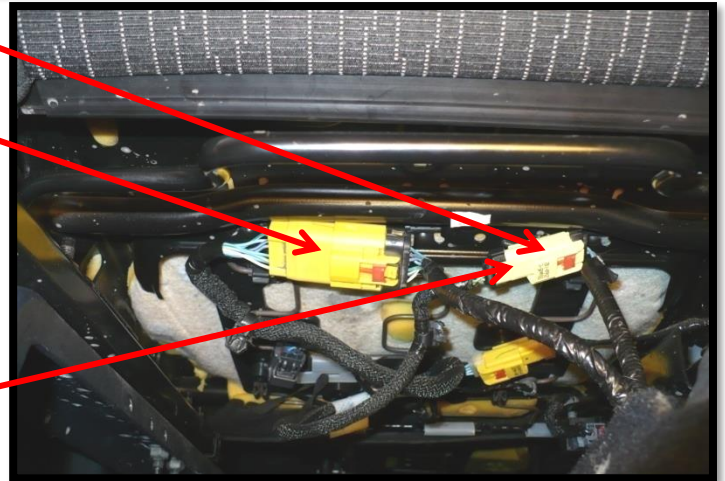
Different model Wranglers from different years will have different wiring and wire-plug configurations. The images below will cover most scenarios and the goal is to situate any plugs and wires so they're out of the way of the pod. You can do this **and install the pod without ever removing the seat!** Always check for *full seat slider movement* as you work to ensure wires aren't stressed/tight at seat-sliding maximum positions.



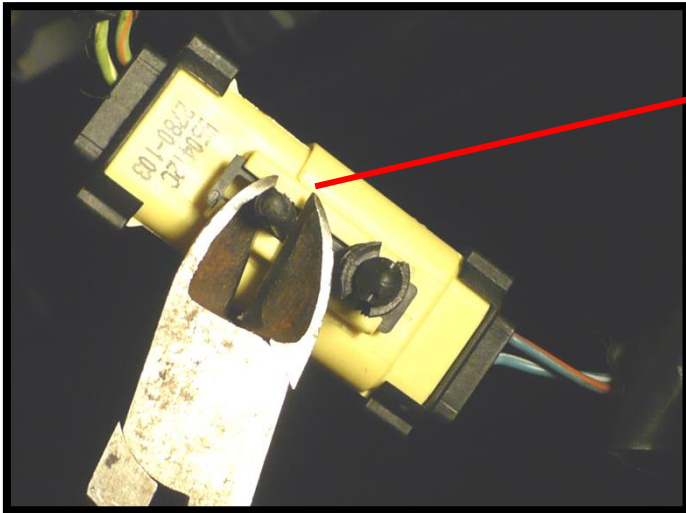
'11-'18 models likely have this bracket & plugs.
Pop off the plugs and remove the bracket.



The screws are Torx T30, but if you don't have a torx bit, they remove pretty easily with a thin flathead screwdriver.



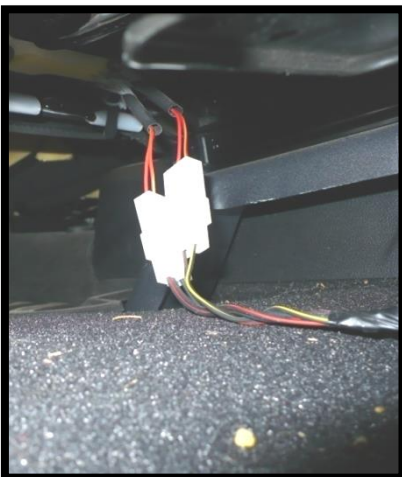
The plugs can conveniently pop in existing holes on the underside of the seat as shown.



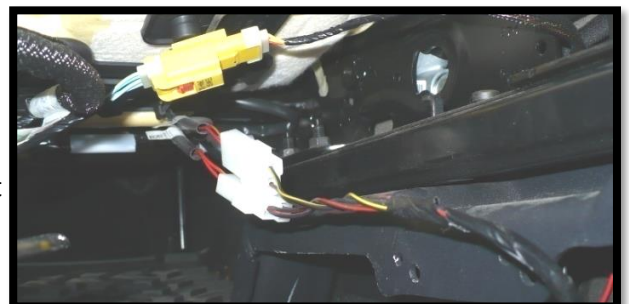
Remove the non-ribbed tab with snips to get this plug even further out of the way and for better staying power.



A cable tie can hold the excess wire lengths to the spring work of the seat bottom, (**check for full seat slide ability front to back**).



Heated Seats: wires can be moved along the inside frame rail and cable tie(s) can hold them out of the way. **Again, check for full slider movement with no stress on the wires.** And they should not come in contact with the pod when it's installed (to avoid any vibration).





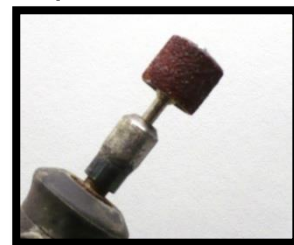
Earlier '07-'10 models tend to have less wiring to move around and some models may have only a single plug & wire as shown above. Popping the plug out of it's position (left) and resting it in the little bracket (right) gets it out of the way. **Again, check for full slider movement with no stress on wire lengths.**



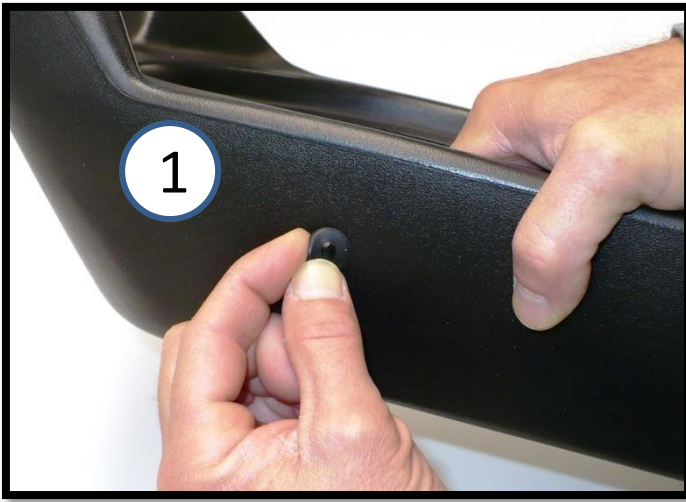
Last thing to do for clearing a path is to make sure the carpet is in factory positioning, nicely hugging the metal floor, and to check this plastic nut that holds the carpet in place under the passenger seat. Often, the "threads" of plastic that hold onto the metal screw coming up through the floor can get bent out of shape and not hold as well. Unscrew the plastic nut and inspect them. If they need to be bent back the other way, a flat-head screwdriver can do the trick. Just push them back down the other way until they look like they can hold on nicely and keep the nut in place. The goal is to get them to grab the metal screw so the plastic nut stays low. Gently screw it back in place and it should stay out of the way of the pod. The pod has a nook in it designed to accept this piece, but it shouldn't touch it, which could cause a vibration in some instances.

Install: Part C

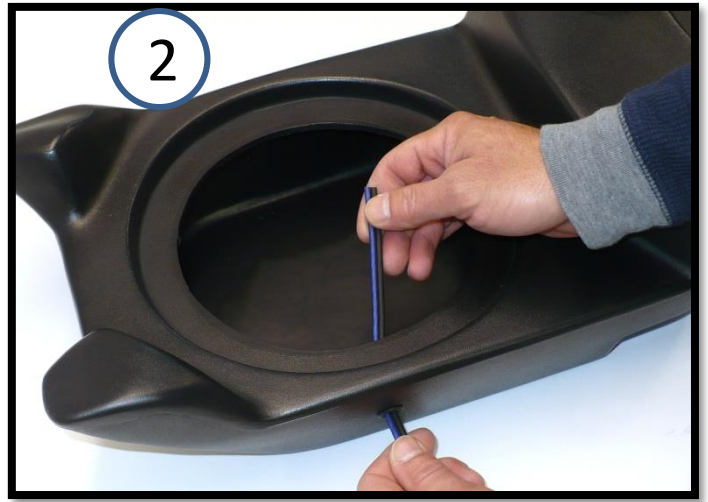
Installing the subwoofer in the pod



If you're using your own shallow-mount subwoofer, check to see if it drops in the pre-cut hole. Some subs may need the hole enlarged, which is done easily with a sanding drum on a rotary tool like a Dremel®. The pre-cut hole must be made at about 7" diameter to accommodate those subs with smaller mounting diameter requirements, so your sub may need the hole a little larger. You can use a magic marker or a pencil to mark the plastic all the way around as a guide.



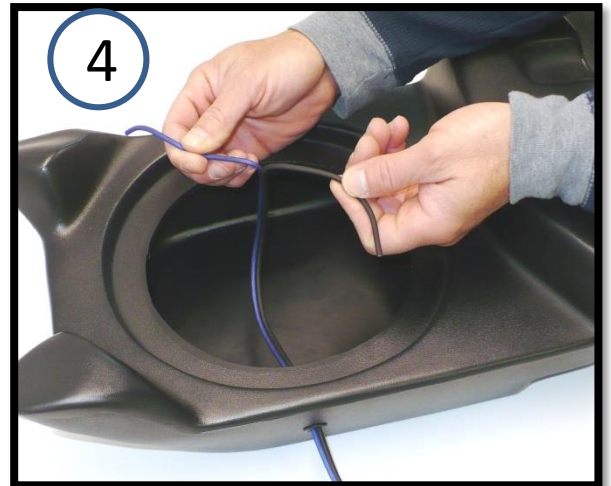
1
Install the rubber grommet in the pre-drilled hole on sidewall of the pod by pushing it in while picking it through from the inside with your other hand.



2
Pull speaker wire through grommet. (If purchased #31649KL with Kicker sub and amplifier, use the included section of thick speaker wire **not** contained in the amp wire kit.)



3
If purchased with Kicker sub included, we recommend wiring it for **4 ohms**.



4
Pull wires apart as much as needed to connect pos.+ and neg.- for your particular subwoofer.



5
Showing Kicker shallow-mount sub wired in **4 ohm** configuration as example.



6
Gently pull excess wire while dropping sub into pod. Situate to avoid wires touching sub frame or pod walls as best as you can.



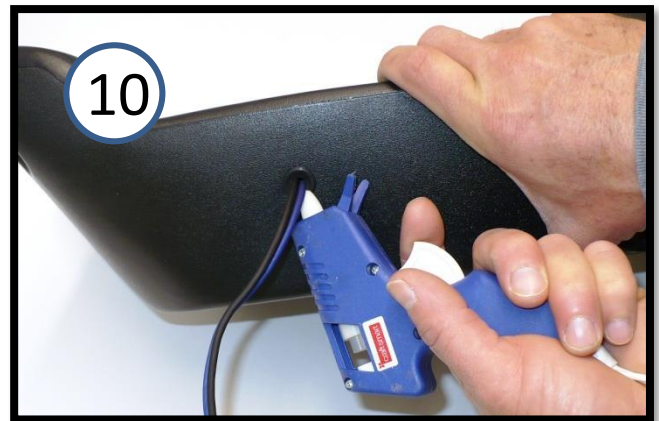
Make sure subwoofer is centered in the recess. If using your own shallow-mount sub and it hits the top inside of the pod, some foam gasketing could be used to "lift" the sub further away, but doing so *too* far may make cone excursions hit carpet once installed. All is unlikely since most 8" shallow mount subs will fit fine.



When screwing sub in place, using a drill is good for starters, but fast, powerful drills could strip out the plastic when the screws start to get tight... so...



...as the screws get tight, finish them with a screwdriver so you can hand-tighten them. You want them tight so no air can escape (makes funky sounds), but some drills just are too powerful.



Use a glue gun or wax, etc. to fill any air gaps where wires exit pod to ensure an airtight, sealed enclosure and avoid any whistling noise.

Assuming you did all the other wiring in the vehicle already (Part A), it would be a good idea lay the pod on the rear seat, sub facing upward, and connect it to test for leaks. You should not hear any air escaping and shouldn't feel any air escaping down in the sub recess. If you do, the screw in that area most likely needs to be tightened a little. While sitting on the back seat, the sound from the pod will be good, but not near as good when it's installed under the seat, firing off the floor as it's designed to do. You'll want to have a helper to cover the (3) pre-drilled floor mounting holes with you fingers.

Install: Part D

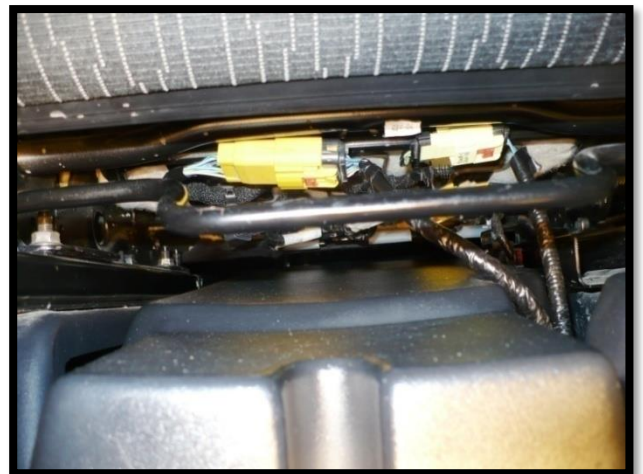
Attaching Neo-Pod to Jeep floor



With seat all the way forward and the carpet in flat, factory positioning, angle pod in as shown, getting that “wing” (with the Neo-Pod logo) around the right seat frame/leg. The pod then easily slides up in to position. If vehicle has no carpet, you need to put some little pieces of carpet or foam, etc. under the rear legs and everywhere up front the pod would normally rest on carpet to lift the pod to correct height - necessary for screws used to mount pod (screw length and undercarriage) and to isolate the pod so there are no vibrations off the metal floor.



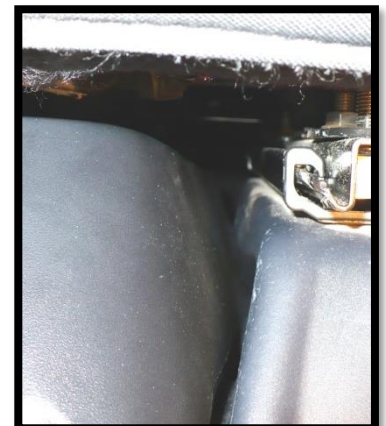
Leave the length of speaker wire over here for now. Lifting the carpet to hide the wires now may leave some weird rise or kink in the carpet where the sub fires. Best to wait until the pod is screwed down and holding the carpet in place much more.



Top of pod should be clear of any obstructions.



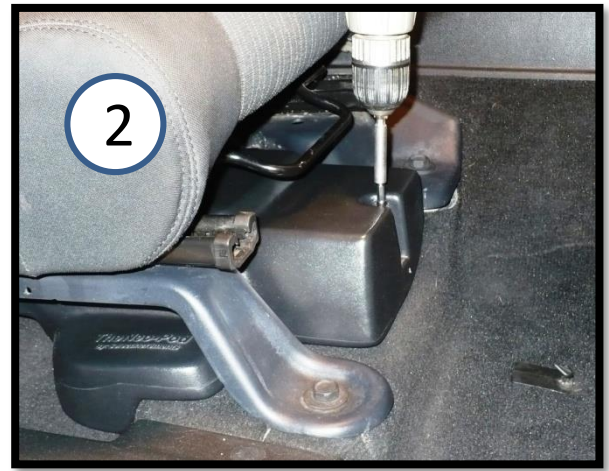
If your model JK has the two big looms of wires shown right of the pod here, they can and will touch the side of the pod similar to shown. You should have full seat slider ability, all the way forward, all the way back, without stressing wires.



Sides of pod should not be in contact with any brackets, seat legs, etc. Rear pod legs should be centered between seat legs, not touching anything.



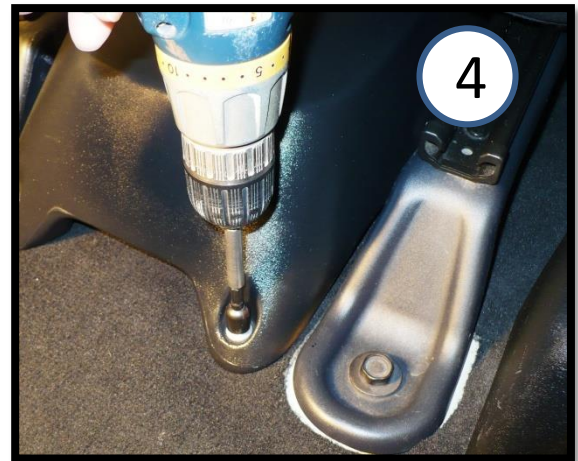
We're going to start with the forward screw first. In photo, left hand is gently pushing pod forward, toward front of vehicle, while right hand is gently pushing pod toward driver seat. This is how to get pod in place for the front screw. Carpet in area under right hand may move toward front of vehicle somewhat, so may need to use palm to hold it back.



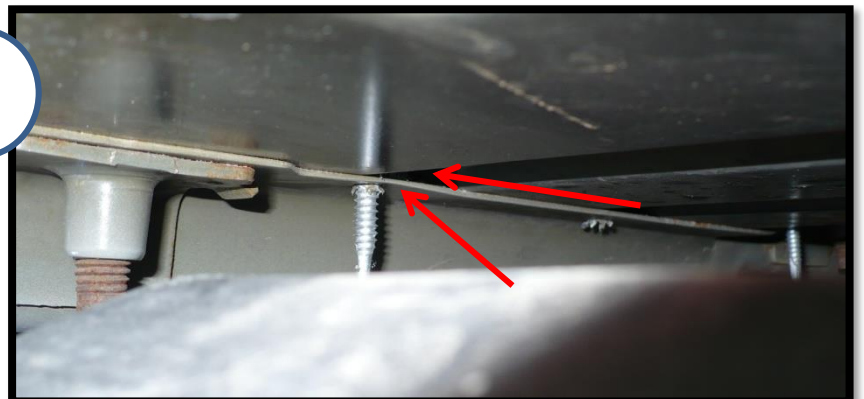
Using a 3/8" hex drive and a small extension, run screw through carpet and metal floor. Expect the back of the pod to rise up some as this screw is tightened. Don't over-tighten, as the metal floor is not super-thick. You won't see screw come through anywhere underneath jeep because there's a hollow area and then another layer of metal it doesn't go through.



With the front screw in, the pod needs to be centered between the seat legs (arrows).



Right rear leg screw is next. This one goes in much like the front one did.



Last screw is the left rear leg. This one will feel a little different than the others because it goes through **two** different layers of metal spaced slightly apart. The photo shows the screw coming through the second layer. The hollow area in the shadow above is hiding the first layer (the metal your carpet is resting on). So, you'll feel the screw go through that metal, hit and stop at the next layer. Keep drilling and it'll go through.



Last is to run the speaker wire over to your amplifier, located under the driver seat. As the wire exits the pod it's easiest to tuck it up under the center console...



...and bring it up basically at the other side of the console. In this photo, we've opted to cut slits in the carpet so all wires exit right at the point they connect to the amplifier.

Now it's time to do some sound tests. Be sure to listen to a variety of music and remember that songs played from an FM station versus ones from CD, phone, etc. won't sound as good because the signal is being pulled in from the airwaves, not produced internally. If you got the Neo-Pod with Kicker amp and sub (#31649KL), you'll find that remote bass level controller you installed on the dash is awesome and will use it a lot. If you are using your own amp and it's equipped to take a remote bass controller, it is highly recommended. (Much better than relying only on the bass adjustments that can be done with the head unit alone.)



Select Increments™
4WD AUDIO

Select Increments™

Landline (no texts) : 610-345-9044

Email: admin@selectincrements.com