



TUBULAR FENDER FLARES

(2007-2018 WRANGLER JK)

INSTALLATION INSTRUCTIONS

CONTENTS

- (2) Front Fenders
- (2) Rear Fenders
- (1) Hardware Kit
- (4) Foam Strips
- (2) LED Lights
- (2) LED Light Brackets

TOOLS REQUIRED

- Flat Head Screwdriver
- Trim Panel Removal Tool
- Metric Socket Set
- Drill & Drill Bits

STEP 1

Begin by removing the factory fender liners, there are (5) 10mm bolts. Disconnect the factory marker light harness from the light and zip tie it out of the way. Remove the factory fender flare by firmly pulling it away from the vehicle, starting from the front of the fender and working towards the rear.

STEP 2

Install the supplied foam on the back side of the Barricade Flat Fenders as shown above.



STEP 3

Mount the lights on the fender light bracket using the provided phillips screws

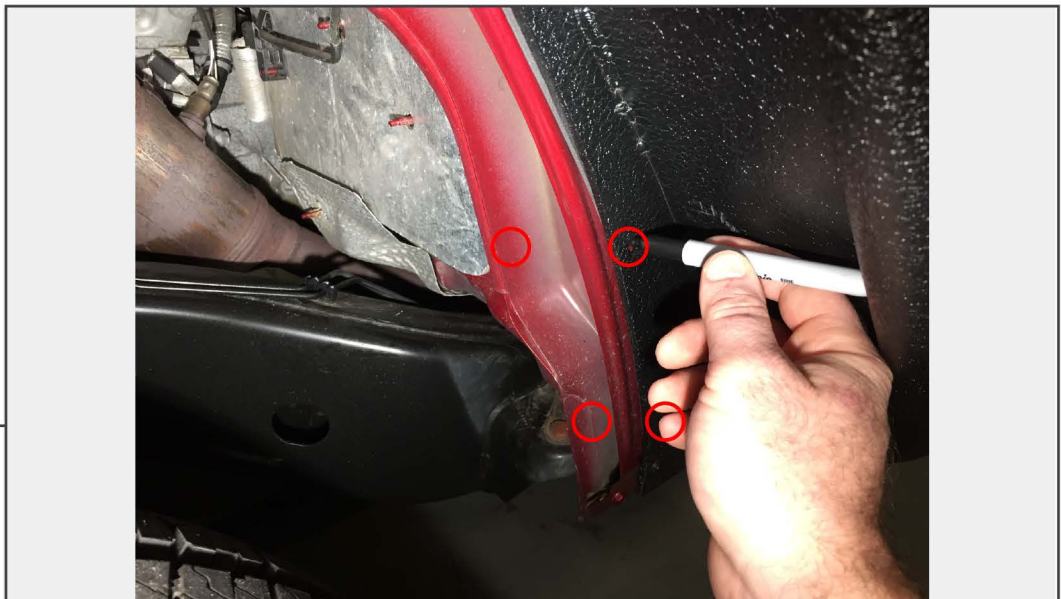


STEP 4

Mount the light/light bracket assembly to the fender using the supplied allen bolts and washers.

STEP 5

Install the Barricade Flat Fenders using the supplied M8 x 1.25 25mm long allen bolts, install the forward most (5) bolts first. Loosely install all hardware before fully tightening bolts to ensure proper bolt hole alignment.

STEP 6

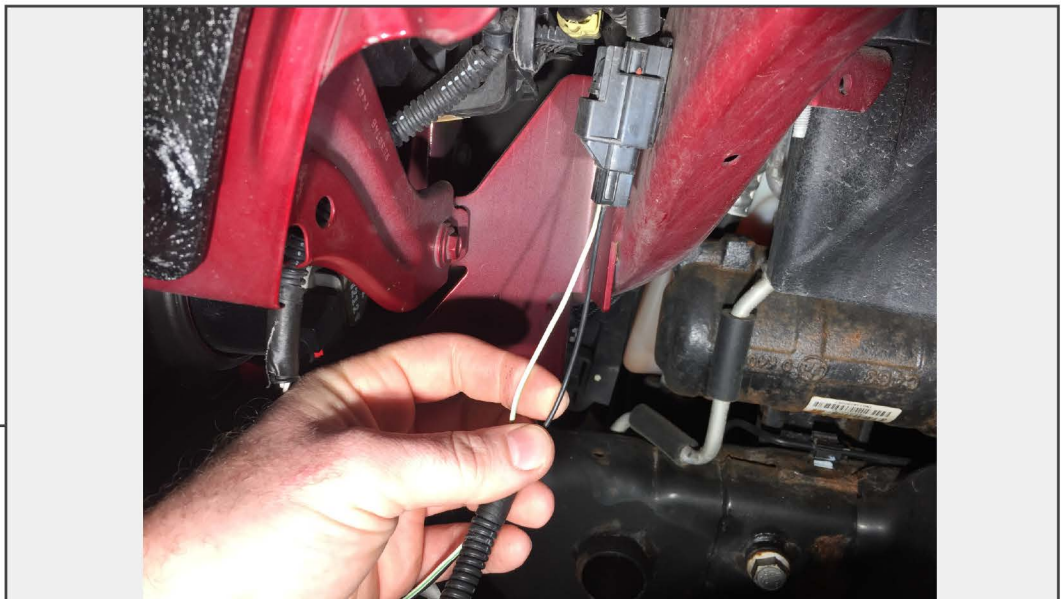
Clearly mark the holes for drilling. Remove the fender for ease of drilling. Using a 11/32" drill bit, drill the (2) rear holes on the front fenders. Be sure to keep the drill level and drill through both the outer and inner fender. Treat any exposed metal with touch up paint or clear nail polish.

**STEP 7**

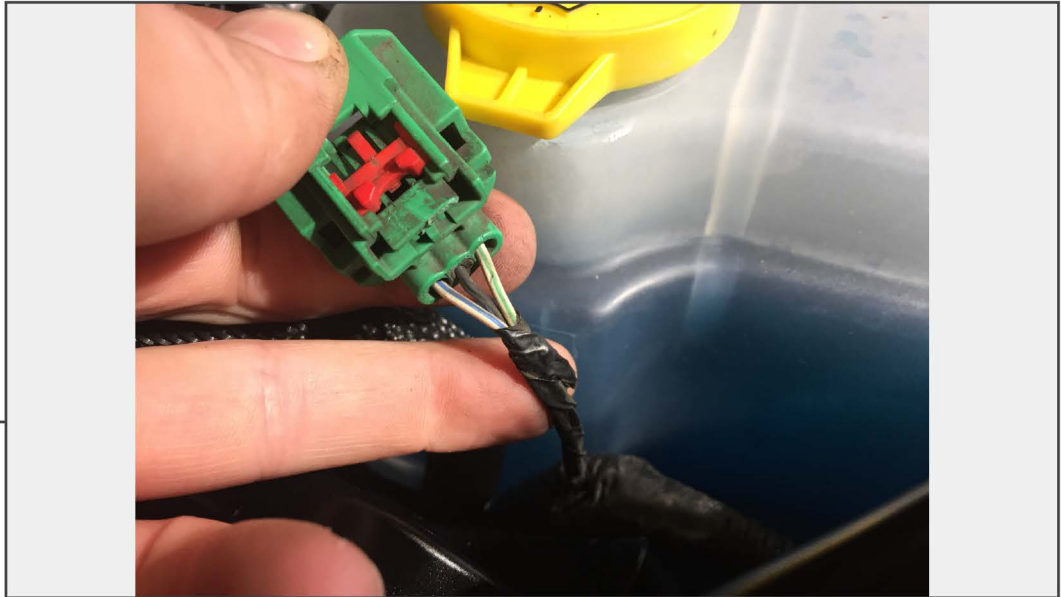
Install the supplied spacers between the inner and outer fenders using the M8 x 1.25 120mm bolt for the long spacer and the M8 x 1.25 65mm bolt for the shorter spacer.

LED LIGHT WIRING: The lights can be wired to either illuminate with the marker lights or with the low beam headlights. You will need to splice the LED wiring into either the wiring for the fender mounted marker(A Below) light or into the headlight wiring (B Below). The black lead off of the LED light will get connected to a ground, the gray lead will be wired to switched 12v+.

OPTION A



Located the fender marker light wiring harness, with a test light determine which wire is the 12v+ and which is the Ground. Using wire connectors, either splice or crimp the LED wiring leads to the appropriate wires in the fender marker light wiring harness.

**OPTION B**

Located the headlight wiring harness, with the low beam headlight switched on, use a test light determine which wire is the 12v+ and which is the Ground. Using wire connectors, to splice the LED wiring leads to the appropriate wires in the head light wiring harness. Tape/shrink wrap any wiring connections to protect them from the elements. secure any loose wiring

TROUBLESHOOTING: If the LED light stops working at any time, first check the fuse for the wire you tapped into is in working order. Then ensure that the wiring connections are sound. Wiring connections can look good but the connections may not necessarily be completing the circuit. Always make sure that the light is getting the appropriate voltage on the LED side of the wiring connection.

STEP 1

REAR FENDER FLARE INSTALLATION: Using a flat head screw driver or trim panel removal tool, remove the (5) push clips holding the rear fender liner to the vehicle. Then, firmly pull the stock fender away from the vehicle moving from front to back.

STEP 2

To install the supplied rivnuts, start by enlarging the (8) factory holes circled above using a 23/64" drill bit. Treat any exposed metal with touch up paint or clear nail polish.

STEP 3

Using the supplied handle and long M6 x 1.0, install the rivnuts. Hold the rivnut in place with the handle and tighten the rivnut securing it to the vehicle. **RIVNUTS ARE MORE SUSCEPTIBLE TO STRIPPING, DO NOT OVER TIGHTEN THEM.**

STEP 4

Install the supplied foam to the fender before installation.



STEP 5

Install the M6 x 1.00 25mm bolts with the supplied washer and lock washer on all locations with the installed rivnuts.