



FRONT BRAKE LINE EXTENSIONS

(2007-2018 WRANGLER JK)

INSTALLATION INSTRUCTIONS

CONTENTS

(1) Set of Front Brake Lines

TOOLS REQUIRED

Line Wrenches
10mm Socket
Ratchet

SKU # J106868

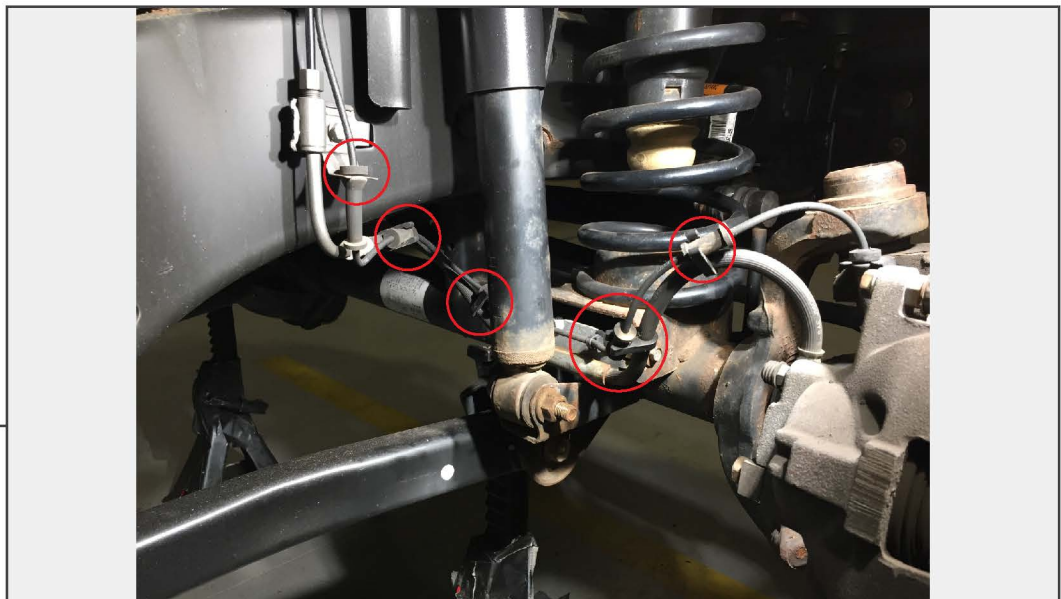
STEP 1



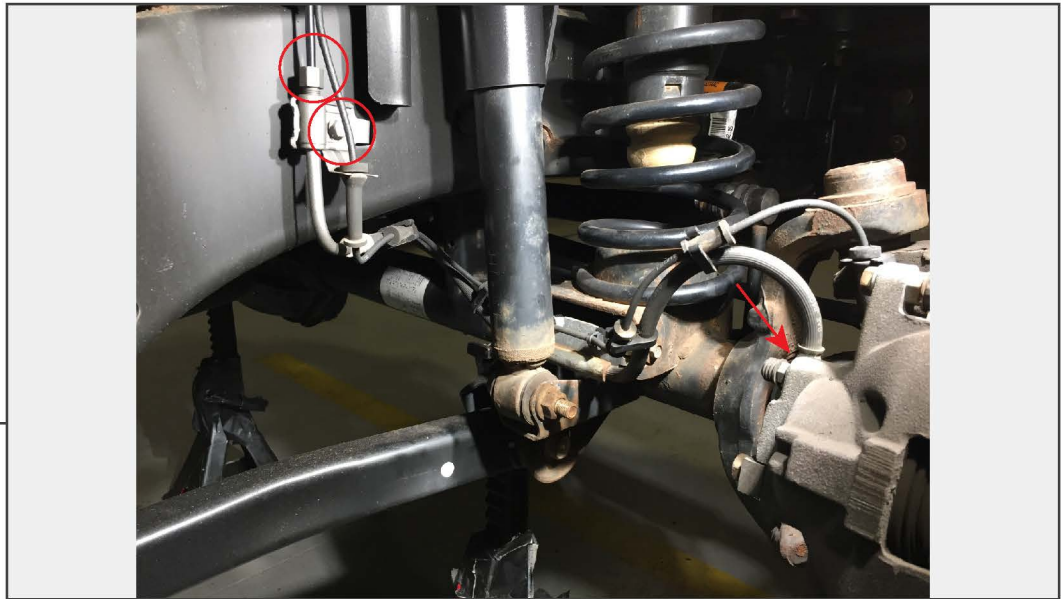
Raise and support the vehicle. Remove the front wheels for better access to the brake lines.

Remove the 10mm bolt holding the brake line bracket to the axle.

STEP 2



Remove the ABS wiring clips from the factory brake line.



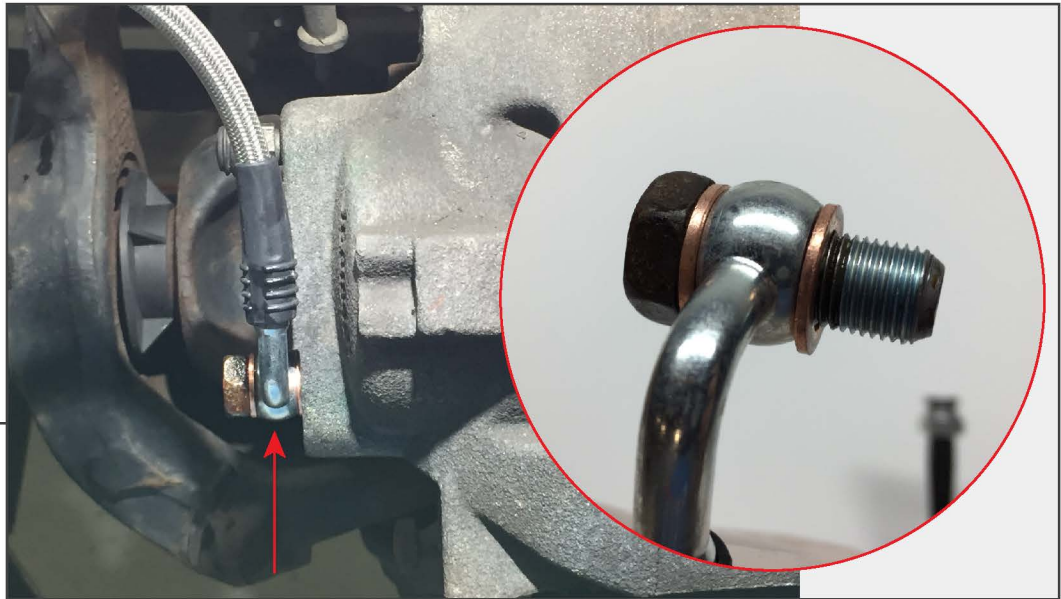
STEP 3

Loosen and remove the rubber brake hose from the steel hard-line. Remove the factory bracket and unbolt the brake hose from the caliper. Discard rubber brake hose and bracket.



STEP 4

Install the supplied bracket to the vehicle using the original bracket bolt. Slide the collared end of the extended brake line through the bracket. Using the supplied clip, secure the new brake line to the bracket. Install the factory steel hard-line into the new brake line.



STEP 5

Using the original banjo bolt, install the new copper crush washers and install into the caliper.



STEP 6



Ensure to bleed the vehicle braking system before driving to ensure proper functionality.

Secure the ABS wire to the new brake line using zip ties.

Repeat steps 1-6 for the remaining brake line.

Ensure to bleed the braking system after brake lines are installed to ensure proper functionality.

Installation is now complete.