



DEMON STYLE HALO HEADLIGHT INSERTS

(2015-2020 All)

INSTALLATION INSTRUCTIONS

CONTENTS

- (2) Lights
- (6) Phillips Screws
- (4) Scotchlok Connectors
- (4) Male Spade Connectors

TOOLS REQUIRED

- Phillips Head Screwdriver
- Trim Panel Removal Tool
- Pliers
- 7-10mm Socket and Ratchet

STEP 1



Begin by raising and supporting the front of the vehicle using a jack and jack stands. Open the hood and remove the radiator trim panels. Pull the panels up in the center and then away from the fenders.

STEP 2

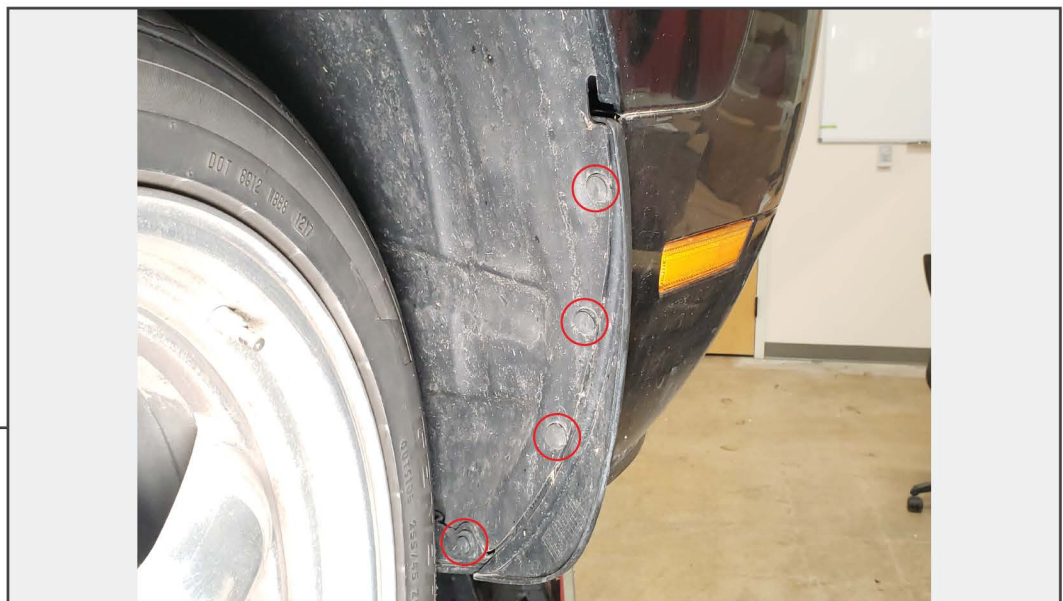


Using a trim panel removal tool, remove the (6) plastic push clips securing the top of the bumper cover to the radiator support.



STEP 3

Locate and remove the (2) 10mm nuts securing the top of the bumper to the fenders, (1) on each side.



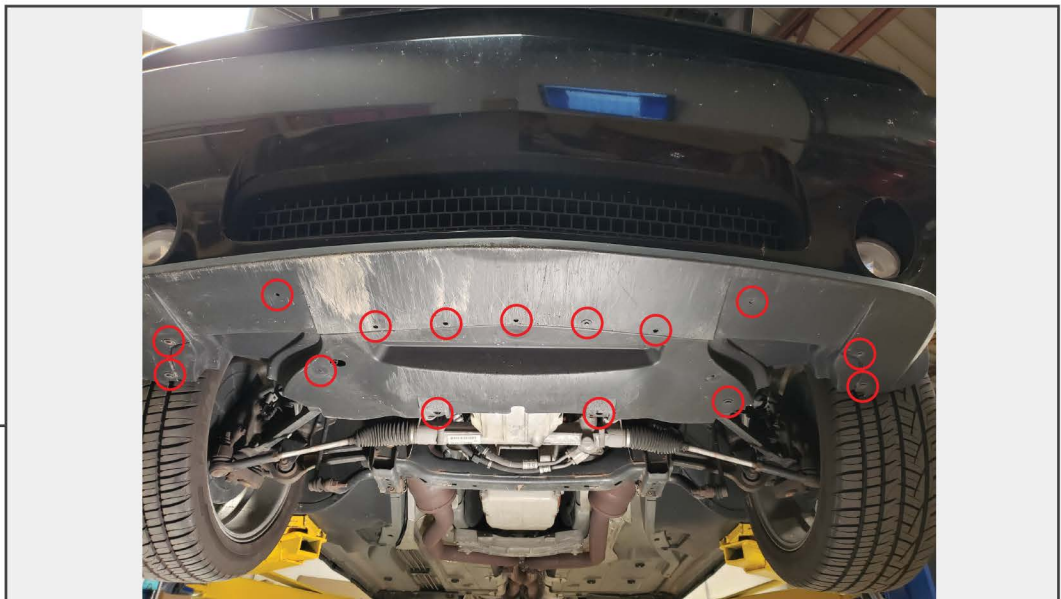
STEP 4

On each side of the bumper, remove the (4) plastic clips securing the fender liner to the bumper.



STEP 5

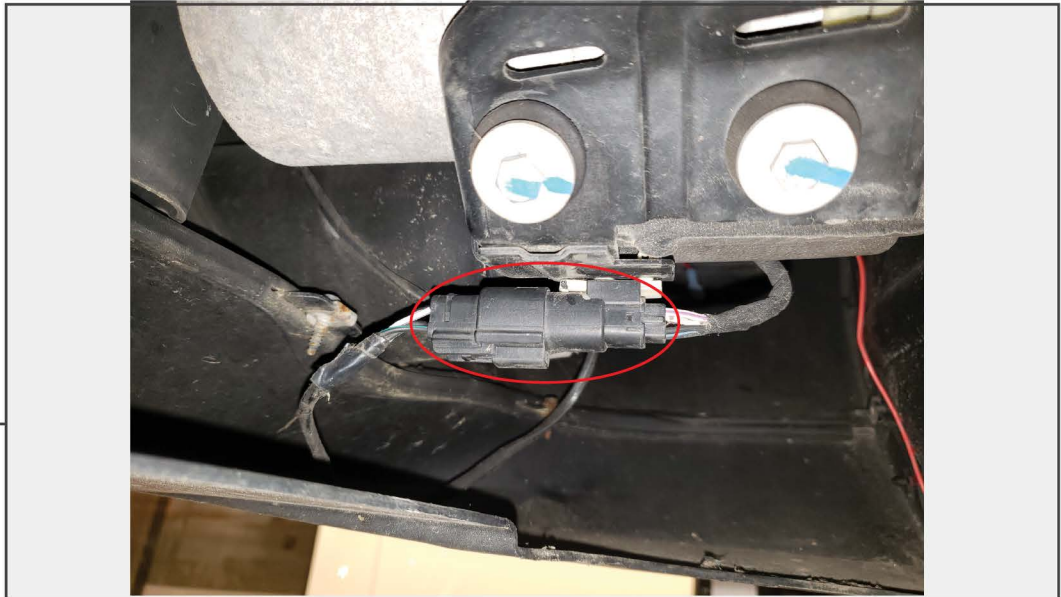
Fold back the fender liner and remove the (1) 10mm bolt and (1) 10mm nut securing the bumper cover to the fender.



STEP 6

Using a trim panel removal tool and a 7mm socket, remove the various fasteners securing the splash shield to the vehicle. **Note: there are several versions of this splash shield but they are fastened to the vehicle in a similar fashion.

STEP 7



With a helper, locate and remove the fog light wiring connection. Disconnect this plug and then carefully remove the bumper from the vehicle.

STEP 8



Using a 10mm socket, remove the (3) bolts securing the headlight to the vehicle.

STEP 9



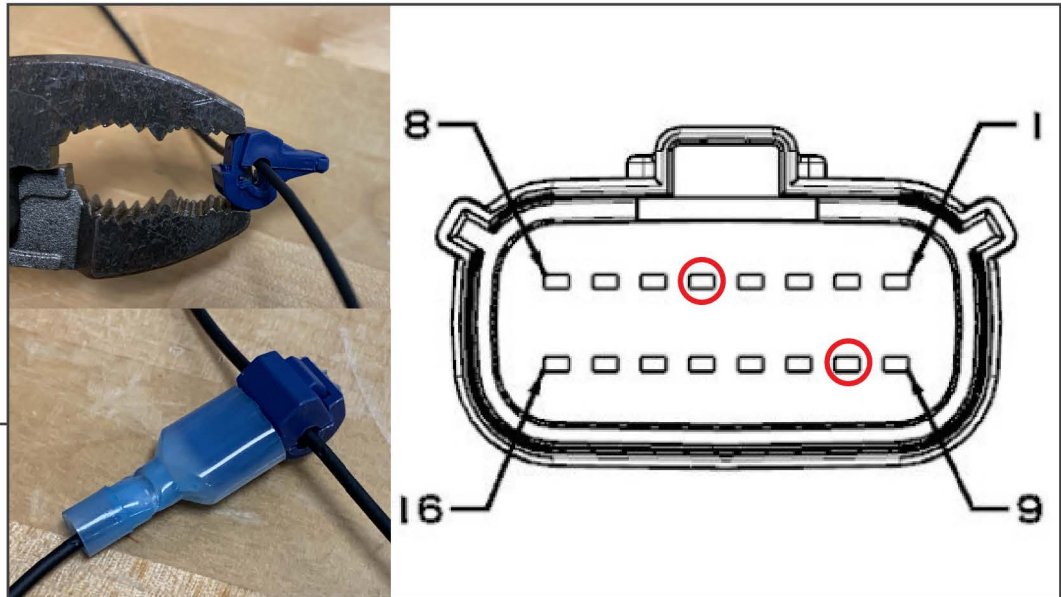
Remove the headlight plug. It is clipped in with (3) tabs, use pressure on the back of the plug to press it out of the light.

STEP 10



Install the light insert into the headlight. Secure it to the headlight using (3) Phillips screws into the factory light bosses.

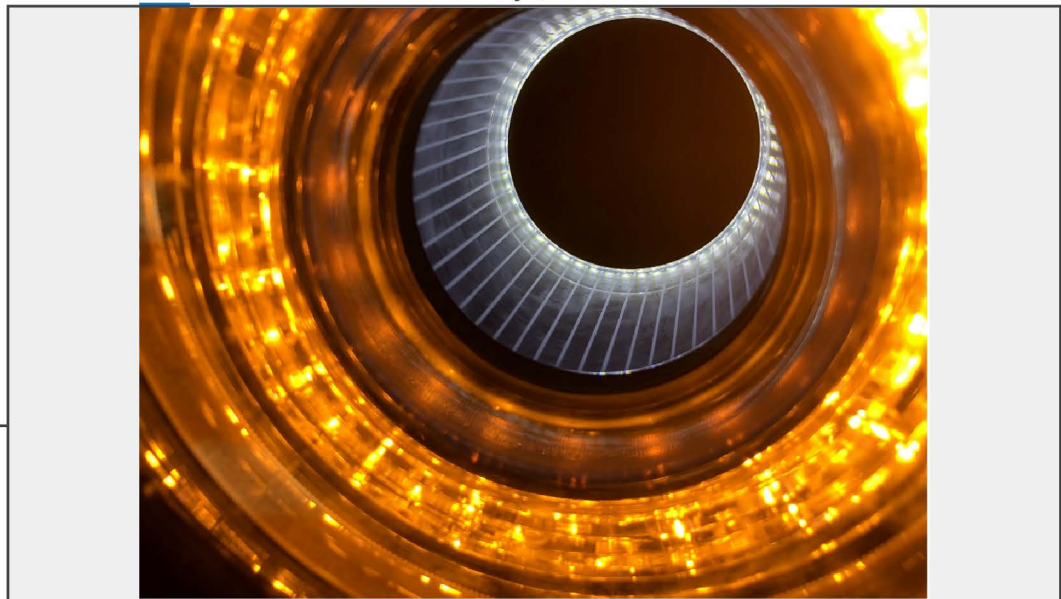
STEP 11



Wiring Instructions: Wire the headlight insert into the factory headlight plug using the supplied scotchlok and male spade connectors. Using pliers, squeeze the scotchlok connector onto the factory wiring. Crimp the male spade connector onto the headlight insert wiring. Then, insert the spade connector into the scotchlok connector. **Note the photo is looking into the plug. The wires will be coming out the opposite side.

Headlight Insert Wiring Color	-	Factory Headlight Plug Color
Black (Ground)	-	Black (Pin Position 10)
Red (Positive)	-	White/Gray (Pin Position 5)

STEP 12



Test the light for functionality. Then reinstall the headlights and bumper following Steps 1-8 in reverse order. Installation is now complete.